

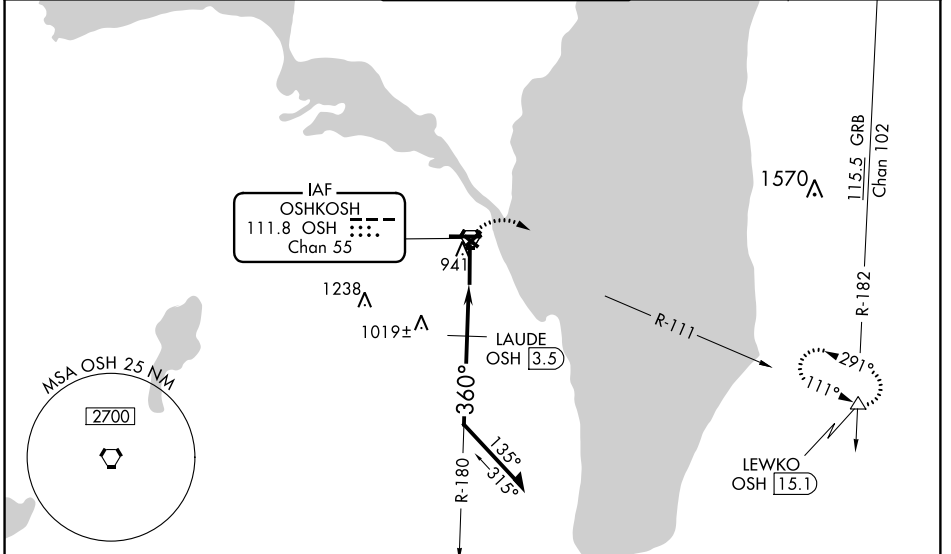
VORTAC OSH 111.8 Chan 55	APP CRS 360°	Rwy Idg TDZE Apt Elev	8002 808 808
----------------------------------------------	------------------------	-----------------------------	-----------------------------------------

VOR RWY 36

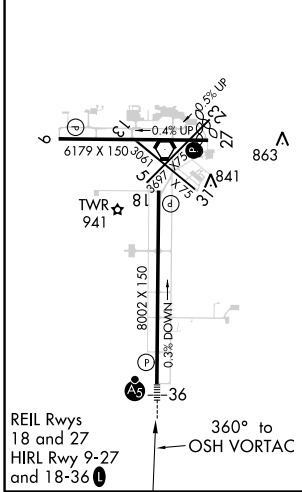
WITTMAN RGNL (OSH)

<p>⚠ Circling to Rwy 5, 23, and 31 NA at night. When local altimeter setting not received, use Fond Du Lac altimeter setting and increase all MDA 40 feet; increase Circling Cat C/D visibility and, Circling Cat C visibility 1/2 mile, increase Circling Cat D visibility 1/4 mile, LAUDE fix minimums increase S-36 Cats C/D visibility to RVR 5500 and Circling Cat D visibility to 2 1/4 mile. For inop MALSRL, when using Fond Du Lac altimeter setting, increase LAUDE fix minimums S-36 Cats C/D visibility to 1 1/2 mile. VDP NA with Fond Du Lac altimeter setting.</p>	<p>MALSRL</p>	<p>MISSED APPROACH: Climbing right turn to 3000 on OSH VORTAC R-111 to LEWKO INT/ OSH 15.1 DME and hold.</p>

ATIS 125.9	MILWAUKEE APP CON 127.0 263.075	OSHKOSH TOWER ★ 118.5 (CTAF) 290.9	GND CON 132.3	UNICOM 122.95
----------------------	-------------------------------------------	----------------------------------------------	-------------------------	-------------------------



ELEV 808	TDZE 808
----------	----------



	3000	LEWKO	OSHKOSH VORTAC	6000	180°	LAUDE OSH 3.5	2300	Remain within 10 NM
			*1500 when using Fond Du Lac altimeter setting.		2.97° TCH 52	OSHKOSH 2.9	*1460	
CATEGORY	A	B	C	D				
S-36	1460/24	652 (700-1/2)	1460-1 3/8	652 (700-1 3/8)				
C CIRCLING	1460-1	652 (700-1)	1460-1 7/8	652 (700-1 7/8)	1460-2	652 (700-2)		
LAUDE FIX MINIMUMS								
S-36	1280/24	472 (500-1/2)	1280/50	472 (500-1)				
C CIRCLING	1280-1	472 (500-1)	1300-1	492 (500-1)	1360-1 1/2	552 (600-1 1/2)		
					1440-2	632 (700-2)		

EC-3, 24 MAY 2018 to 21 JUN 2018

EC-3, 24 MAY 2018 to 21 JUN 2018