

|  |                        |                             |   |
|--|------------------------|-----------------------------|---|
| WAAS<br>CH <b>90429</b><br><b>W23A</b> | APP CRS<br><b>233°</b> | Rwy Idg<br>TDZE<br>Apt Elev | <b>5801</b><br><b>650</b><br><b>650</b> |
|--|------------------------|-----------------------------|---|

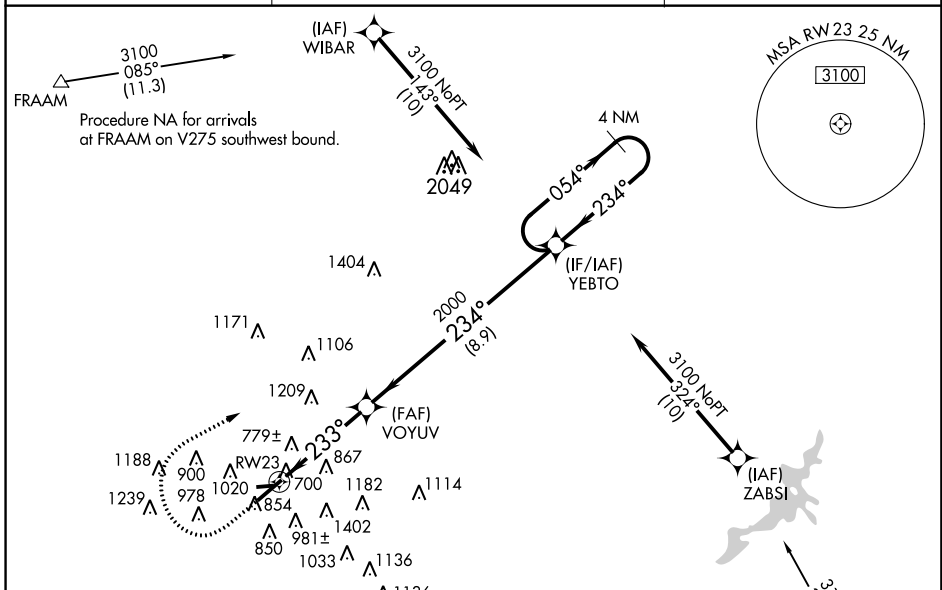
# RNAV (GPS) RWY 23

MIDDLETOWN RGNL/HOOK FIELD (MWO)

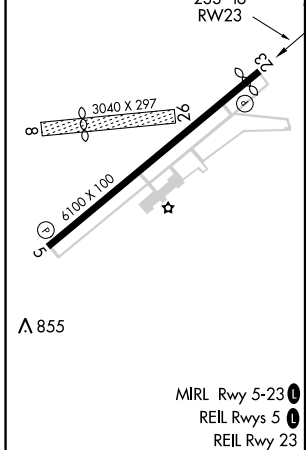
**⚠** Baro-VNAV NA when using Dayton-Wright Brothers altimeter setting. For uncompensated Baro-VNAV systems, LNAV/VNAV NA below -16°C (4°F) or above 40°C (104°F). DME/DME RNP-0.3 NA. When local altimeter setting not received, use Dayton-Wright Brothers altimeter setting; increase all DA 63 ft and all MDA 80 ft; increase LPV visibility all Cats ¼ mile, LNAV/VNAV visibility all Cats ¼ mile, LNAV visibility Cats C and D ¼ mile, and Circling visibility Cat C ¼ mile. Circling NA to Rwy 8 and 26. Rwy 23 helicopter visibility reduction below ¾ SM NA. Circling Rwy 5 NA at night.

**MISSED APPROACH:** Climb to 1800 then climbing right turn to 3100 direct YEBTO and hold.

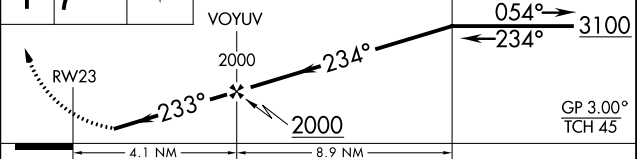
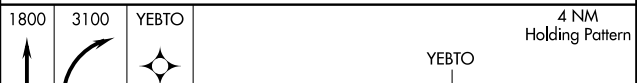
|                          |   |                                 |
|--------------------------|---|---------------------------------|
| AWOS-3<br><b>120.025</b> | COLUMBUS APP CON<br><b>118.85 269.275</b> | UNICOM<br><b>123.0 (CTAF) 0</b> |
|--------------------------|---|---------------------------------|



|          |          |
|----------|----------|
| ELEV 650 | TDZE 650 |
|----------|----------|



Procedure NA for arrivals at PRUDE on T217 southbound and on V5 southwest bound.



| CATEGORY     | A      | B           | C                     | D                       |
|--------------|--------|-------------|-----------------------|-------------------------|
| LPV DA       |        | 986-1 1/8   | 336 (400-1 1/8)       |                         |
| LNAV/VNAV DA |        | 1083-1 1/2  | 433 (500-1 1/2)       |                         |
| LNAV MDA     | 1140-1 | 490 (500-1) | 1140-1 3/8            | 490 (500-1 3/8)         |
| CIRCLING     | 1380-1 | 730 (800-1) | 1380-2<br>730 (800-2) | 1840-3<br>1190 (1200-3) |

EC-2, 24 MAY 2018 to 21 JUN 2018

EC-2, 24 MAY 2018 to 21 JUN 2018