

NDB MW <b>223</b>	APP CRS <b>234°</b>	Rwy Idg TDZE Apt Elev	<b>5801</b> <b>650</b> <b>650</b>
----------------------	------------------------	-----------------------------	---

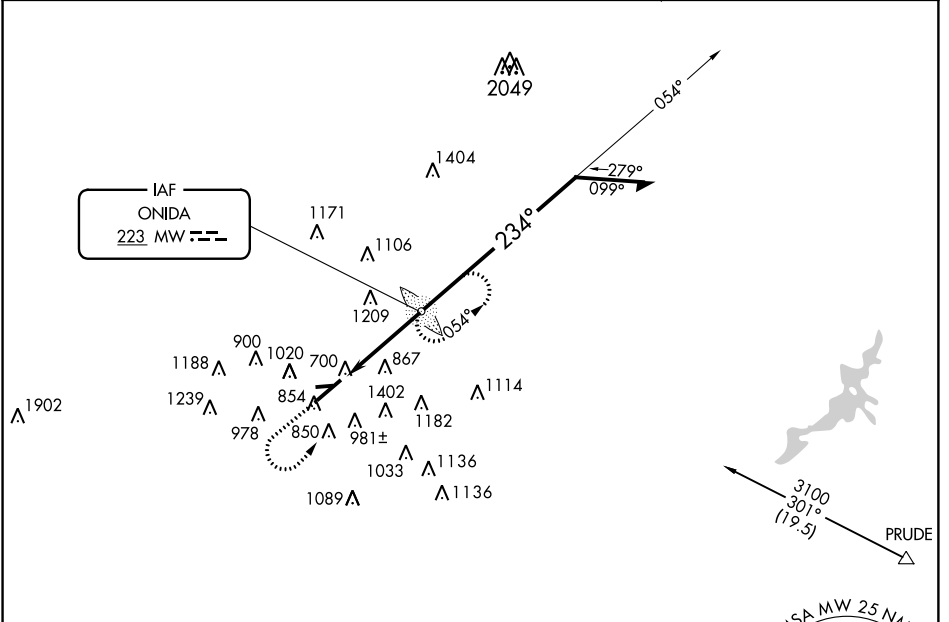
# NDB RWY 23

MIDDLETOWN RGNL/HOOK FIELD (MWO)

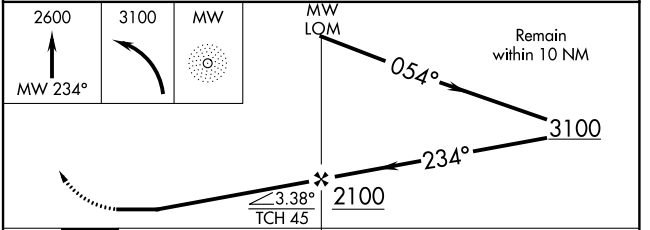
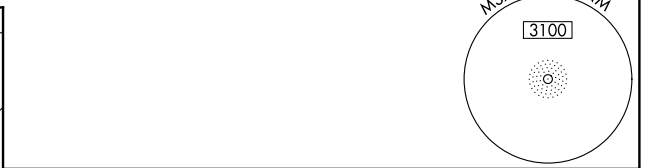
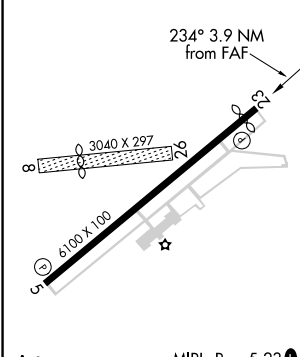
**NA** When local altimeter setting not received, use Dayton-Wright Brothers altimeter setting; increase all MDA 80 ft; increase S-23 visibility Cat B ¼ mile, Cats C and D visibility ½ mile, and Circling Cats B and C visibility ¼ mile. Circling NA to Rwy 8 and 26. Rwy 23 helicopter visibility reduction below ¾ SM NA. Circling Rwy 5 NA at night.

MISSED APPROACH: Climb to 2600 on 234° bearing from ONIDA LOM then climbing left turn to 3100 direct ONIDA LOM and hold.

AWOS-3 <b>120.025</b>	COLUMBUS APP CON <b>118.85 269.275</b>	UNICOM <b>123.0 (CTAF) 0</b>
--------------------------	---	---------------------------------



ELEV 650	TDZE 650
----------	----------



CATEGORY	A	B	C	D
S-23	1320-1	670 (800-1)	1320-1 $\frac{7}{8}$	670 (800-1 $\frac{7}{8}$ )
CIRCLING	1380-1	730 (800-1)	1380-2	1840-3 1190 (1200-3)

FAF to MAP 3.9 NM					
Knots	60	90	120	150	180
Min:Sec	3:54	2:36	1:57	1:34	1:18

MIDDLETOWN, OHIO  
Amdt 9B 10NOV16

39°32'N-84°24'W

MIDDLETOWN RGNL/HOOK FIELD (MWO)

# NDB RWY 23

EC-2, 24 MAY 2018 to 21 JUN 2018

EC-2, 24 MAY 2018 to 21 JUN 2018