

VOR/DME STS <b>113.0</b> Chan 77	APP CRS <b>146°</b>	Rwy Idg TDZE <b>122</b> Apt Elev <b>129</b>	<b>5880</b>
--	------------------------	---	-------------

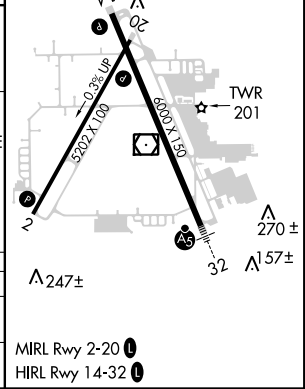
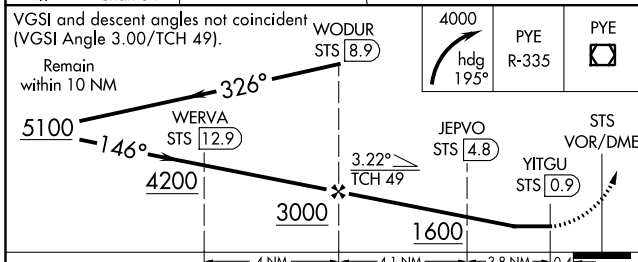
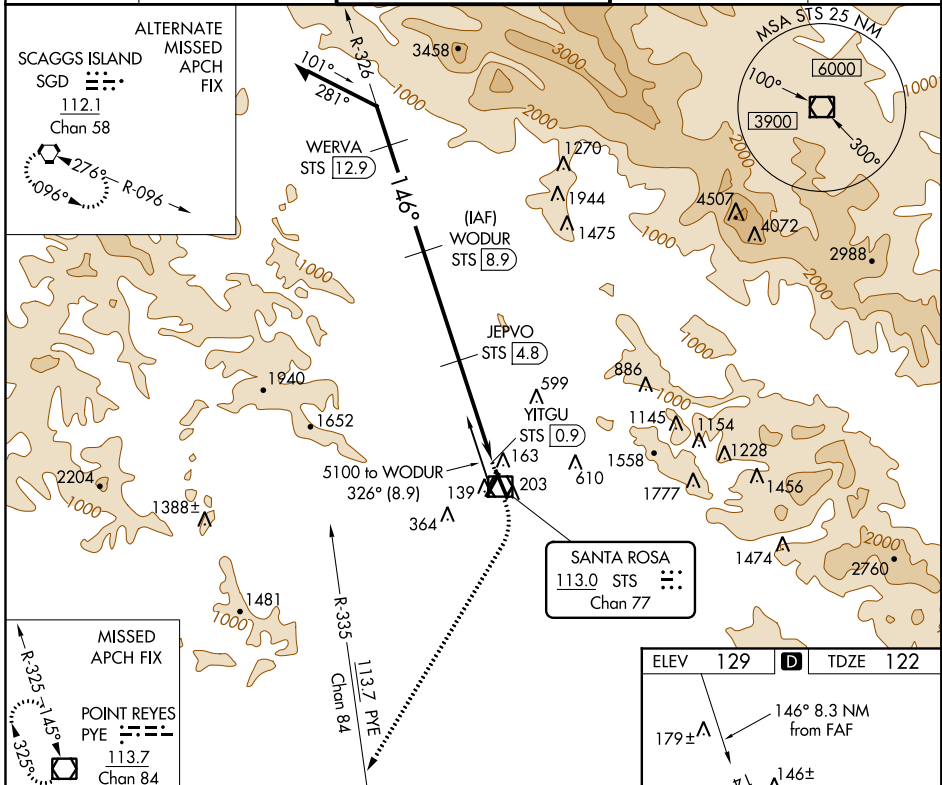
# VOR/DME RWY 14

CHARLES M SCHULZ-SONOMA COUNTY (STS)

**⚠** Helicopter visibility reduction below ¼ SM NA.  
**⚠** When local altimeter setting not received, use Petaluma altimeter setting and increase all MDA 60 feet, and increase S-14 Cats C and D visibility ½ mile. Increase Circling Cat A visibility ¼ mile.

MISSED APPROACH: Climbing right turn to 4000 on heading 195° and on PYE VOR/DME R-335 to PYE VOR/DME and hold.

ATIS <b>120.55</b>	OAKLAND CENTER <b>127.8 353.5</b>	SANTA ROSA TOWER ★ <b>118.5 (CTAF) 363.0</b>	GND CON <b>121.9</b>	UNICOM <b>122.95</b>
-----------------------	--------------------------------------	---	-------------------------	-------------------------



CATEGORY	A	B	C	D
S-14	880-1 758 (800-1)	880-1¼ 758 (800-1¼)	880-2½ 758 (800-2½)	
<b>C</b> CIRCLING	880-1 751 (800-1)	880-1¼ 751 (800-1¼)	1080-3 951 (1000-3)	1420-3 1291 (1300-3)