

WAAS CH 72611 W32A	APP CRS 321°	Rwy Idg 6000 TDZE 122 Apt Elev 129
----------------------------------------	------------------------	---------------------------------------------------------------

RNAV (GPS) RWY 32

CHARLES M SCHULZ-SONOMA COUNTY (STS)

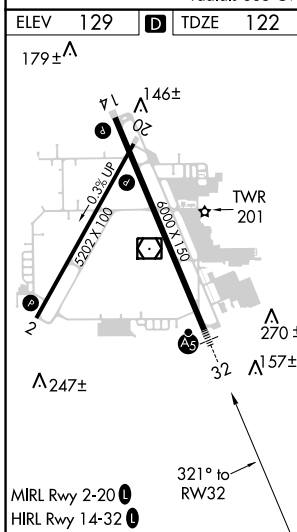
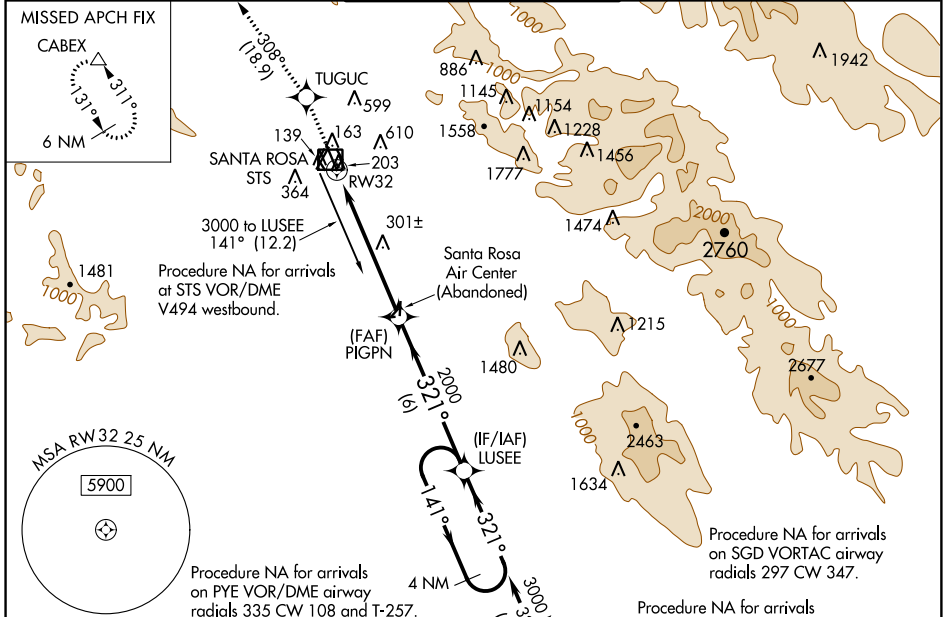
RNP APCH.

For uncompensated Baro-VNAV systems, LNAV/VNAV NA below -4°C (25°F) or above 54°C (130°F).
 Circling Rwy 14, 20 NA at night.
 # RVR 1800 authorized with use of FD or AP or HUD to DA.

MALS

MISSED APPROACH: Climb to 6000 direct TUGUC and on track 308° to CABEX and hold, continue climb-in-hold to 6000.

ATIS 120.55	OAKLAND CENTER 127.8 353.5	SANTA ROSA TOWER* 118.5 (CTAF) 0 363.0	GND CON 121.9	UNICOM 122.95
-----------------------	--------------------------------------	--------------------------------------------------	-------------------------	-------------------------



6000 ↑	TUGUC ↑	tr 308°	CABEX △	LUSEE 4 NM Holding Pattern
				141° → 3000 ← 321°
* LNAV only.				GP 3.00° TCH 53
* 1.2 NM to RW32				
PIGPN 2000				
1.2 4.5 NM 6 NM				
CATEGORY	A	B	C	D
LPV DA #		322/24	200 (200-½)	
LNAV/VNAV DA		570/50	448 (500-1)	
LNAV MDA	560/24	438 (500-½)	560/40	438 (500-¾)
CIRCLING	600-1 471 (500-1)	680-1 551 (600-1)	1080-3 951 (1000-3)	1420-3 1291 (1300-3)

SW-2, 24 MAY 2018 to 21 JUN 2018

SW-2, 24 MAY 2018 to 21 JUN 2018