

WAAS CH 69230 W02A	APP CRS 013°	Rwy Idg TDZE Apt Elev	4802 129 129
--	------------------------	-----------------------------	---

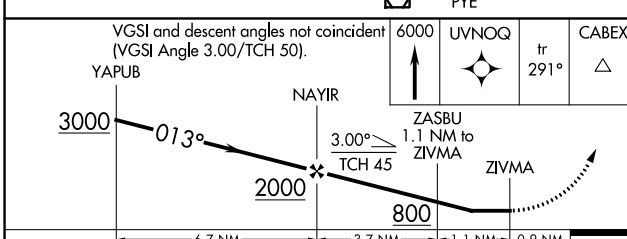
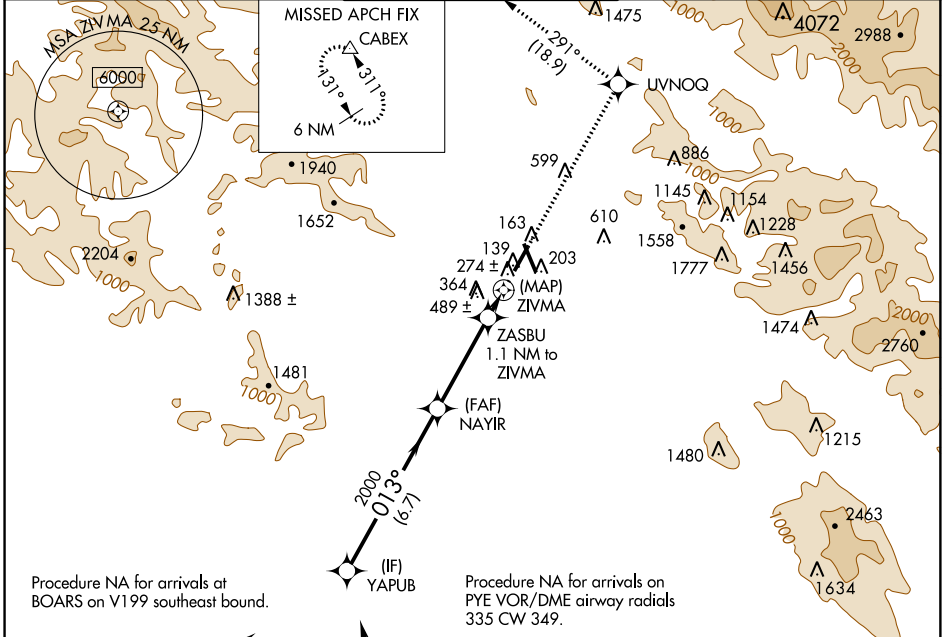
RNAV (GPS) RWY 2

CHARLES M SCHULZ-SONOMA COUNTY (STS)

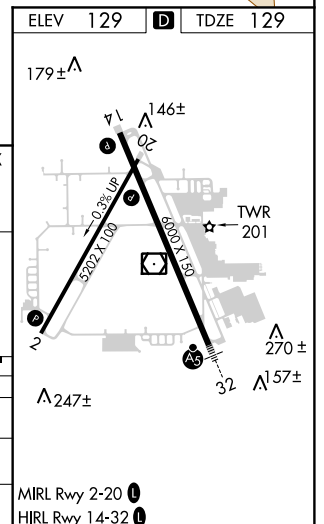
⚠ DME/DME RNP-0.3 NA. When local altimeter setting not received, use Petaluma altimeter setting and increase all MDA 60 feet and visibility LP and LNAV Cats C and D ¼ mile. Rwy 2 helicopter visibility reduction below ¾ SM NA.

⚠ MISSED APPROACH: Climb to 6000 direct UVNOQ and on track 291° to CABEX and hold, continue climb-in-hold to 6000.

ATIS 120.55	OAKLAND CENTER 127.8 353.5	SANTA ROSA TOWER* 118.5 (CTAF) 0 363.0	GND CON 121.9	UNICOM 122.95
-----------------------	--------------------------------------	--	-------------------------	-------------------------



CATEGORY	A	B	C	D
LP MDA	500-1 371 (400-1)			
LNAV MDA	660-1	531 (600-1)	660-1½	531 (600-1½)
C CIRCLING	660-1 531 (600-1)	680-1 551 (600-1)	1080-3 951 (1000-3)	1420-3 1291 (1300-3)



SW-2, 24 MAY 2018 to 21 JUN 2018

SW-2, 24 MAY 2018 to 21 JUN 2018

RNAV (GPS) RWY 2