

(SILCN.SILCN4) 17173

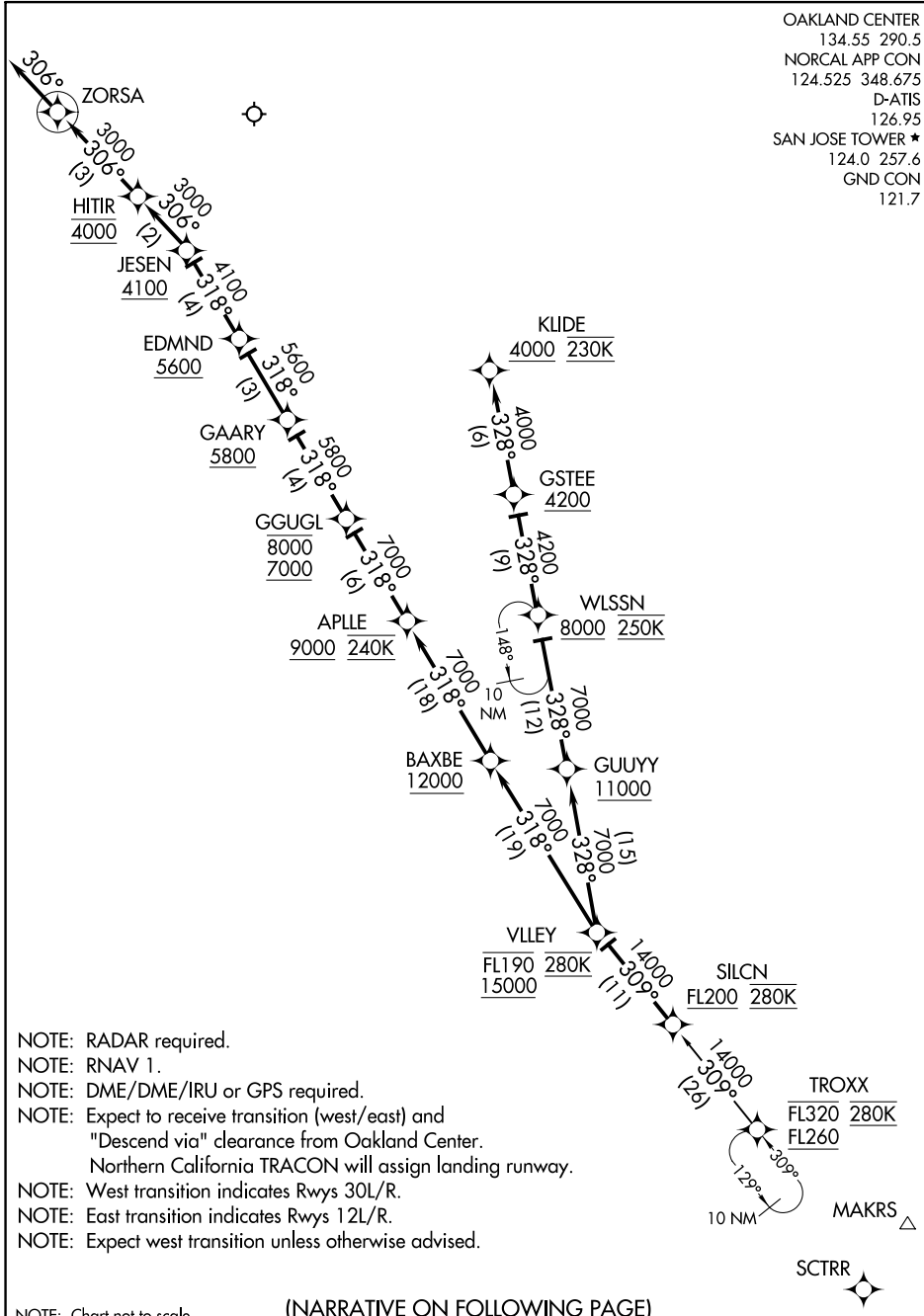
# SILCN FOUR ARRIVAL (RNAV)

AL-693 (FAA)

NORMAN Y MINETA SAN JOSE INTL (SJC)

SAN JOSE, CALIFORNIA

OAKLAND CENTER  
 134.55 290.5  
 NORCAL APP CON  
 124.525 348.675  
 D-ATIS  
 126.95  
 SAN JOSE TOWER \*  
 124.0 257.6  
 GND CON  
 121.7



- NOTE: RADAR required.
- NOTE: RNAV 1.
- NOTE: DME/DME/IRU or GPS required.
- NOTE: Expect to receive transition (west/east) and "Descend via" clearance from Oakland Center.
- NOTE: Northern California TRACON will assign landing runway.
- NOTE: West transition indicates Rwy 30L/R.
- NOTE: East transition indicates Rwy 12L/R.
- NOTE: Expect west transition unless otherwise advised.

NOTE: Chart not to scale.

(NARRATIVE ON FOLLOWING PAGE)

# SILCN FOUR ARRIVAL (RNAV)

(SILCN.SILCN4) 21JUL16

SAN JOSE, CALIFORNIA

NORMAN Y MINETA SAN JOSE INTL (SJC)

SW-2, 24 MAY 2018 to 21 JUN 2018

SW-2, 24 MAY 2018 to 21 JUN 2018