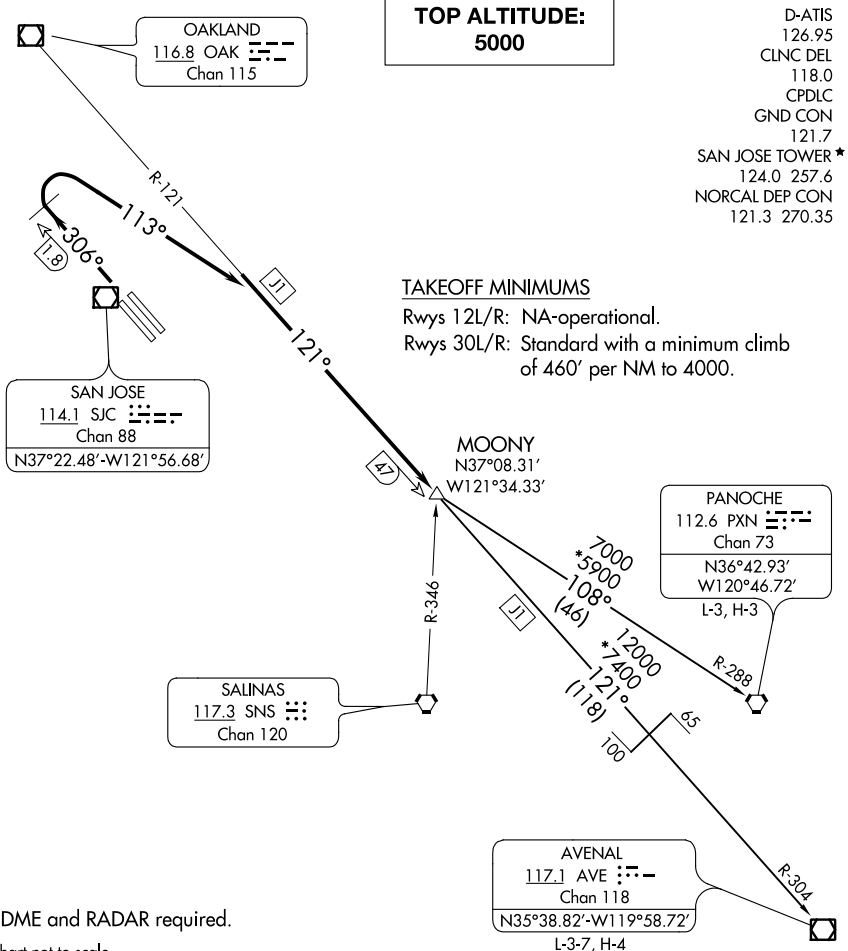


(SJC2.MOONY) 17341

SAN JOSE TWO DEPARTURE

AL-693 (FAA)

NORMAN Y MINETA SAN JOSE INTL (SJC)
SAN JOSE, CALIFORNIA



D-ATIS
126.95
CLNC DEL
118.0
CPDLC
GND CON
121.7
SAN JOSE TOWER*
124.0 257.6
NORCAL DEP CON
121.3 270.35

TAKEOFF MINIMUMS
Rwys 12L/R: NA-operational.
Rwys 30L/R: Standard with a minimum climb
of 460' per NM to 4000.

SW-2, 24 MAY 2018 to 21 JUN 2018

SW-2, 24 MAY 2018 to 21 JUN 2018

NOTE: DME and RADAR required.
NOTE: Chart not to scale.

DEPARTURE ROUTE DESCRIPTION

TAKEOFF RUNWAYS 12L/R: NA.

TAKEOFF RUNWAYS 30L/R: Climb heading 306° to SJC 1.8 DME NW of SJC VOR/DME, then turn right heading 113° to intercept and proceed on OAK R-121 to MOONY INT, thence. . . .

. . . on (transition) or (assigned route). Maintain 5000, expect clearance with filed altitude ten minutes after departure.

AVENAL TRANSITION (SJC2.AVE): From over MOONY INT on OAK R-121 and AVE R-304 to AVE VOR/DME.

PANOCHÉ TRANSITION (SJC2.PXN): From over MOONY INT on PXN R-288 to PXN VORTAC.

SAN JOSE TWO DEPARTURE
(SJC2.MOONY) 21JUL16

SAN JOSE, CALIFORNIA
NORMAN Y MINETA SAN JOSE INTL (SJC)