

APP CRS	Rwy Idg	<b>7597</b>
<b>306°</b>	TDZE	<b>55</b>
	Apt Elev	<b>62</b>

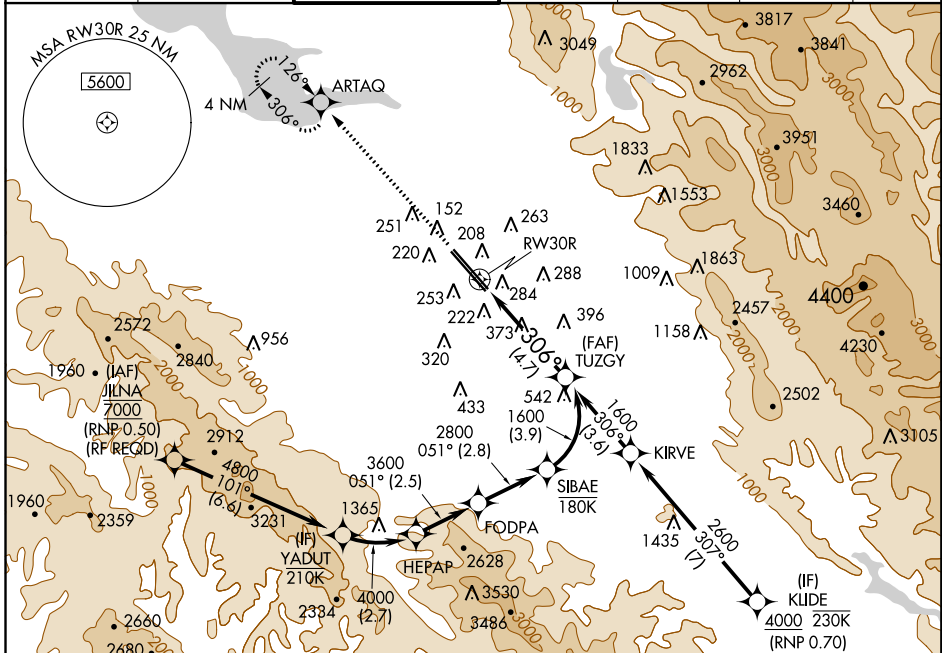
# RNAV (RNP) Z RWY 30R

NORMAN Y MINETA SAN JOSE INTL (SJC)

**▽** For uncompensated Baro-VNAV systems, procedure NA below -1°C (31°F) or above 54°C (130°F). GPS required.

MISSED APPROACH: Climb to 600 then climb to 2300 direct ARTAQ and hold.

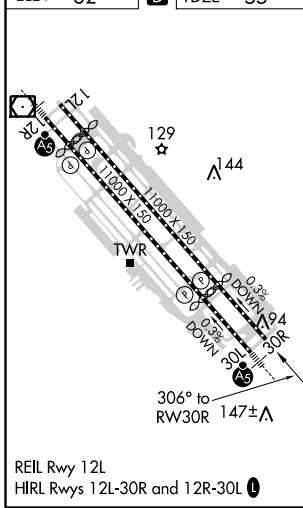
D-ATIS	NORCAL APP CON	SAN JOSE TOWER ★	GND CON	CLNC DEL	CPDLC	UNICOM
<b>126.95</b>	<b>120.1 290.25</b>	<b>124.0 (CTAF) 1 257.6</b>	<b>121.7</b>	<b>118.0</b>		<b>122.95</b>



SW-2, 24 MAY 2018 to 21 JUN 2018

SW-2, 24 MAY 2018 to 21 JUN 2018

ELEV	<b>62</b>	<b>D</b>	TDZE	<b>55</b>
------	-----------	----------	------	-----------



600 2300 ARTAQ VGS1 and RNAV glidepath not coincident (VGS1 Angle 3.00/TCH 69). TUZGY 1600

See planview for multiple IF locations.

RWY 30R 306° 1600 GP 3.00° TCH 55

4.7 NM

CATEGORY	A	B	C	D
RNP 0.11 DA		404-1 $\frac{1}{8}$	349 (400-1 $\frac{1}{8}$ )	
RNP 0.20 DA		475-1 $\frac{3}{8}$	420 (500-1 $\frac{3}{8}$ )	
RNP 0.30 DA		541-1 $\frac{5}{8}$	486 (500-1 $\frac{5}{8}$ )	

**AUTHORIZATION REQUIRED**