

(LOUPE4.BMRNG) 17341

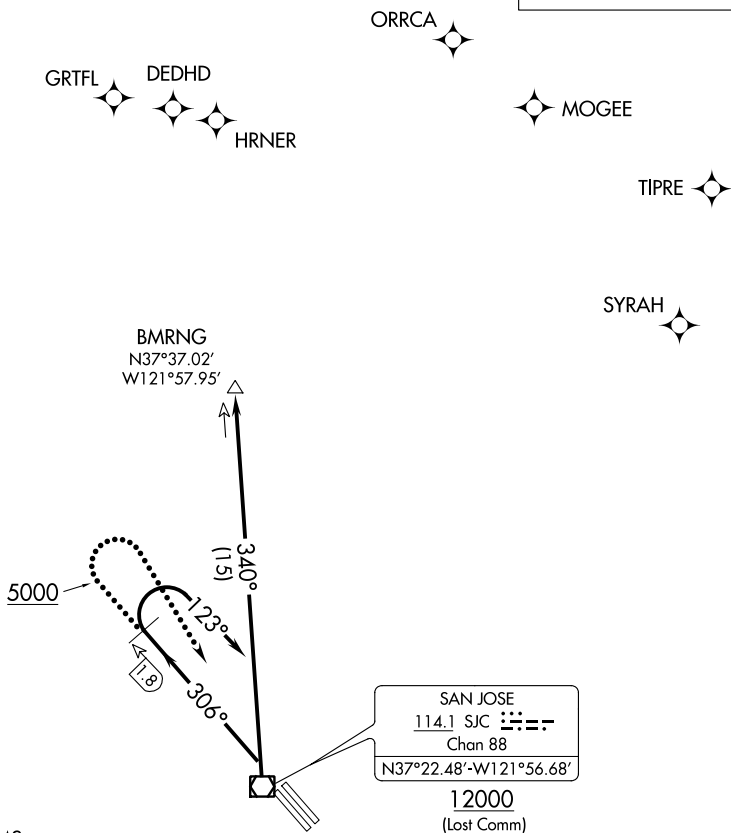
LOUPE FOUR DEPARTURE

AL-693 (FAA)

NORMAN Y MINETA SAN JOSE INTL (SJC)
SAN JOSE, CALIFORNIA

D-ATIS
126.95
CLNC DEL
118.0
CPDLC
GND CON
121.7
SAN JOSE TOWER ★
124.0 257.6
NORCAL DEP CON
121.3 270.35

**TOP ALTITUDE:
5000**



TAKEOFF MINIMUMS

Rwys 12L/R: NA-ATC.

Rwys 30L/R: Standard with a minimum climb of 470' per NM to 5000.

NOTE: RADAR and DME required.

NOTE: Chart not to scale.



DEPARTURE ROUTE DESCRIPTION

TAKEOFF RUNWAYS 30L/R: Climb heading 306°, at SJC VOR/DME 1.8 DME northwest turn right heading 123°. Expect vectors to SJC VOR/DME, then via SJC R-340 to BMRNG INT. Maintain 5000. Expect filed altitude 10 minutes after departure.

LOST COMMUNICATIONS

RUNWAYS 30L/R: If not in contact with departure control after reaching 5000' turn right direct SJC VOR/DME thence via SJC VOR/DME R-340 to BMRNG INT, thence via assigned route. Cross SJC VOR/DME at or above 12000, then climb to filed altitude.

LOUPE FOUR DEPARTURE

(LOUPE4.BMRNG) 21JUL16

SAN JOSE, CALIFORNIA
NORMAN Y MINETA SAN JOSE INTL (SJC)

SW-2, 24 MAY 2018 to 21 JUN 2018

SW-2, 24 MAY 2018 to 21 JUN 2018