

# EL NIDO FIVE ARRIVAL

AL-693 (FAA)

NORCAL APP CON  
126.475 317.775  
D-ATIS  
126.95

NOTE: Chart not to scale.

SW-2, 24 MAY 2018 to 21 JUN 2018

SW-2, 24 MAY 2018 to 21 JUN 2018

**ARRIVAL ROUTE DESCRIPTION**

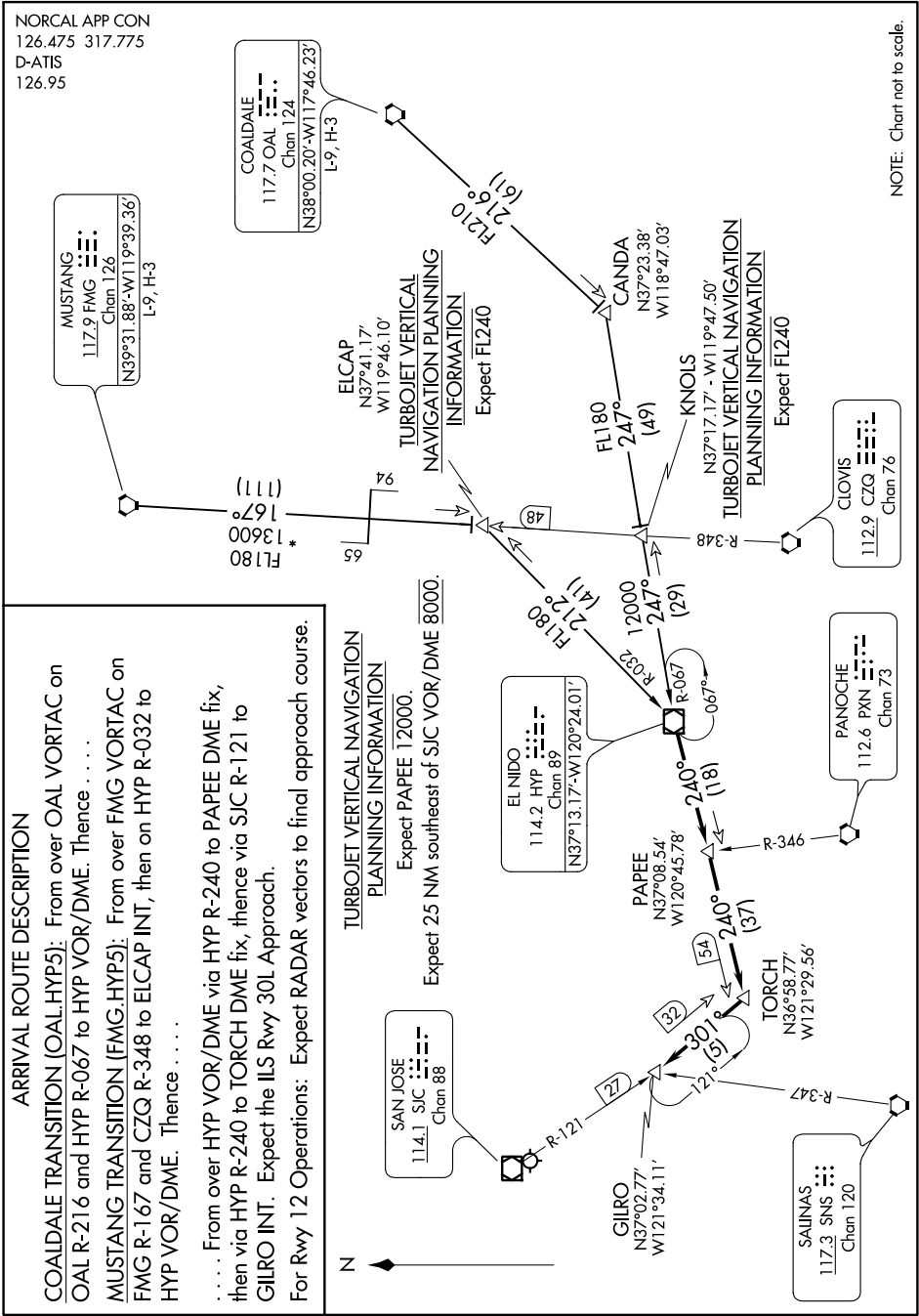
**COALDALE TRANSITION (OAL.HYP5):** From over OAL VORTAC on OAL R-216 and HYP R-067 to HYP VOR/DME. Thence . . . .

**MUSTANG TRANSITION (FMG.HYP5):** From over FMG VORTAC on FMG R-167 and CZQ R-348 to ELCAP INT, then on HYP R-032 to HYP VOR/DME. Thence. . . . .

. . . . . From over HYP VOR/DME via HYP R-240 to PAPEE DME fix, then via HYP R-240 to TORCH DME fix, thence via SJC R-121 to GILRO INT. Expect the ILS Rwy 30L Approach.

For Rwy 12 Operations: Expect RADAR vectors to final approach course.

**TURBOJET VERTICAL NAVIGATION PLANNING INFORMATION**  
Expect PAPEE 12000.  
Expect 25 NM southeast of SJC VOR/DME 8000.



# EL NIDO FIVE ARRIVAL