

VORTAC PIE 116.4 Chan 111	APP CRS 164°	Rwy Idg Rwy Idg (night only) TDZE Apt Elev	2864 2825 6 7
---	------------------------	---	--

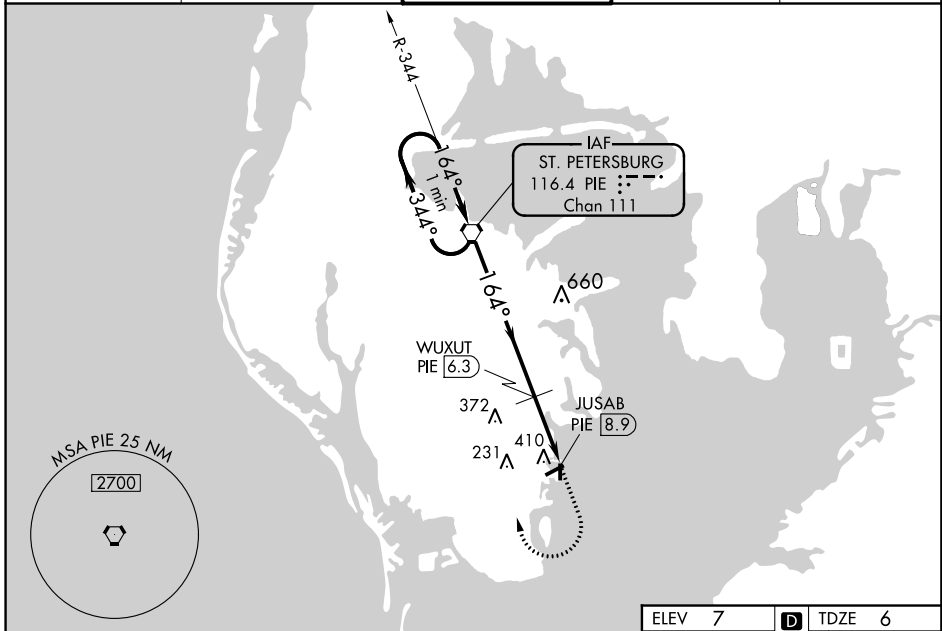
VOR RWY 18

ALBERT WHITTED (SPG)

▽ VDP NA with Tampa Intl altimeter setting. Night landing: Rwy 36 NA. When local altimeter setting not received, use Tampa Intl altimeter setting and increase all MDA 40 feet. Helicopter visibility reduction below $\frac{3}{4}$ SM NA.

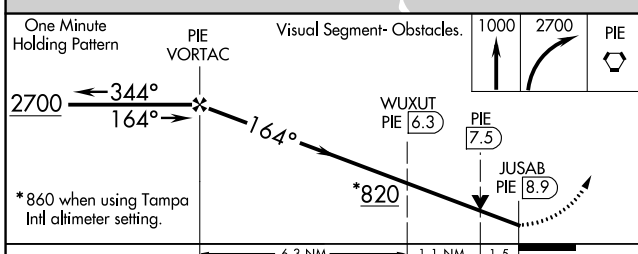
▲ MISSED APPROACH: Climb to 1000 then climbing right turn to 2700 direct PIE VORTAC and hold.

ASOS 118.875	TAMPA APP CON 119.65 316.05 (EAST) 125.3 316.05 (WEST)	ALBERT WHITTED TOWER * 127.4 (CTAF) 0 257.6	GND CON 121.8	UNICOM 122.95
------------------------	--	---	-------------------------	-------------------------

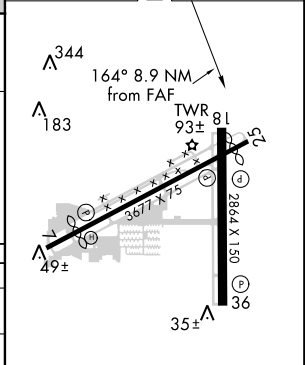


SE-3, 24 MAY 2018 to 21 JUN 2018

SE-3, 24 MAY 2018 to 21 JUN 2018



ELEV 7	D TDZE 6
--------	-----------------



CATEGORY	A	B	C	D
S-18	820-1 814 (900-1)	820-1¼ 814 (900-1¼)		NA
C CIRCLING	820-1¼	813 (900-1¼)		NA
WUXUT FIX MINIMUMS (DME REQUIRED)				
S-18	660-1	654 (700-1)		NA
C CIRCLING	720-1	713 (800-1)		NA

MIRL Rwy 7-25 and 18-36	0
REIL Rwy 7, 18, 25 and 36	0
FAF to MAP 8.9 NM	
Knots	60 90 120 150 180
Min:Sec	8:54 5:56 4:27 3:34 2:58