

ST. PETERSBURG, FLORIDA

AL-613 (FAA)

16259

| | | |
|-------------|----------|-------------|
| APP CRS | Rwy Idg | 2864 |
| 005° | TDZE | 6 |
| | Apt Elev | 7 |

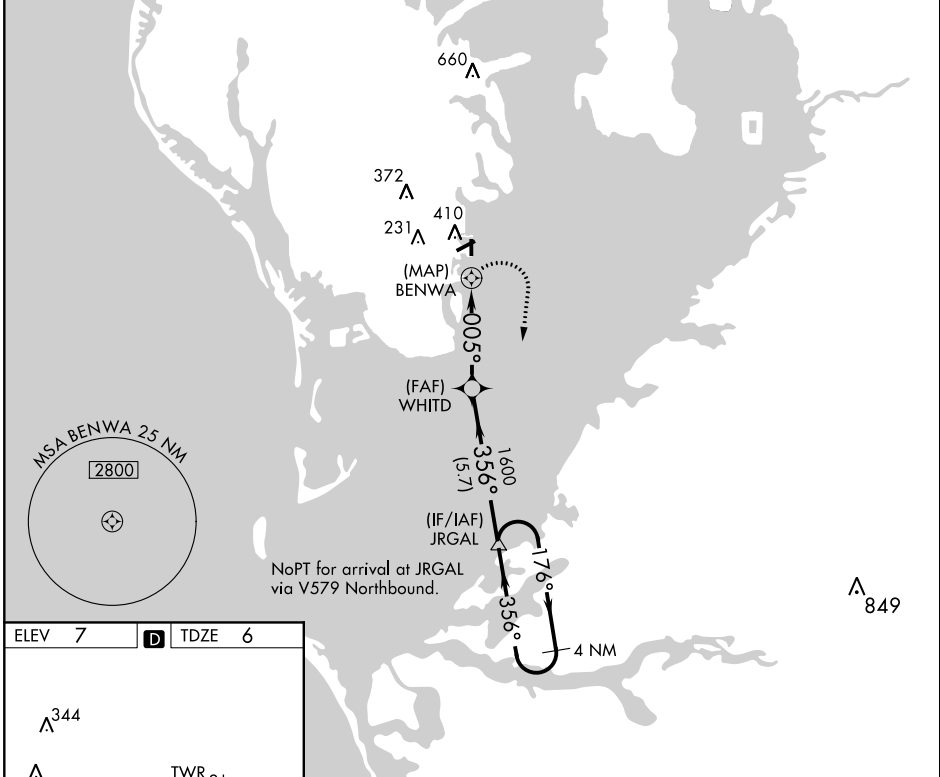
RNAV (GPS) RWY 36

ALBERT WHITTED (SPG)

▼ DME/DME RNP-0.3 NA. Procedure NA at night. Visibility reduction by helicopters NA. When local altimeter setting not received, use Tampa Intl altimeter setting and increase all MDA 40 feet and Circling Cat B visibility 1/4 mile.

▲ MISSED APPROACH: Climbing right turn to 2000 direct JRGAL and hold.

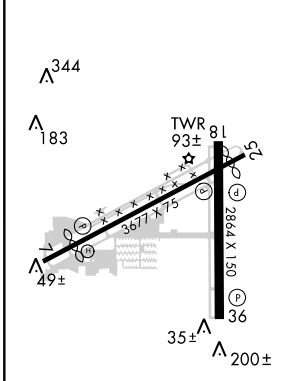
| | | | | |
|------------------------|--|---|-------------------------|-------------------------|
| ASOS 118.875 | TAMPA APP CON 119.65 316.05 (EAST) 125.3 316.05 (WEST) | ALBERT WHITTED TOWER * 127.4 (CTAF) 0 257.6 | GND CON 121.8 | UNICOM 122.95 |
|------------------------|--|---|-------------------------|-------------------------|



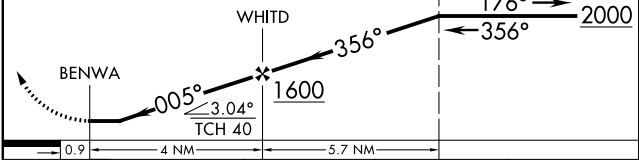
SE-3: 24 MAY 2018 to 21 JUN 2018

SE-3: 24 MAY 2018 to 21 JUN 2018

| | | |
|--------|----------|--------|
| ELEV 7 | D | TDZE 6 |
|--------|----------|--------|



| | | | |
|------|-------|--|----------------------|
| 2000 | JRGAL | VGSI and descent angles not coincident (VGSI Angle 4.00/TCH 40). | 4 NM Holding Pattern |
|------|-------|--|----------------------|



| CATEGORY | A | B | C | D |
|----------|-------|-------------|----|---|
| LNAV MDA | 500-1 | 494 (500-1) | NA | |
| CIRCLING | 720-1 | 713 (800-1) | NA | |

MIRL Rwy 7-25 and 18-36
REIL Rwy 7, 18, 25 and 36

ST. PETERSBURG, FLORIDA

Amdt 1 25SEP08

27°46'N-82°38'W

RNAV (GPS) RWY 36

ALBERT WHITTED (SPG)