

APP CRS 172°	Rwy Idg	2864
	Rwy Idg (night only)	2824
	TDZE	6
	Apt Elev	7

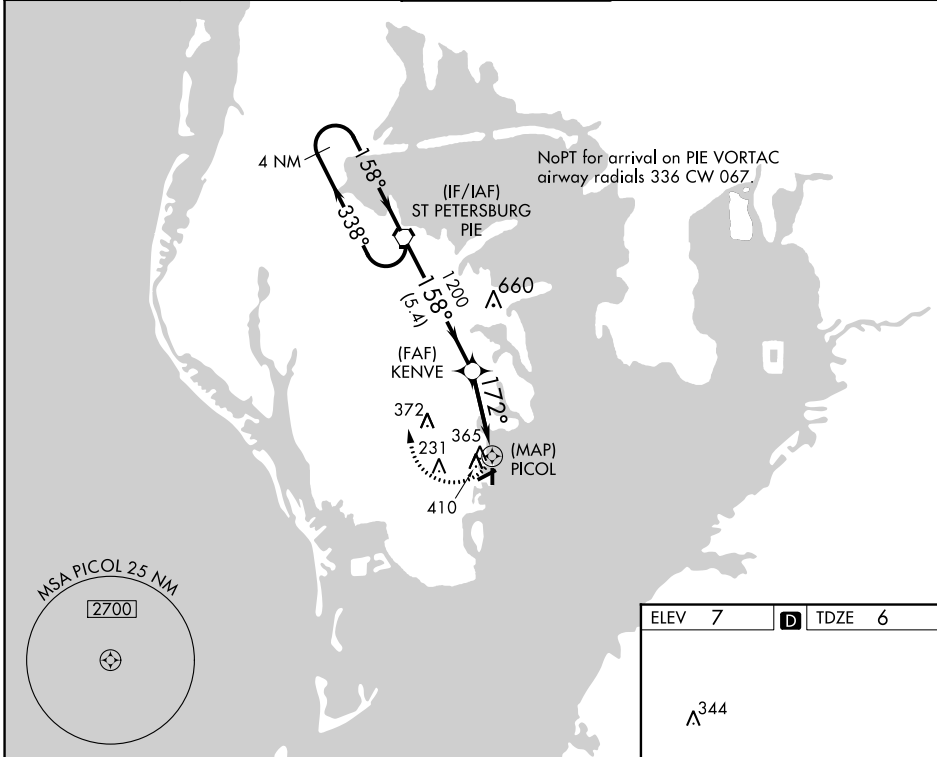
RNAV (GPS) RWY 18

ALBERT WHITTED (SPG)

⚠ DME/DME RNP-0.3 NA. Helicopter visibility reduction below $\frac{3}{4}$ SM NA. When local altimeter setting not received, use Tampa Intl altimeter setting and increase all MDA 40 feet, and Circling Cat B visibility $\frac{1}{4}$ mile. VDP NA with Tampa Intl altimeter setting. Night Landing: Rwy 36 NA.

MISSED APPROACH: Climbing right turn to 2000 direct PIE VORTAC and hold.

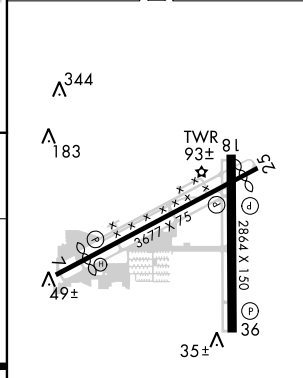
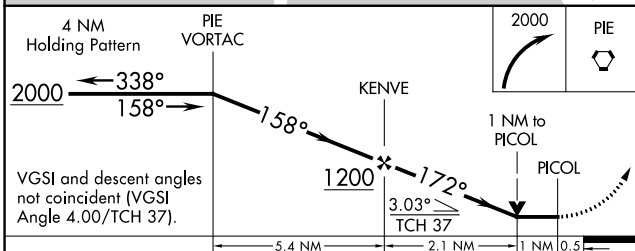
ASOS 118.875	TAMPA APP CON 119.65 316.05 (EAST) 125.3 316.05 (WEST)	ALBERT WHITTED TOWER * 127.4 (CTAF) 0 257.6	GND CON 121.8	UNICOM 122.95
------------------------	--	---	-------------------------	-------------------------



SE-3, 24 MAY 2018 to 21 JUN 2018

SE-3, 24 MAY 2018 to 21 JUN 2018

ELEV 7	D TDZE 6
--------	-----------------



CATEGORY	A	B	C	D
LNNAV MDA	680-1	674 (700-1)		NA
CIRCLING	720-1	713 (800-1)		NA

MIRL Rwy 7-25 and 18-36
REIL Rwy 7, 18, 25 and 36