

SEA ISLE-FIVE DEPARTURE (SIE5•SIE)

SHL-562 [USAF]

DOVER AFB (KDOV)

DOVER, DELAWARE

ATIS 127.825 273.5
 CLNC DEL
 125.55 289.4
 GND CON
 118.875 225.4
 DOVER TOWER
 126.35 279.625
 DOVER DEP CON
 323.0
 WASHINGTON CENTER
 127.7 285.4
 DOVER APP CON
 132.425 257.875
 DOVER RADAR
 125.9 359.3

HAMPTON
 113.6 HTO
 Chan 83
 L-33-34, H-10

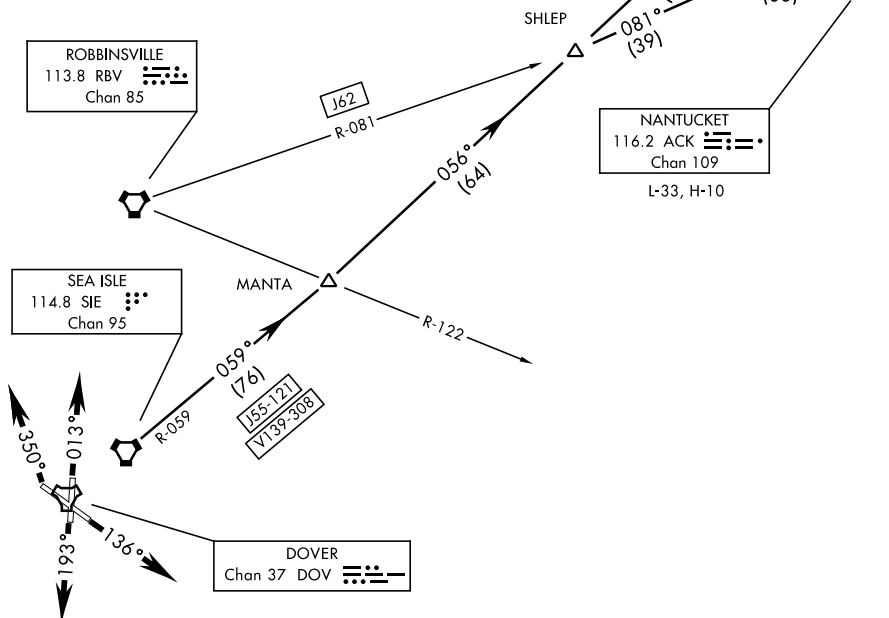
ROBBINSVILLE
 113.8 RBV
 Chan 85

SEA ISLE
 114.8 SIE
 Chan 95

J62-79
 (83)

NANTUCKET
 116.2 ACK
 Chan 109
 L-33, H-10

DOVER
 Chan 37 DOV



RWY 32 TODA 10,070'

NOTE: Chart not to scale

RADAR REQUIRED

DEPARTURE ROUTE DESCRIPTION

TAKE-OFF RWY 1: Climb on a track of 013° for radar vectors to SIE VORTAC. Thence...

TAKE-OFF RWY 14: Climb on a track of 136° for radar vectors to SIE VORTAC. Thence...

TAKE-OFF RWY 19: Climb on a track of 193° for radar vectors to SIE VORTAC. Thence...

TAKE-OFF RWY 32: Climb on a track of 350° for radar vectors to SIE VORTAC. Thence...

Via (Transition) or (Assigned Route).

HAMPTON TRANSITION: (SIE5•HTO) Via SIE R-059 and HTO VORTAC R-236 to HTO.

NANTUCKET TRANSITION: (HIGH ALT ONLY) (SIE5•ACK) Via SIE R-059, HTO VORTAC R-236 and J62 to ACK VOR/DME.

SEA ISLE-FIVE DEPARTURE (SIE5•SIE)

DOVER, DELAWARE
DOVER AFB (KDOV)

NE-3, 24 MAY 2018 to 21 JUN 2018

NE-3, 24 MAY 2018 to 21 JUN 2018