

DOVER, DELAWARE

# RNAV (GPS) RWY 32

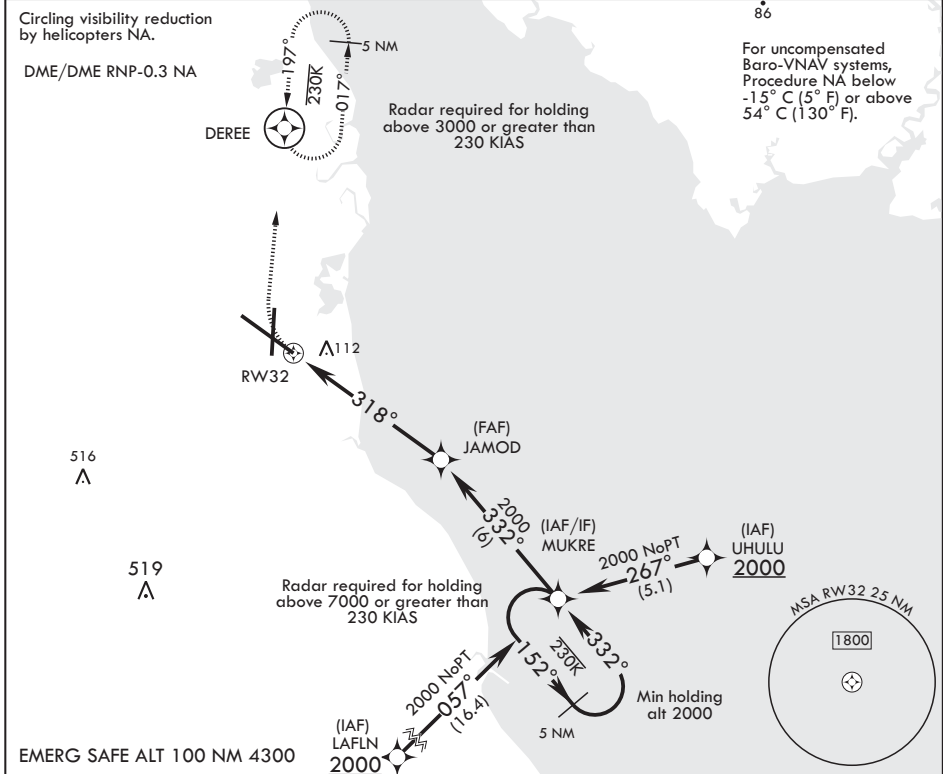
WAAS CH <b>91360</b> W32A	APCH CRS <b>318°</b>	Rwy ldg TDZE <b>26</b> Arprt Elev <b>29</b>
---------------------------------	-------------------------	---

AL-562 (USAF)

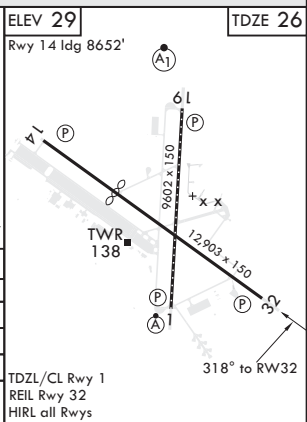
DOVER AFB (KDOV)

**⚠** MISSED APPROACH: Climbing right turn to 2000 direct DERE and hold, continue climb-in-hold to 2000.

ATIS <b>127.825 273.5</b>	APP CON <b>132.425 257.875</b>	TOWER <b>126.35 279.625</b>	GND CON <b>118.875 225.4</b>	CLNC DEL <b>125.55 289.4</b>
------------------------------	-----------------------------------	--------------------------------	---------------------------------	---------------------------------



<b>2000</b>	DEREE	5 NM holding pattern				ELEV 29	TDZE 26
<p>Rwy 14 ldg 8652'</p> <p>* LNAV only</p> <p>JAMOD ← 332° → MUKRE</p> <p>RWY 32 ← 318° → JAMOD</p> <p>* 1.1 NM to RWY 32</p> <p>6 NM</p> <p>2000</p> <p>152°</p> <p>2000</p> <p>GP 2.99°</p> <p>TCH 69</p>							
CATEGORY	A	B	C	D			
LPV DA	276-3/4	250	(300-3/4)				
LNAV/VNAV DA	456-13/8	430	(500-13/8)				
LNAV MDA	460-1	434 (500-1)	460-1 1/4	434 (500-1 1/4)			
CIRCLING	500-1	540-1	580-1 1/2	620-2			
	471 (500-1)	511 (600-1)	551 (600-1 1/2)	591 (600-2)			



NE-3, 24 MAY 2018 to 21 JUN 2018

NE-3, 24 MAY 2018 to 21 JUN 2018

DOVER, DELAWARE  
Amdt 3 24MAY18

39°08'N - 75°28'W

DOVER AFB (KDOV)

# RNAV (GPS) RWY 32