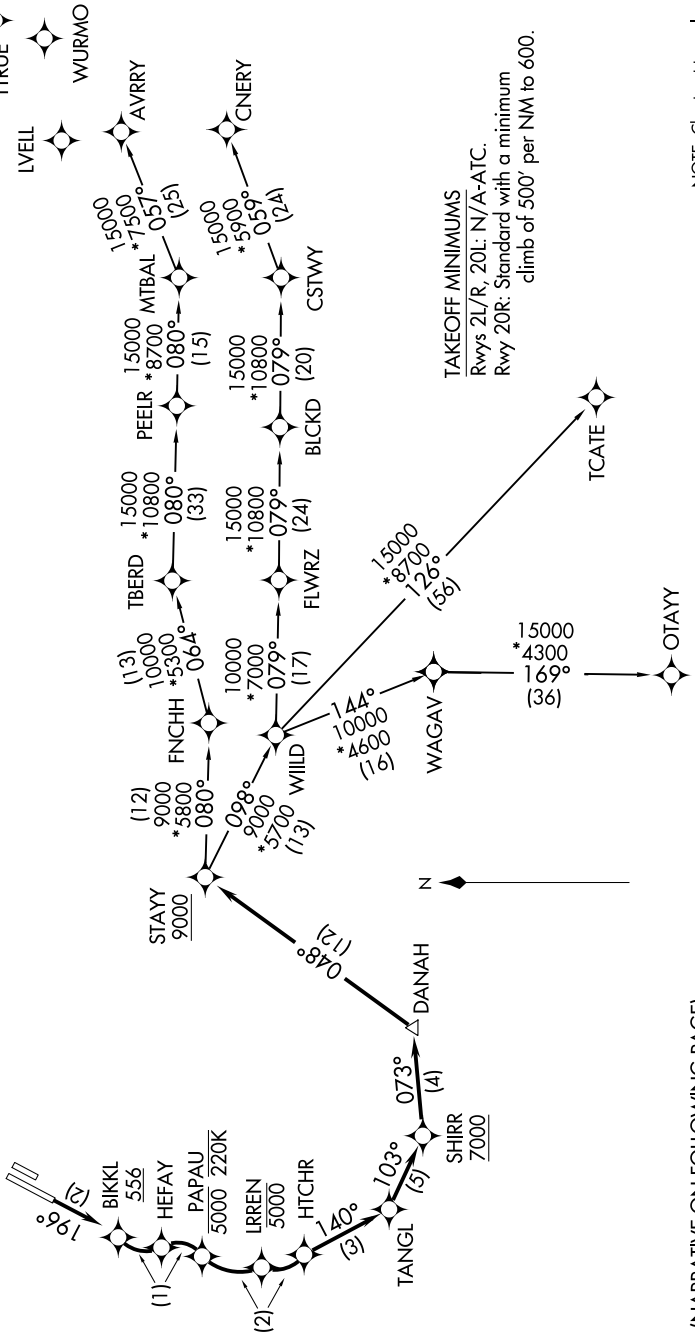


STAY ONE DEPARTURE (RNAV)

**TOP ALTITUDE:
13000**

- NOTE: RNP 1.
- NOTE: RF required.
- NOTE: GPS required.
- NOTE: RADAR required.
- NOTE: Turbojet only.
- NOTE: Parachute jumping all hours, 14000 and below, north of route between STAYY and FNCHH.

- D-ATIS 126.0
- CLINC DEL 118.0
- CPD/C
- GND CON
- 120.8 (EAST)
- 132.25 (WEST)
- JOHN WAYNE TOWER *
- 126.8 379.9
- SOCAL DEP CON
- 128.1 281.4



TAKEOFF MINIMUMS
 Rwy 2L/R, 20L: N/A-ATC.
 Rwy 20R: Standard with a minimum climb of 500' per NM to 600.

NOTE: Chart not to scale.

(NARRATIVE ON FOLLOWING PAGE)

SW-3, 24 MAY 2018 to 21 JUN 2018

SW-3, 24 MAY 2018 to 21 JUN 2018

STAY ONE DEPARTURE (RNAV)