

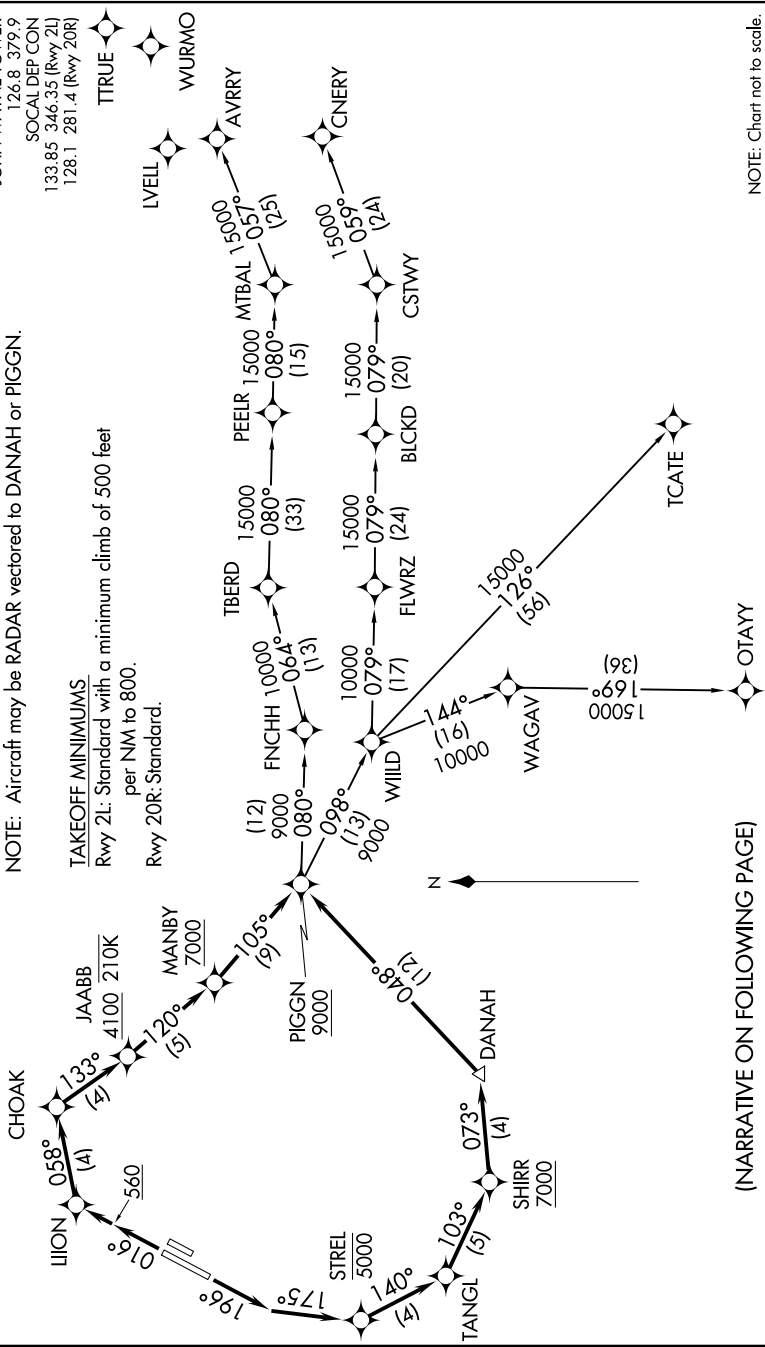
PIGGN TWO DEPARTURE (RNAV)

D-ATIS 126.0
 CLNC DEL 118.0
 CPDLC
 GND CON 120.8 (EAST)
 132.25 (WEST)
 JOHN WAYNE TOWER* 126.8 379.9
 SOCIAL DEP CON 128.1 281.4 (Rwy 20R)
 133.85 346.35 (Rwy 2L)

NOTE: RADAR required.
 NOTE: RNAV-1.
 NOTE: DME/DME/IRU or GPS required.
 NOTE: Turboprop and turboprop only.
 NOTE: Parachute jumping all hours, 14000' and below, north of route between PIGGN and FNCHH.
 NOTE: Aircraft may be RADAR vectored to DANAH or PIGGN.

TAKEOFF MINIMUMS
 Rwy 2L: Standard with a minimum climb of 500 feet per NM to 800.
 Rwy 20R: Standard.

TOP ALTITUDE:
13000



SW-3, 24 MAY 2018 to 21 JUN 2018

SW-3, 24 MAY 2018 to 21 JUN 2018