

MUSEL EIGHT DEPARTURE

D-ATIS
126.0
CLNC DEL
118.0
CPDLC
GND CON
(EAST) 120.8
(WEST) 132.25
SOCAL DEP CON
128.1 281.4

POMONA
110.4 POM
Chan 41
N34°04.70'-W117°47.22'

SEAL BEACH
115.7 SLI
Chan 104
N33°47.00'
W118°03.29'
L-3-4, H-4

LOCALIZER 111.75
I-SNA
Chan 54 (Y)

SANTA CATALINA
111.4 SXC
Chan 51

OCEANSIDE
115.3 OCN
Chan 100
N33°14.44'-W117°25.06'
L-4, H-4

JULIAN
114.0 JLI
Chan 87

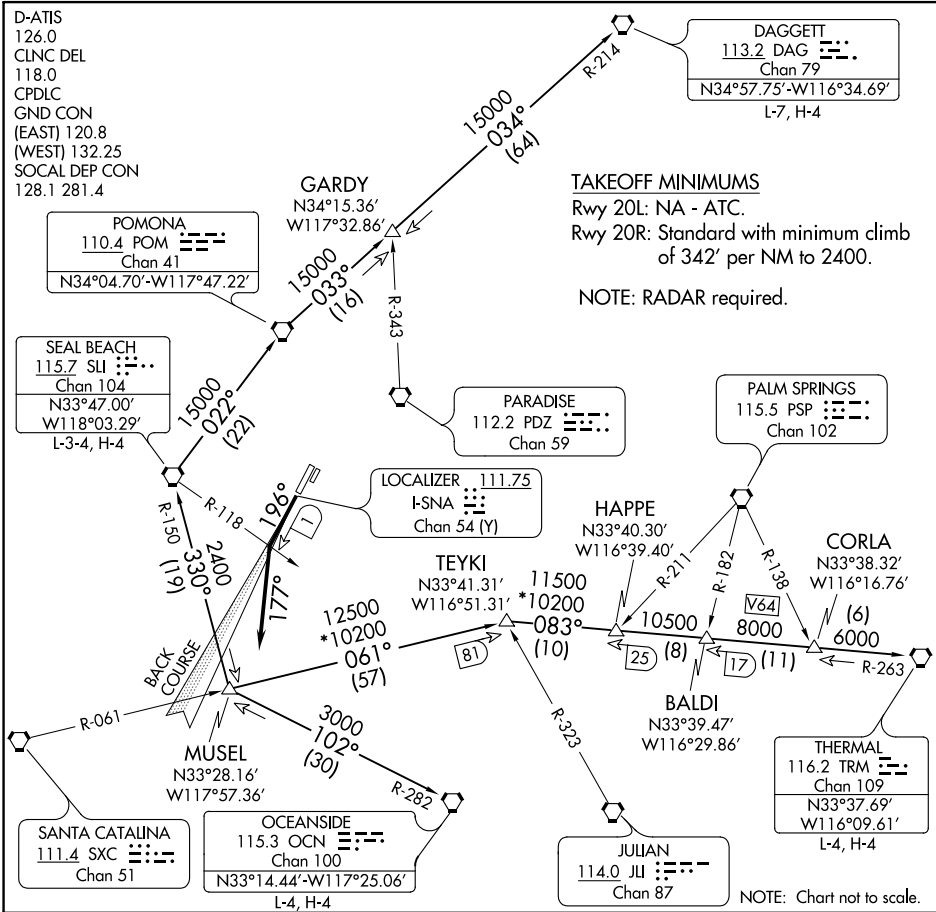
THERMAL
116.2 TRM
Chan 109
N33°37.69'
W116°09.61'
L-4, H-4

DAGGETT
113.2 DAG
Chan 79
N34°57.75'-W116°34.69'
L-7, H-4

TAKEOFF MINIMUMS

Rwy 20L: NA - ATC.
Rwy 20R: Standard with minimum climb
of 342' per NM to 2400.

NOTE: RADAR required.



SW-3, 24 MAY 2018 to 21 JUN 2018

SW-3, 24 MAY 2018 to 21 JUN 2018

DEPARTURE ROUTE DESCRIPTION

TAKEOFF RUNWAY 20R: Climb heading 196° or I-SNA localizer south course to I-SNA 1 DME fix or SLI R-118, turn left heading 177° for vectors to MUSEL INT. Thence

. . . . on (transition) or (assigned route). Expect filed altitude ten minutes after departure.

DAGGETT TRANSITION (MUSEL8.DAG): From over MUSEL INT on SLI R-150 to SLI VORTAC, then on SLI R-022 to POM VORTAC, then on POM R-033 to GARDY INT and on DAG R-214 to DAG VORTAC.

OCEANSIDE TRANSITION (MUSEL8.OCN): From over MUSEL INT on OCN R-282 to OCN VORTAC.

SEAL BEACH TRANSITION (MUSEL8.SLI): From over MUSEL INT on SLI R-150 to SLI VORTAC.

THERMAL TRANSITION (MUSEL8.TRM): From over MUSEL INT on SXC R-061 to TEYKI INT and TRM R-263 to TRM VORTAC.