

MIKAA ONE DEPARTURE (RNAV)

**TOP ALTITUDE:**  
14000

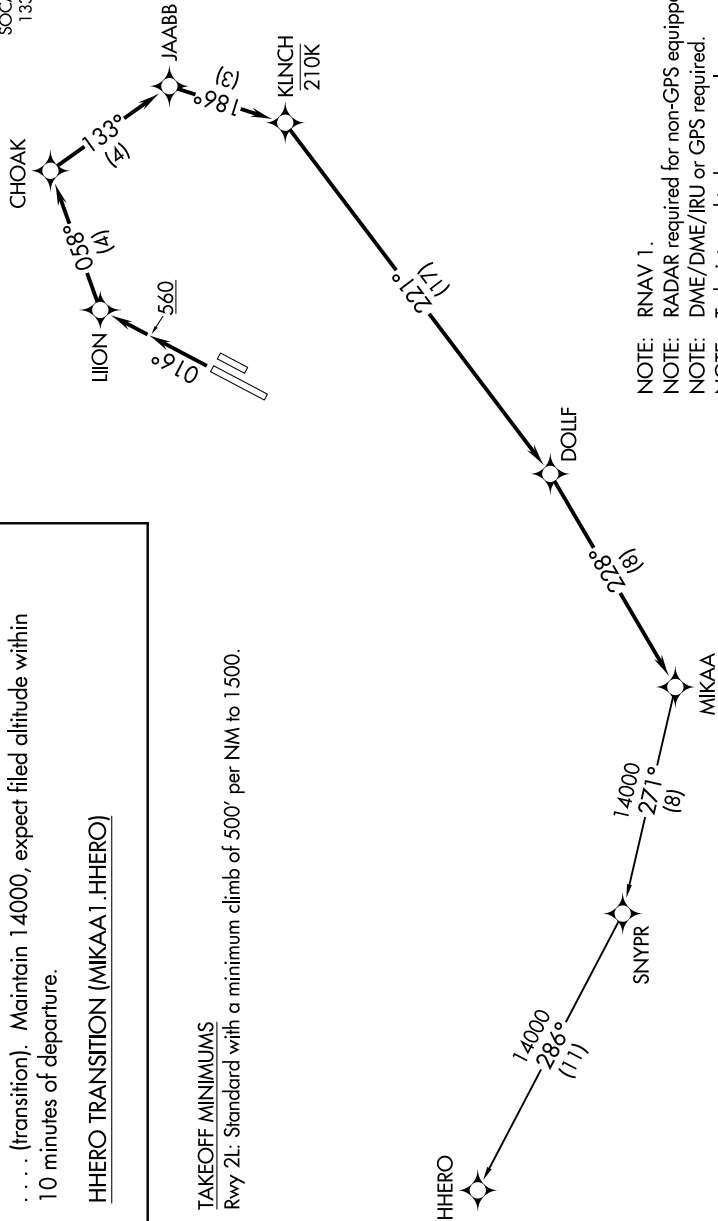
**DEPARTURE ROUTE DESCRIPTION**

**TAKEOFF RUNWAY 2L:** Climb heading 016°, then direct LIJON, then on track 058° to CHOAK, then on depicted route to MIKAA thence. . . .  
 . . . (transition). Maintain 14000, expect filed altitude within 10 minutes of departure.

HHERO TRANSITION (MIKAA1.HHERO)

**TAKEOFF MINIMUMS**  
Rwy 2L: Standard with a minimum climb of 500' per NM to 1500.

- D-ATIS 126.0
- CLNC DEL 118.0
- CPDLC 118.0
- GND CON 120.8 (EAST)
- 132.25 (WEST)
- SOCAL DEP CON 133.85 346.35



- NOTE: RNAV 1.
- NOTE: RADAR required for non-GPS equipped aircraft.
- NOTE: DME/DME/IRU or GPS required.
- NOTE: Turbojets and turboprops only.

SW-3, 24 MAY 2018 to 21 JUN 2018

SW-3, 24 MAY 2018 to 21 JUN 2018

MIKAA ONE DEPARTURE (RNAV)

NOTE: Chart not to scale.