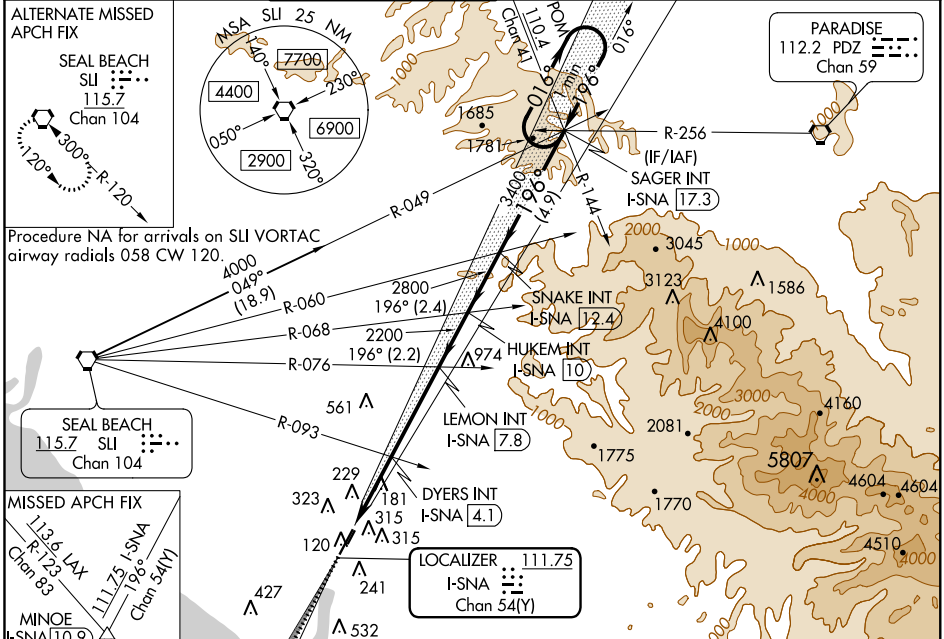


LOC/DME I-SNA 111.75 Chan 54(Y)	APP CRS 196°	Rwy Idg TDZE Apt Elev	5701 55 56
---	------------------------	-----------------------------	---------------------------------------

ILS or LOC RWY 20R

JOHN WAYNE AIRPORT-ORANGE COUNTY (SNA)

*RVR 1800 authorized with the use of FD or AP or HUD to DA.			MALSR 		MISSED APPROACH: Climb to 3000 on I-SNA LOC south course (196°) to MINOE INT/I-SNA 10.9 DME.	
D-ATIS 126.0	SOCAL APP CON 121.3 263.1	JOHN WAYNE TOWER * 126.8 (CTAF) 0 379.9	GND CON (EAST) 120.8 (WEST) 132.25	CLNC DEL 118.0	CPDLC	UNICOM 122.95



SW-3, 24 MAY 2018 to 21 JUN 2018

SW-3, 24 MAY 2018 to 21 JUN 2018

ELEV 56	TDZE 55	MINOE	VGSI and ILS glidepath not coincident (VGSI Angle 3.00/TCH 63).	SAGER INT I-SNA 17.3	One Minute Holding Pattern
CATEGORY	A	B	C	D	
S-ILS 20R*	255/24 200 (200-½)				
S-LOC 20R	1040/40 985 (1000-¾)	1040/55 985 (1000-1¼)	1040-2½ 985 (1000-2½)	985 (1000-2½)	
C CIRCLING	1040-1¼ 984 (1000-1¼)	1040-1½ 984 (1000-1½)	1040-3 984 (1000-3)	1160-3 1104 (1200-3)	
DYERS FIX MINIMUMS (DUAL VOR RECEIVERS OR DME REQUIRED)					
S-LOC 20R	440/24	385 (400-½)	440/35	385 (400-¾)	
C CIRCLING	640-1	584 (600-1)	840-2¼ 784 (800-2¼)	1160-3 1104 (1200-3)	