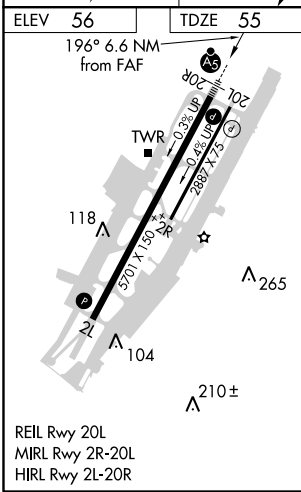
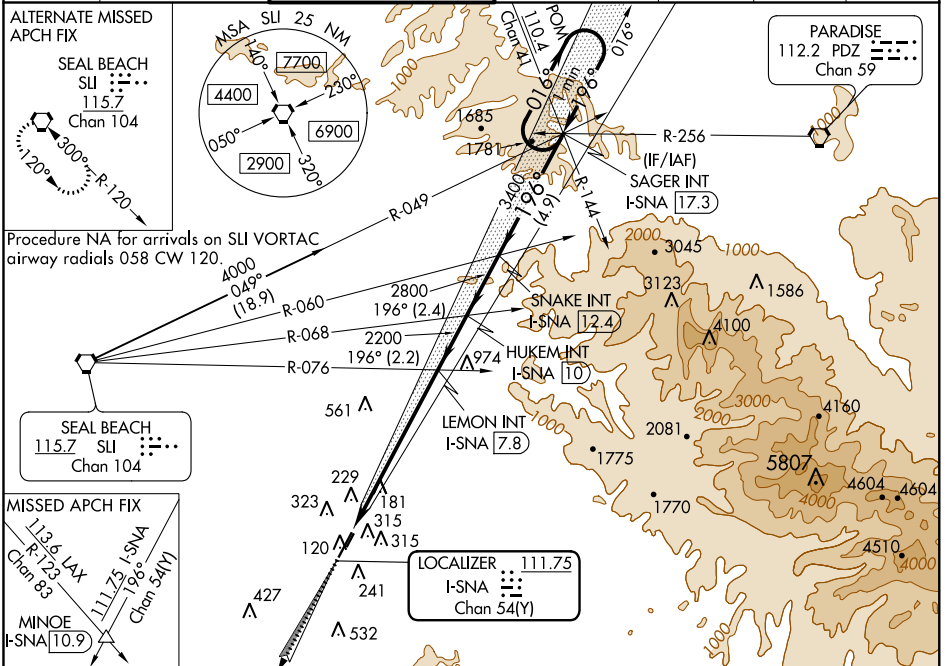


LOC/DME I-SNA <b>111.75</b> Chan <b>54(Y)</b>	APP CRS <b>196°</b>	Rwy Idg TDZE <b>55</b> Apt Elev <b>56</b>	<b>5701</b>
---	------------------------	---	-------------

# ILS RWY 20R (SA CAT I)

JOHN WAYNE AIRPORT-ORANGE COUNTY (SNA)

Requires specific OPSPEC, MSPEC, or LOA approval and use of HUD to DH. Procedure NA when control tower closed.			MALSR 		MISSED APPROACH: Climb to 3000 on I-SNA LOC south course (196°) to MINOE INT/I-SNA 10.9 DME.	
D-ATIS <b>126.0</b>	SOCAL APP CON <b>121.3 263.1</b>	JOHN WAYNE TOWER ★ <b>126.8 (CTAF) 0 379.9</b>	GND CON (EAST) <b>120.8</b> (WEST) <b>132.25</b>	CLNC DEL <b>118.0</b>	CPDLC	UNICOM <b>122.95</b>



3000 I-SNA 5 crs (196°)	MINOE	VGSI and ILS glidepath not coincident (VGSI Angle 3.00°/TCH 63).	SNAKE INT I-SNA 12.4	SAGER INT I-SNA 17.3	One Minute Holding Pattern
		HUKEM INT I-SNA 10	LEMON INT I-SNA 7.8	2200, 2800, 3400	GS 3.00° TCH 51
CATEGORY		A	B	C	D
S-ILS 20R		RA 201/14 166 DA 221			

**SA CATEGORY I ILS - SPECIAL AIRCREW & AIRCRAFT CERTIFICATION REQUIRED**

SW-3, 24 MAY 2018 to 21 JUN 2018

SW-3, 24 MAY 2018 to 21 JUN 2018