

(HHERO2.HHERO) 17285

HHERO TWO DEPARTURE (RNAV)

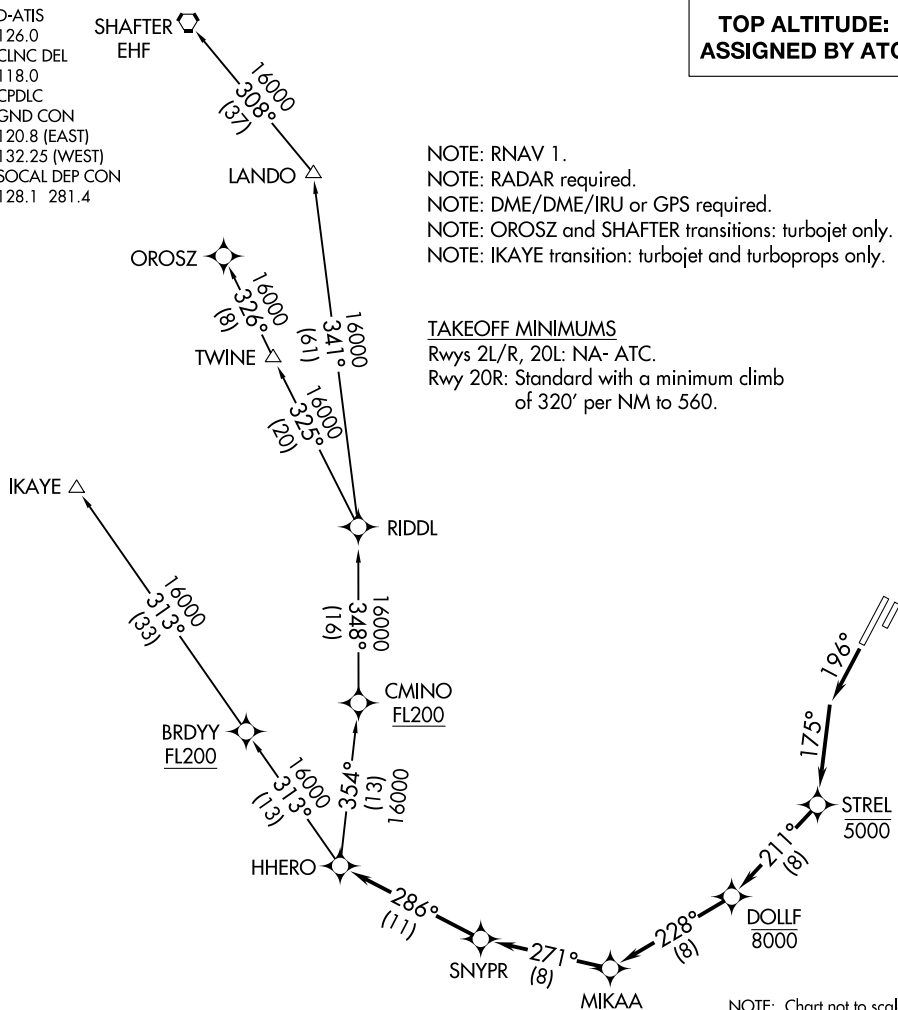
JOHN WAYNE AIRPORT-ORANGE COUNTY (SNA)
AL-377 (FAA)
SANTA ANA, CALIFORNIA

D-ATIS
126.0
CLNC DEL
118.0
CPDLC
GND CON
120.8 (EAST)
132.25 (WEST)
SOCAL DEP CON
128.1 281.4

**TOP ALTITUDE:
ASSIGNED BY ATC**

NOTE: RNAV 1.
NOTE: RADAR required.
NOTE: DME/DME/IRU or GPS required.
NOTE: OROSZ and SHAFTER transitions: turbojet only.
NOTE: IKAYE transition: turbojet and turboprops only.

TAKEOFF MINIMUMS
Rwys 2L/R, 20L: NA- ATC.
Rwy 20R: Standard with a minimum climb
of 320' per NM to 560.



SW-3, 24 MAY 2018 to 21 JUN 2018

SW-3, 24 MAY 2018 to 21 JUN 2018

NOTE: Chart not to scale.

DEPARTURE ROUTE DESCRIPTION

TAKEOFF RUNWAY 20R: Climb heading 196° to intercept course 175° to cross STREL at or below 5000, then on track 211° to cross DOLLF at or below 8000, then on depicted route to HHERO, thence. . . .

. . . (transition). Maintain altitude assigned by ATC. Expect filed altitude 10 minutes after departure.

IKAYE TRANSITION (HHERO2.IKAYE)

OROSZ TRANSITION (HHERO2.OROSZ)

SHAFTER TRANSITION (HHERO2.EHF)

HHERO TWO DEPARTURE (RNAV)
(HHERO2.HHERO) 12OCT17

SANTA ANA, CALIFORNIA
JOHN WAYNE AIRPORT-ORANGE COUNTY (SNA)