

(SERFR.WWAVS1) 17173

WWAVS ONE ARRIVAL (RNAV)

AL-375 (FAA)

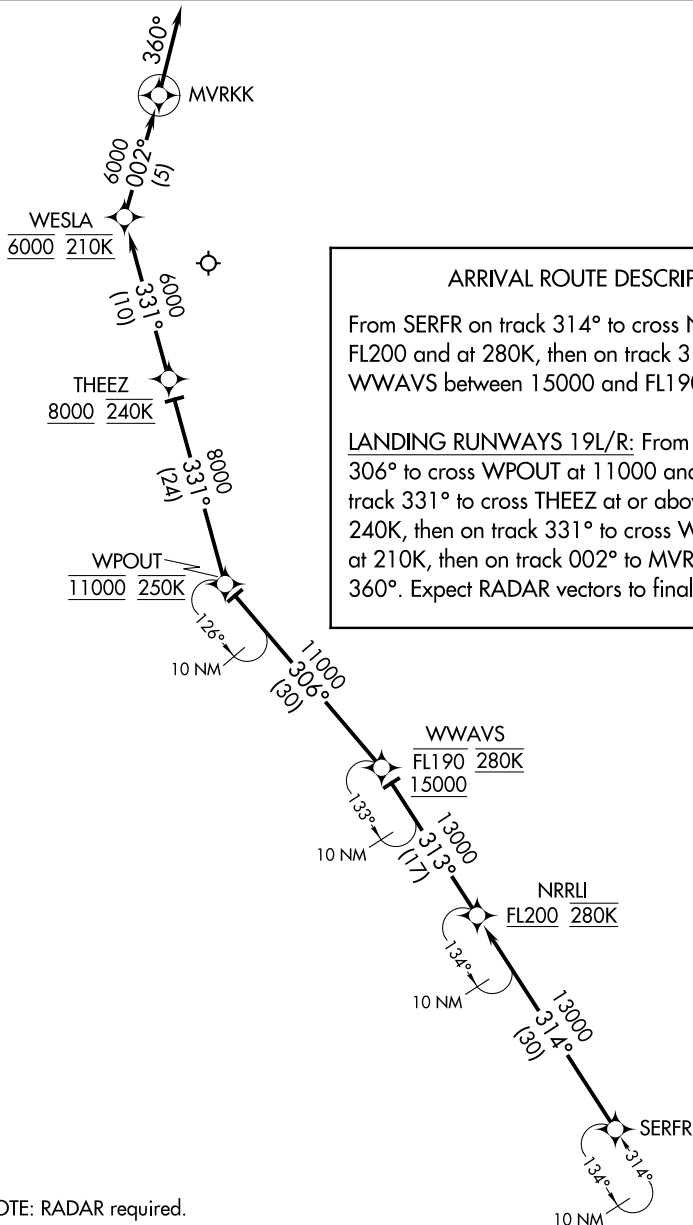
SAN FRANCISCO INTL (SFO)
SAN FRANCISCO, CALIFORNIA

D-ATIS
113.7 115.8 118.85
OAKLAND CENTER
134.55 290.5
NORCAL APP CON
128.575 254.25
SAN FRANCISCO TOWER
120.5 269.1
GND CON
121.8

ARRIVAL ROUTE DESCRIPTION

From SERFR on track 314° to cross NRRLI at or above FL200 and at 280K, then on track 313° to cross WWAVS between 15000 and FL190 and at 280K.

LANDING RUNWAYS 19L/R: From WWAVS on track 306° to cross WPOUT at 11000 and at 250K, then on track 331° to cross THEEZ at or above 8000 and at 240K, then on track 331° to cross WESLA at 6000 and at 210K, then on track 002° to MVRKK, then on track 360°. Expect RADAR vectors to final approach course.



NOTE: RADAR required.

NOTE: RNAV 1.

NOTE: DME/DME/IRU or GPS required.

NOTE: Chart not to scale.

MAKRS Δ

STOKD \diamond

WWAVS ONE ARRIVAL (RNAV)

(SERFR.WWAVS1) 10DEC15

SAN FRANCISCO, CALIFORNIA
SAN FRANCISCO INTL (SFO)

SW-2, 24 MAY 2018 to 21 JUN 2018

SW-2, 24 MAY 2018 to 21 JUN 2018