

(SSTIK3.SSTIK) 17341

# SSTIK THREE DEPARTURE (RNAV)

SAN FRANCISCO INTL (SFO)  
SAN FRANCISCO, CALIFORNIA

AL-375 (FAA)

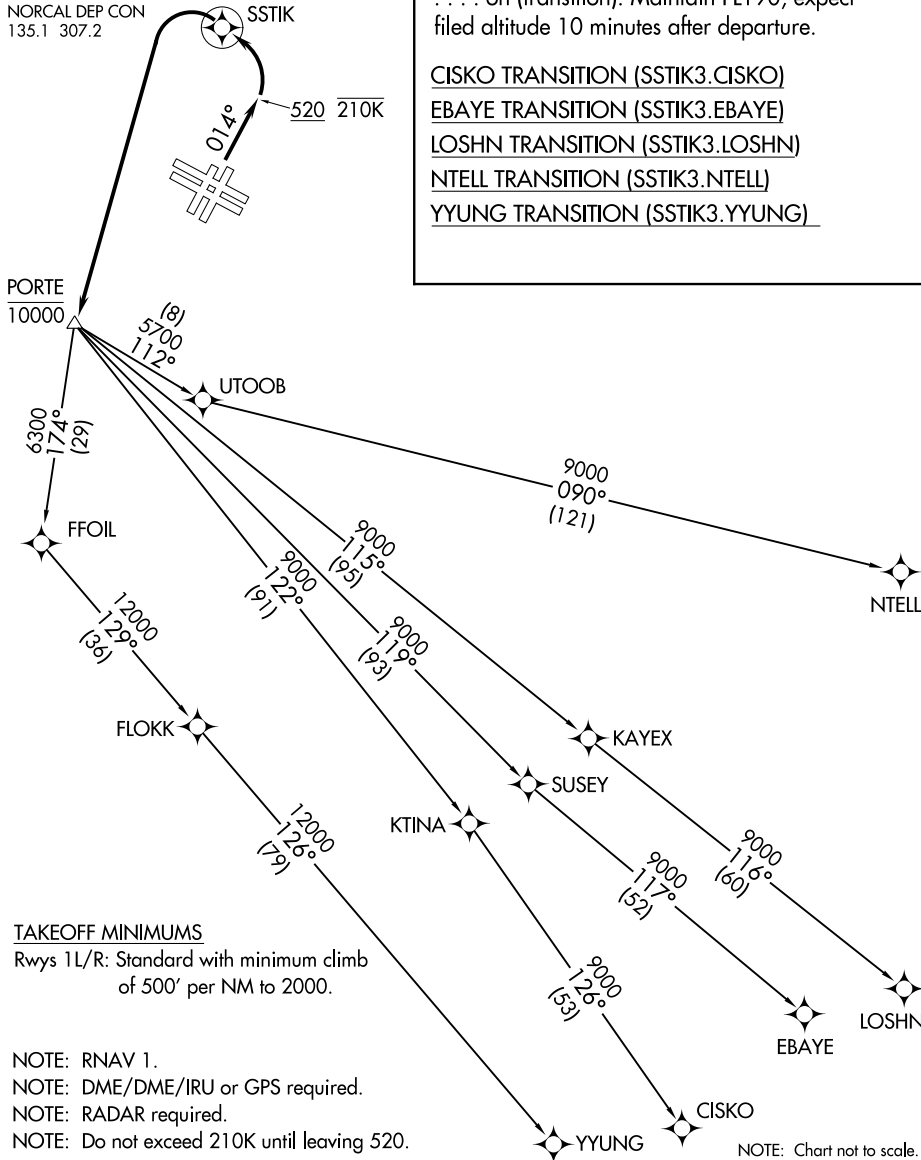
D-ATIS  
113.7 115.8 118.85  
CLNC DEL  
118.2  
CPDLC  
GND CON  
121.8  
SAN FRANCISCO TOWER  
120.5 269.1  
NORCAL DEP CON  
135.1 307.2

**TOP ALTITUDE:  
FL190**

## DEPARTURE ROUTE DESCRIPTION

**TAKEOFF RUNWAYS 1L/R:** Climb heading 014° to 520 then left turn direct to SSTIK, then left turn direct to cross PORTE at/below 10000. Thence. . . . . on (transition). Maintain FL190, expect filed altitude 10 minutes after departure.

- CISKO TRANSITION (SSTIK3.CISKO)
- EBAYE TRANSITION (SSTIK3.EBAYE)
- LOSHN TRANSITION (SSTIK3.LOSHN)
- NTELL TRANSITION (SSTIK3.NTELL)
- YYUNG TRANSITION (SSTIK3.YYUNG)



### TAKEOFF MINIMUMS

Rwys 1L/R: Standard with minimum climb of 500' per NM to 2000.

- NOTE: RNAV 1.
- NOTE: DME/DME/IRU or GPS required.
- NOTE: RADAR required.
- NOTE: Do not exceed 210K until leaving 520.

NOTE: Chart not to scale.

SW-2, 24 MAY 2018 to 21 JUN 2018

SW-2, 24 MAY 2018 to 21 JUN 2018

# SSTIK THREE DEPARTURE (RNAV)

(SSTIK3.SSTIK) 20AUG15

SAN FRANCISCO, CALIFORNIA  
SAN FRANCISCO INTL (SFO)