

APP CRS 104°	Rwy Idg 10704
	TDZE 10
	Apt Elev 13

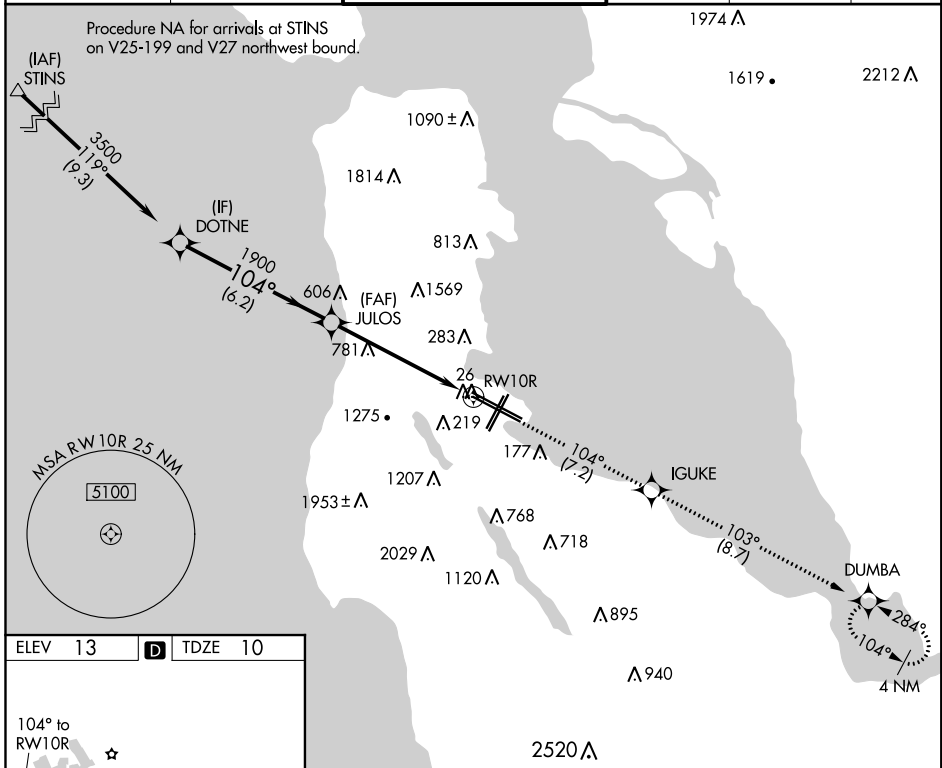
RNAV (RNP) Z RWY 10R

SAN FRANCISCO INTL (SFO)

⚠ For uncompensated Baro-VNAV systems, procedure NA below 2°C (36°F) or above 54°C (130°F). GPS required. When VGSI inop, procedure NA at night.

⚠ MISSED APPROACH: Climb to 3600 on track 104° to IGUKE and on track 103° to DUMBA and hold.

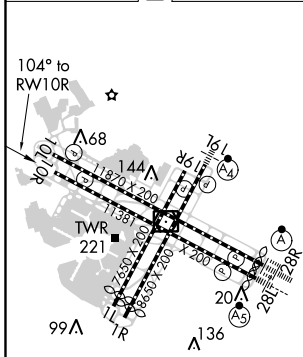
D-ATIS 113.7 115.8 118.85	NORCAL APP CON 134.5 338.2	SAN FRANCISCO TOWER 120.5 269.1	GND CON 121.8	CINC DEL 118.2	CPDLC
---	--------------------------------------	---	-------------------------	--------------------------	-------



SW-2, 24 MAY 2018 to 21 JUN 2018

SW-2, 24 MAY 2018 to 21 JUN 2018

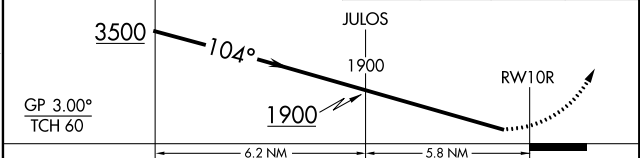
ELEV 13	D	TDZE 10
---------	----------	---------



TDZ/CL Rwys 19L and 28R
REIL Rwys 1L, 1R and 10L
HIRL all Rwys

VGSI and RNAV glidepath not coincident (VGSI Angle 3.00/TCH 68).

3600 tr 104°	IGUKE	DUMBA tr 103°
-----------------	-------	------------------



CATEGORY	A	B	C	D
RNP 0.20 DA		396-1¼	386 (400-1¼)	
RNP 0.30 DA		1108-4	1098 (1100-4)	

AUTHORIZATION REQUIRED