

LOC/DME I-GWQ 111.7 Chan 54	APP CRS 284°	Rwy Idg 11236	28R	28L
		TDZE 13	13	13
		Apt Elev 13	13	13

ILS or LOC RWY 28R

SAN FRANCISCO INTL (SFO)

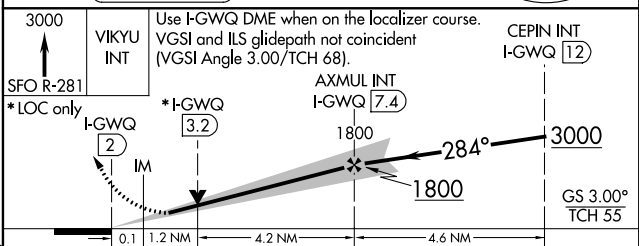
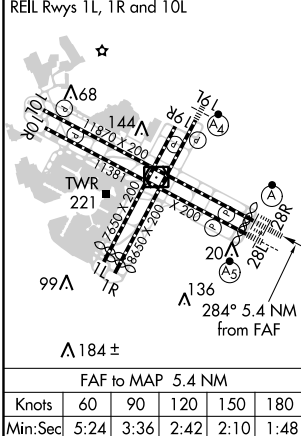
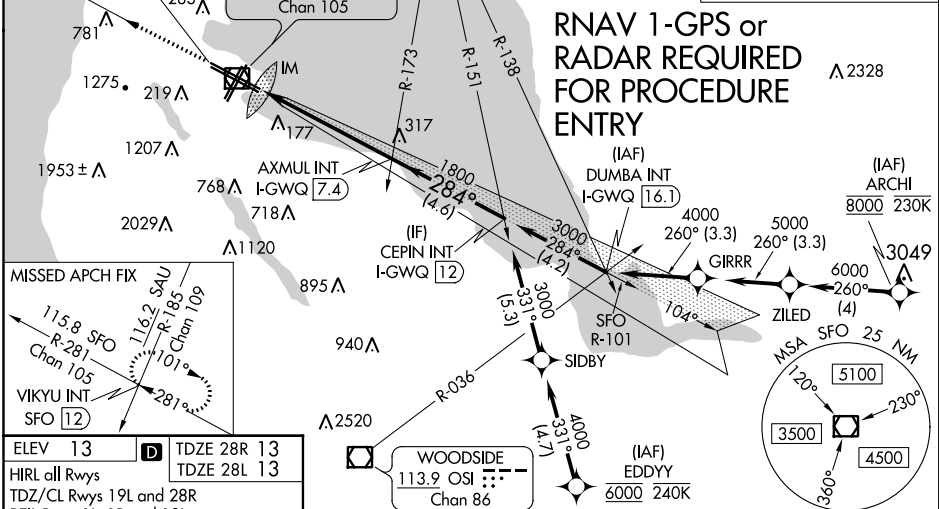
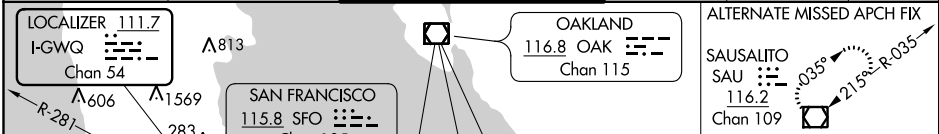
⚠ Circling NA to Rwsy 10L, 10R, 19L, and 19R. Circling Rwy 1L, 1R NA at night. For inop ALS increase S-LOC 28R Cat C/D visibility to 1 3/8 SM. ILS procedure NA during simultaneous operations. Simultaneous approach authorized. Simultaneous operations require use of vertical guidance; maintain last assigned altitude until established on glide slope.

ALSIF-2
Rwy 28R

MALSR
Rwy 28L

MISSED APPROACH: Climb to 3000 on SFO VOR/DME R-281 to VIKYU INT/SFO 12 DME and hold.
#Missed approach requires minimum climb of 350 feet per NM to 1900; if unable to meet climb gradient, see ILS or LOC RWY 28L.

D-ATIS 113.7 115.8 118.85	NORCAL APP CON 134.5 338.2	SAN FRANCISCO TOWER 120.5 269.1	GND CON 121.8	CLNC DEL 118.2	CPDLC
---	--------------------------------------	---	-------------------------	--------------------------	-------



CATEGORY	A		B		C		D	
S-ILS 28R#	213/18 200 (200-1/2)							
S-LOC 28R#	480/24 467 (500-1/2)				480/50 467 (500-1)			
SIDESTEP# 28L	480/55 467 (500-1 1/4)						480-1 1/2 467 (500-1 1/2)	
CIRCLING	740-1 727 (800-1)		960-1 1/4 947 (1000-1 1/4)		1560-3 1547 (1600-3)		NA	

SW-2, 24 MAY 2018 to 21 JUN 2018

SW-2, 24 MAY 2018 to 21 JUN 2018