

LOC/DME I-SIA 108.9 Chan 26	APP CRS 194°	Rwy Idg 8650 7650	19L 11	19R 11
		TDZE 11	11	11
		Apt Elev 13	13	13

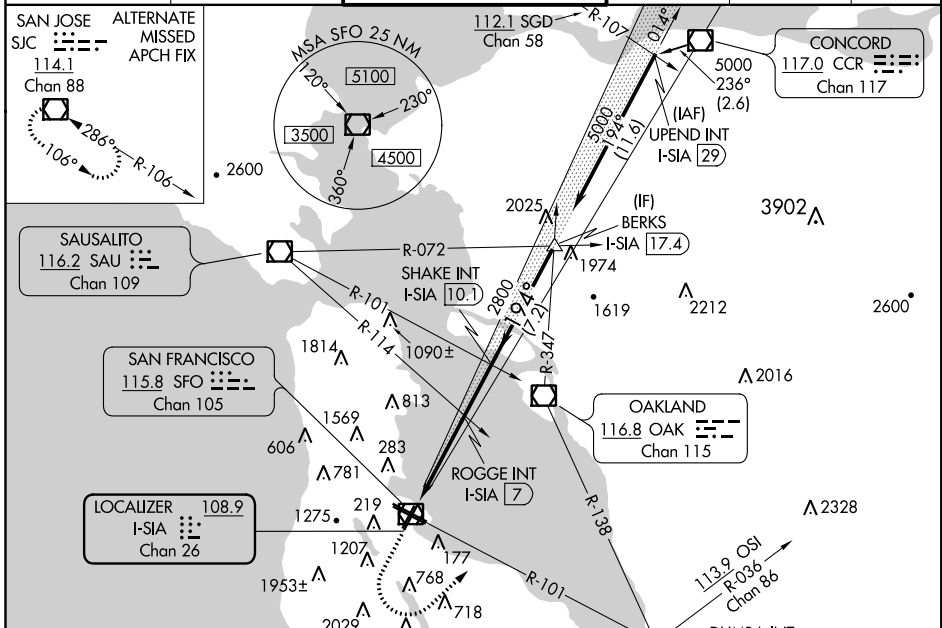
ILS or LOC RWY 19L

SAN FRANCISCO INTL (SFO)

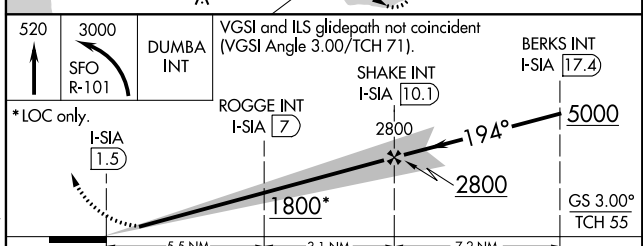
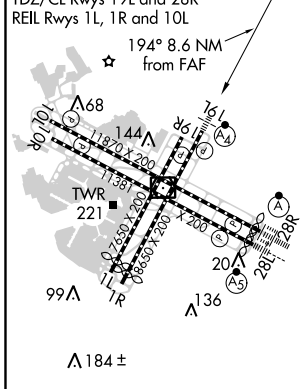
▼ Sidestep NA until passing ROGGE INT.
▲ For inop MALSF, increase ROGGE FIX minimums S-LOC 19L Cats C/D visibility to RVR 6000, increase S-ILS 19L Cat A/B visibility to RVR 4500. Inoperative table does not apply to Sidestep 19R or S-LOC 19L Cats C/D.

MALSF Rwy 19L MISSED APPROACH: Climb to 520 then climbing left turn to 3000 on SFO VOR/DME R-101 to DUMBA INT/SFO 15 DME and hold.

D-ATIS 113.7 115.8 118.85	NORCAL APP CON 134.5 338.2	SAN FRANCISCO TOWER 120.5 269.1	GND CON 121.8	CLNC DEL 118.2	CPDLC
---	--------------------------------------	---	-------------------------	--------------------------	-------



ELEV 13	D TDZE 19L 11
HIRL all Rwys	TDZE 19R 11
TDZ/CL Rwys 19L and 28R	
REIL Rwys 1L, 1R and 10L	



CATEGORY	A	B	C	D
S-ILS 19L	300/40	289 (300-¾)	300/50	289 (300-1)
S-LOC 19L	1800/55	1800/60	1800-3	1789 (1800-3)
ROGGE FIX MINIMUMS (DUAL RECEIVERS OR DME REQUIRED)				
S-LOC 19L	400/40	389 (400-¾)	400/50	389 (400-1)
SIDESTEP 19R	400/55	389 (400-1¼)	400-1½	400-2
			389 (400-1½)	389 (400-2)

SW-2, 24 MAY 2018 to 21 JUN 2018

SW-2, 24 MAY 2018 to 21 JUN 2018