

LOC/DME I-GWQ 111.7 Chan 54	APP CRS 284°	Rwy Idg 11236 TDZE 13 Apt Elev 13
---	------------------------	--

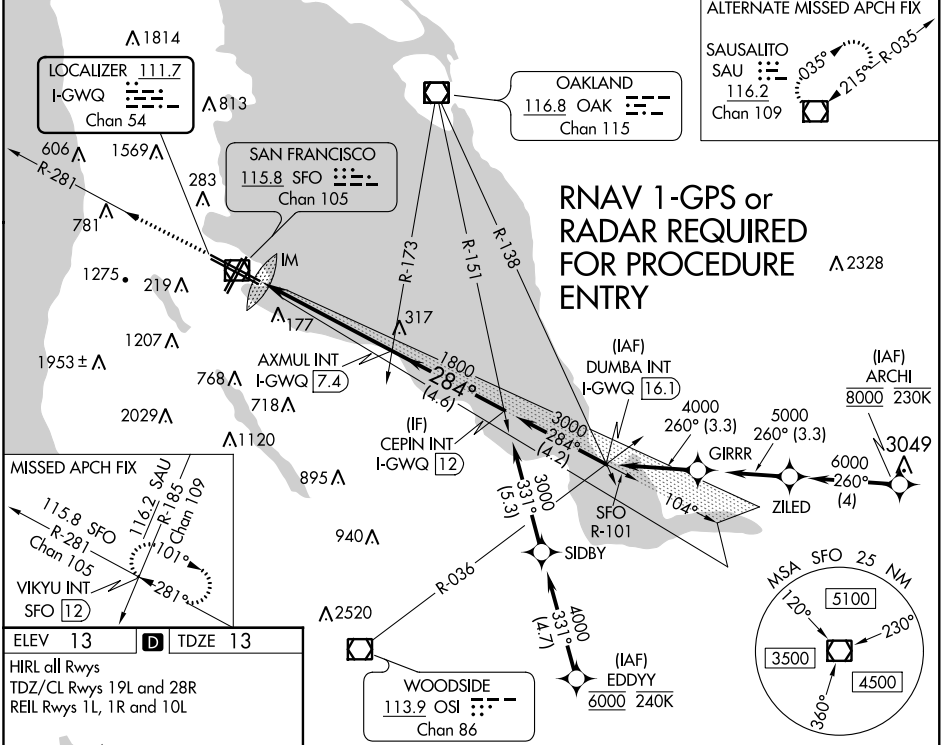
ILS RWY 28R (SA CAT I)

SAN FRANCISCO INTL (SFO)

Requires specific OPSPEC, MSPEC, or LOA approval and use of HUD to DH. Simultaneous approach authorized. Simultaneous operations require use of vertical guidance; maintain last assigned altitude until established on glideslope.

ALSF-2
MISSED APPROACH: Climb to 3000 on SFO VOR/DME R-281 to VIKYU INT/ SFO 12 DME and hold.

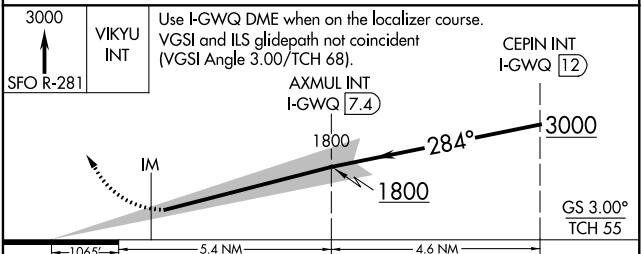
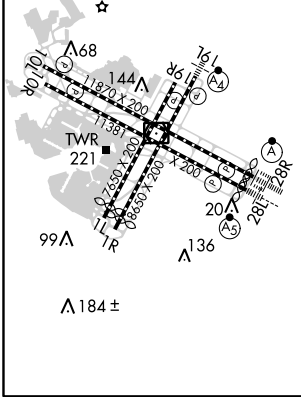
D-ATIS 113.7 115.8 118.85	NORCAL APP CON 134.5 338.2	SAN FRANCISCO TOWER 120.5 269.1	GND CON 121.8	CLNC DEL 118.2	CPDLC
---	--------------------------------------	---	-------------------------	--------------------------	-------



ALTERNATE MISSED APCH FIX
SAUSALITO SAU 116.2 Chan 109
035°
215°-R-035

MISSED APCH FIX
115.8 SFO R-281 Chan 105
VIKYU INT SFO 12
116.2 SAU R-185 Chan 109
101°
281°

ELEV 13 TDZE 13
HIRL all Rwys
TDZ/CL Rwys 19L and 28R
REIL Rwys 1L, 1R and 10L



CATEGORY	A	B	C	D
S-ILS 28R	RA 163/14 150 DA 163			

SA CATEGORY I ILS - SPECIAL AIRCREW & AIRCRAFT CERTIFICATION REQUIRED

SW-2, 24 MAY 2018 to 21 JUN 2018

SW-2, 24 MAY 2018 to 21 JUN 2018