

(LOZIT.BDEGA2) 17173

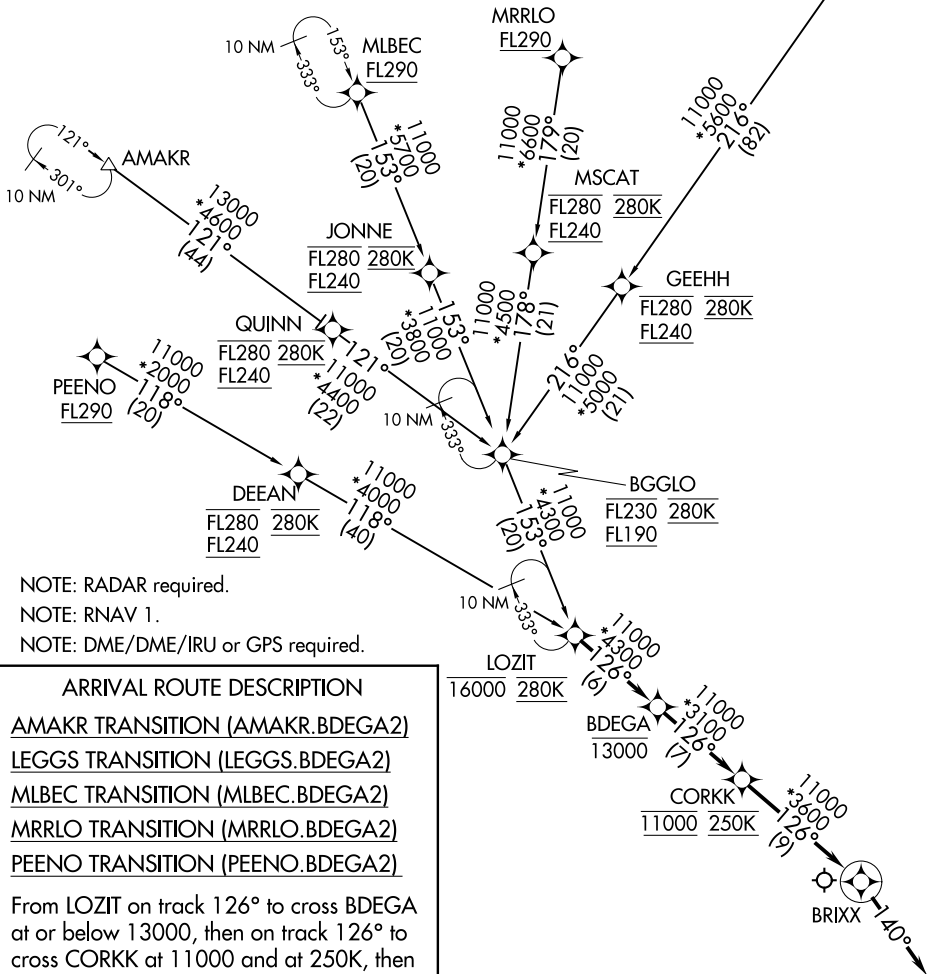
BDEGA TWO ARRIVAL (RNAV)

SAN FRANCISCO INTL (SFO)
SAN FRANCISCO, CALIFORNIA

AL-375 (FAA)



OAKLAND CENTER
125.85 323.0
NORCAL APP CON
133.95 317.6
D-ATIS
113.7 115.8 118.85
SAN FRANCISCO TOWER
120.5 269.1
GND CON
121.8



NOTE: RADAR required.
NOTE: RNAV 1.
NOTE: DME/DME/IRU or GPS required.

ARRIVAL ROUTE DESCRIPTION

- AMAKR TRANSITION (AMAKR.BDEGA2)
- LEGGS TRANSITION (LEGGS.BDEGA2)
- MLBEC TRANSITION (MLBEC.BDEGA2)
- MRRLO TRANSITION (MRRLO.BDEGA2)
- PEENO TRANSITION (PEENO.BDEGA2)

From LOZIT on track 126° to cross BDEGA at or below 13000, then on track 126° to cross CORKK at 11000 and at 250K, then on track 126° to BRIXX, then on track 140°.

Expect RADAR vectors to final approach course.

NOTE: Chart not to scale.

BDEGA TWO ARRIVAL (RNAV)

(LOZIT.BDEGA2) 15OCT15

SAN FRANCISCO, CALIFORNIA
SAN FRANCISCO INTL (SFO)

SW-2, 24 MAY 2018 to 21 JUN 2018

SW-2, 24 MAY 2018 to 21 JUN 2018