

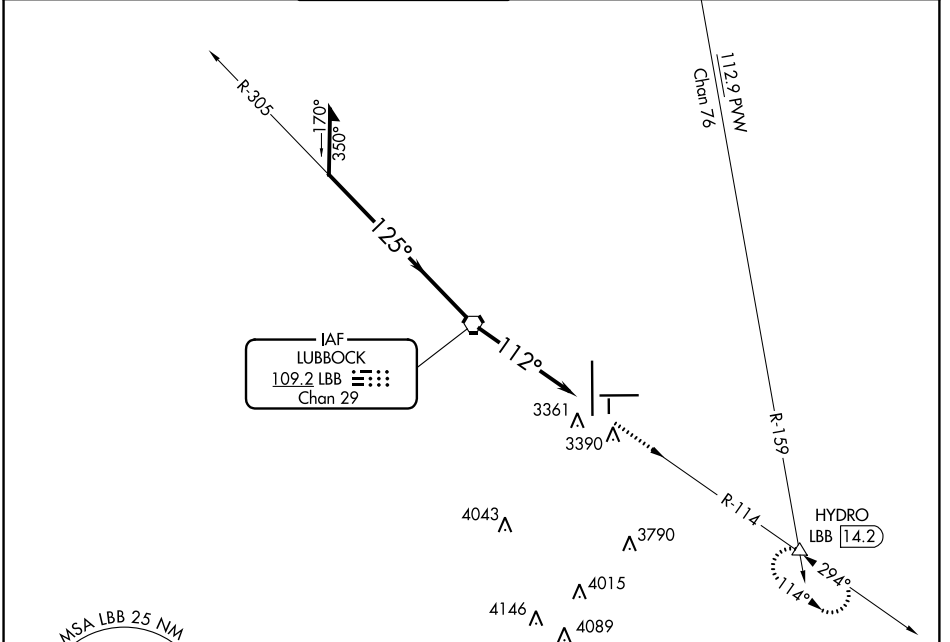
VORTAC LBB 109.2 Chan 29	APP CRS 112°	Rwy Idg TDZE Apt Elev 3282	N/A N/A 3282
---------------------------------------	------------------------	--	---

VOR-A

LUBBOCK PRESTON SMITH INTL (LBB)

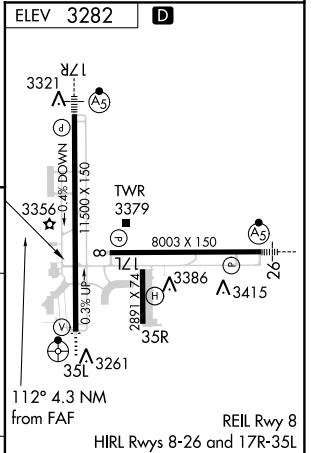
ASR MISSED APPROACH: Climb to 5200 via LBB R-114 to HYDRO INT and hold.

ATIS 125.3	LUBBOCK APP CON 119.2 351.8	LUBBOCK TOWER 120.5 239.3	GND CON 121.9 348.6	CLNC DEL 125.8 281.55
----------------------	---------------------------------------	-------------------------------------	-------------------------------	---------------------------------



SC-2, 24 MAY 2018 to 21 JUN 2018

SC-2, 24 MAY 2018 to 21 JUN 2018



CATEGORY	A	B	C	D
	3720-1 438 (500-1)	3740-1 458 (500-1)	3740-1½ 458 (500-1½)	3840-2 558 (600-2)

FAF to MAP 4.3 NM					
Knots	60	90	120	150	180
Min:Sec	4:18	2:52	2:09	1:43	1:26