

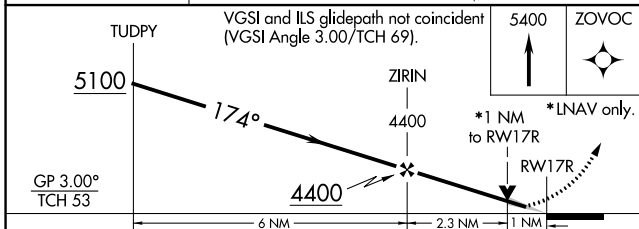
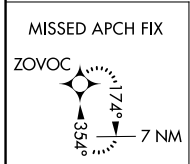
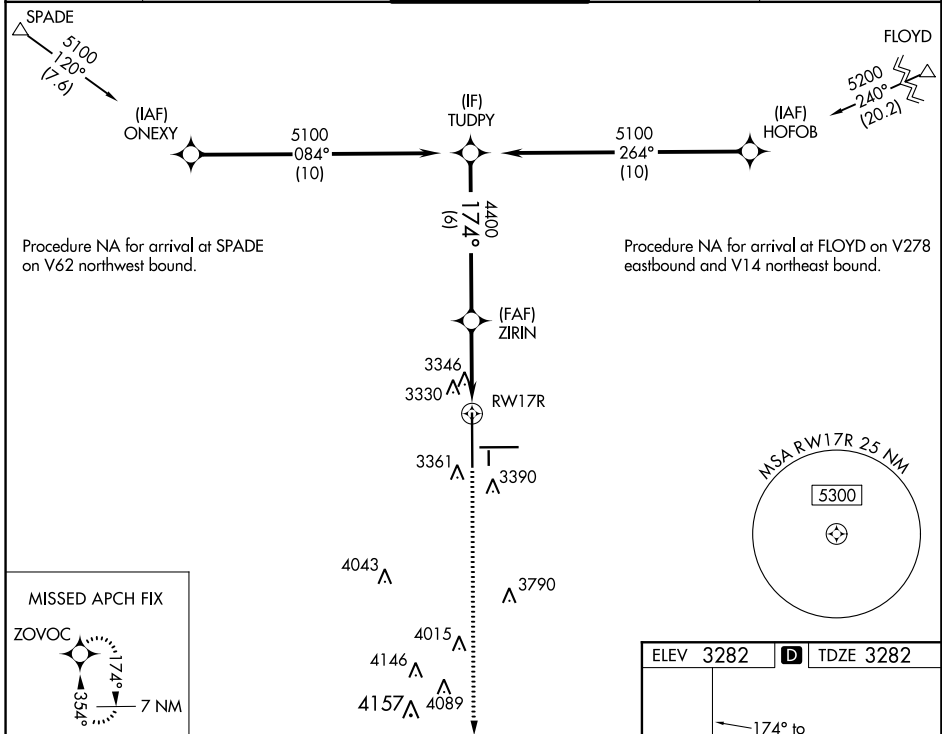
WAAS CH 40028 W17A	APP CRS 174°	Rwy Idg TDZE 3282 Apt Elev 3282
--	------------------------	---

RNAV (GPS) Y RWY 17R

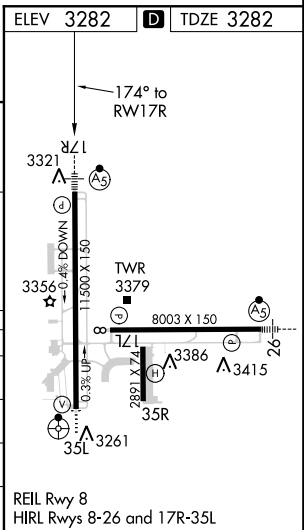
LUBBOCK PRESTON SMITH INTL (LBB)

For uncompensated Baro-VNAV systems, LNAV/VNAV NA below -12°C (11°F) or above 51°C (125°F). DME/DME RNP-0.3 NA. For inop MALS/R increase LPV Cat E visibility to RVR 4000, LNAV/VNAV Cat E visibility to RVR 5000 and LNAV Cat C/D/E visibility to RVR 4500. ** RVR 1800 authorized with use of FD or AP or HUD to DA.	MALS/R	MISSED APPROACH: Climb to 5400 direct ZOVOC and hold.
	ASR	

ATIS 125.3	LUBBOCK APP CON 119.2 351.8	LUBBOCK TOWER 120.5 239.3	GND CON 121.9 348.6	CLNC DEL 125.8 281.55
----------------------	---------------------------------------	-------------------------------------	-------------------------------	---------------------------------



CATEGORY	A	B	C	D	E
LPV DA **			3482/24	200 (200-½)	
LNAV/VNAV DA			3591/24	309 (400-½)	
LNAV MDA			3600/24	318 (400-½)	
CIRCLING	3720-1 438 (500-1)	3740-1 458 (500-1)	3880-1½ 598 (600-1½)	3940-2 658 (700-2)	4100-3 818 (900-3)



SC-2, 24 MAY 2018 to 21 JUN 2018

SC-2, 24 MAY 2018 to 21 JUN 2018