

APP CRS	Rwy Idg	11500
354°	TDZE	3254
	Apt Elev	3282

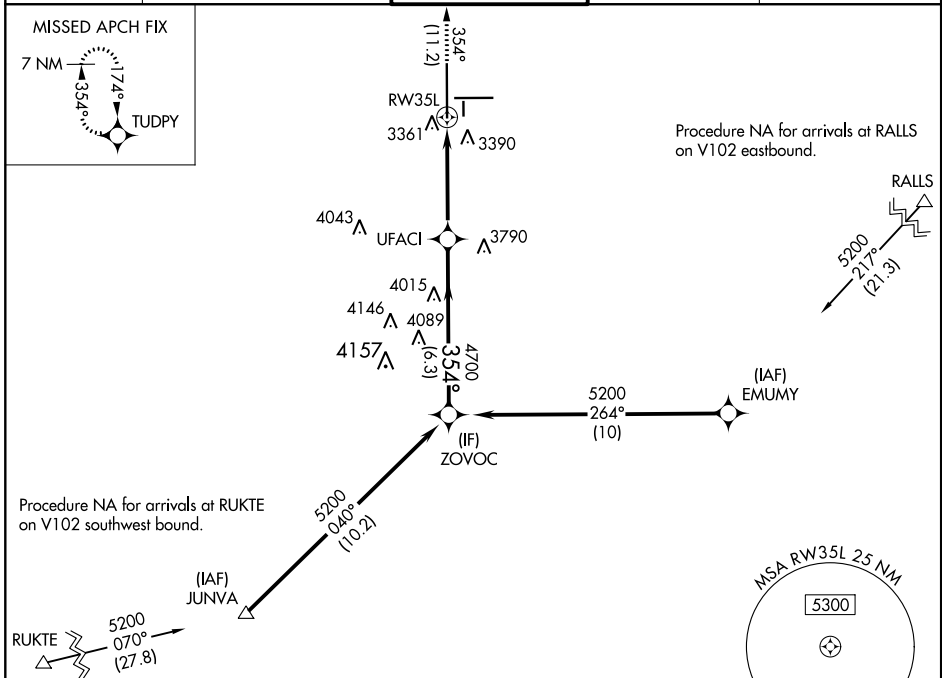
RNAV (RNP) Z RWY 35L

LUBBOCK PRESTON SMITH INTL (LBB)

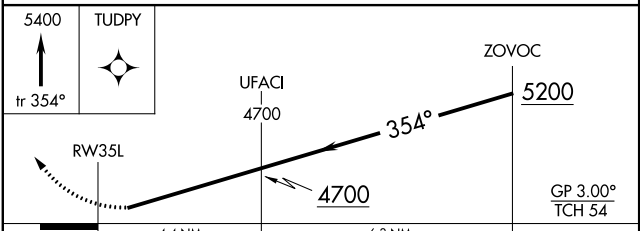
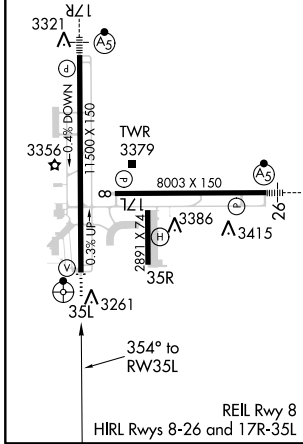
▽ For uncompensated Baro-VNAV systems, procedure NA below -12°C (11°F) or above 51°C (125°F). GPS required. For inop ODALS, increase RNP 0.18 DA all Cats visibility to 1 mile, and RNP 0.30 DA all Cats visibility to 1½ mile.

ODALS MISSED APPROACH: Climb to 5400 on track 354° to TUDPY and hold.

ATIS 125.3	LUBBOCK APP CON 119.2 351.8	LUBBOCK TOWER 120.5 239.3	GND CON 121.9 348.6	CLNC DEL 125.8 281.55
-----------------------------	--	--	--------------------------------------	--



ELEV 3282	D	TDZE 3254
------------------	----------	------------------



CATEGORY	A	B	C	D
RNP 0.18 DA		3559-7/8	305 (300-7%)	
RNP 0.30 DA		3620-1 1/8	366 (400-1 1/8)	

AUTHORIZATION REQUIRED