


# RNAV (RNP) Z RWY 17R

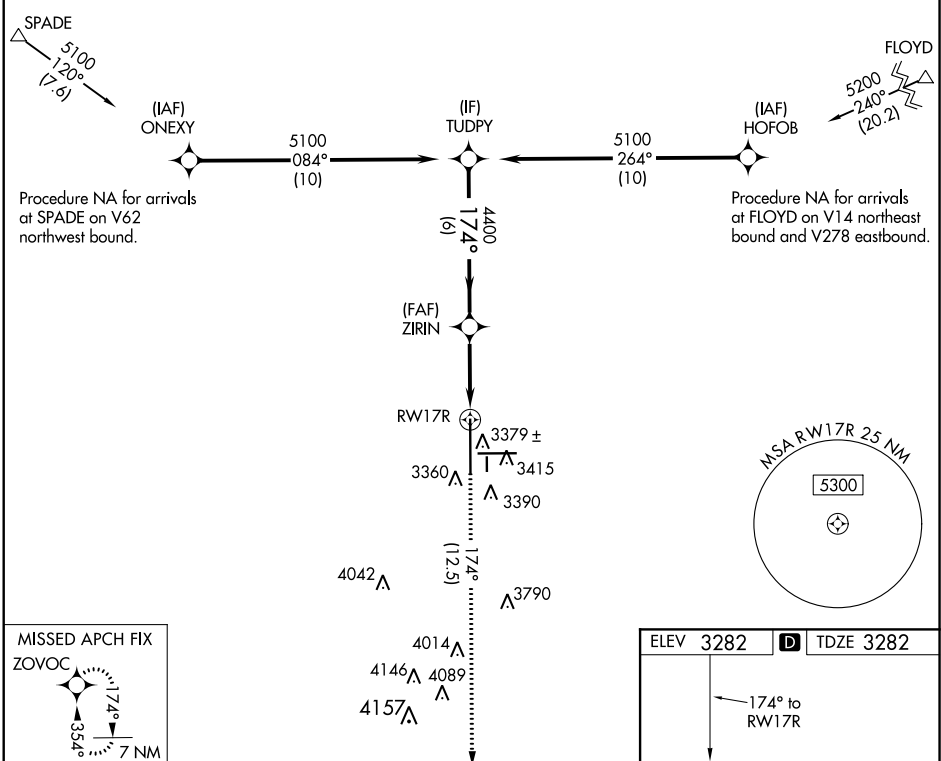
LUBBOCK PRESTON SMITH INTL (LBB)

APP CRS <b>174°</b>	Rwy Idg <b>11500</b>
	TDZE <b>3282</b>
	Apt Elev <b>3282</b>

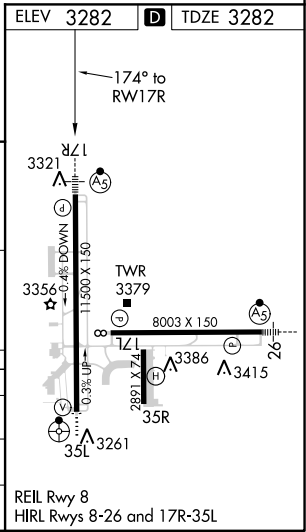
**▼** For uncompensated Baro-VNAV systems, procedure NA below -12°C (11°F) or above 51°C (125°F). GPS required. For inop MALSR, increase RNP 0.16 all Cats visibility to RVR 4500 and increase RNP 0.30 all Cats visibility to RVR 6000.

**MALSR**  
  
**MISSED APPROACH:** Climb to 5400 on track 174° to ZOVOC and hold.

ATIS <b>125.3</b>	LUBBOCK APP CON <b>119.2 351.8</b>	LUBBOCK TOWER <b>120.5 239.3</b>	GND CON <b>121.9 348.6</b>	CLNC DEL <b>125.8 281.55</b>
----------------------	---------------------------------------	-------------------------------------	-------------------------------	---------------------------------



TUDPY 5100 GP 3.00° TCH 52 174° 4400 6 NM 3.3 NM RWY17R	VGSi and RNAV glidepath not coincident (VGSi Angle 3.00/TCH 69).				5400 ZOVOC
	A	B	C	D	↑ fr 174°
CATEGORY					
RNP 0.16 DA		3549/24	267 (300-1/2)		
RNP 0.30 DA		3639/40	357 (400-3/4)		
<b>AUTHORIZATION REQUIRED</b>					



SC-2, 24 MAY 2018 to 21 JUN 2018

SC-2, 24 MAY 2018 to 21 JUN 2018