

WAAS CH 97327 W08A	APP CRS 084°	Rwy Idg TDZE Apt Elev	8003 3258 3282
--	------------------------	-----------------------------	---

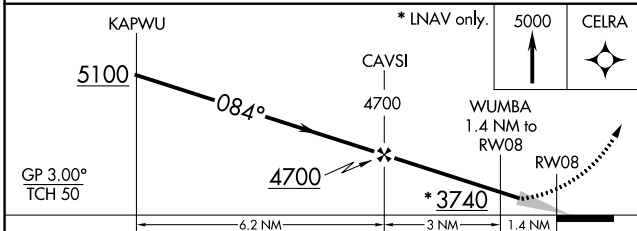
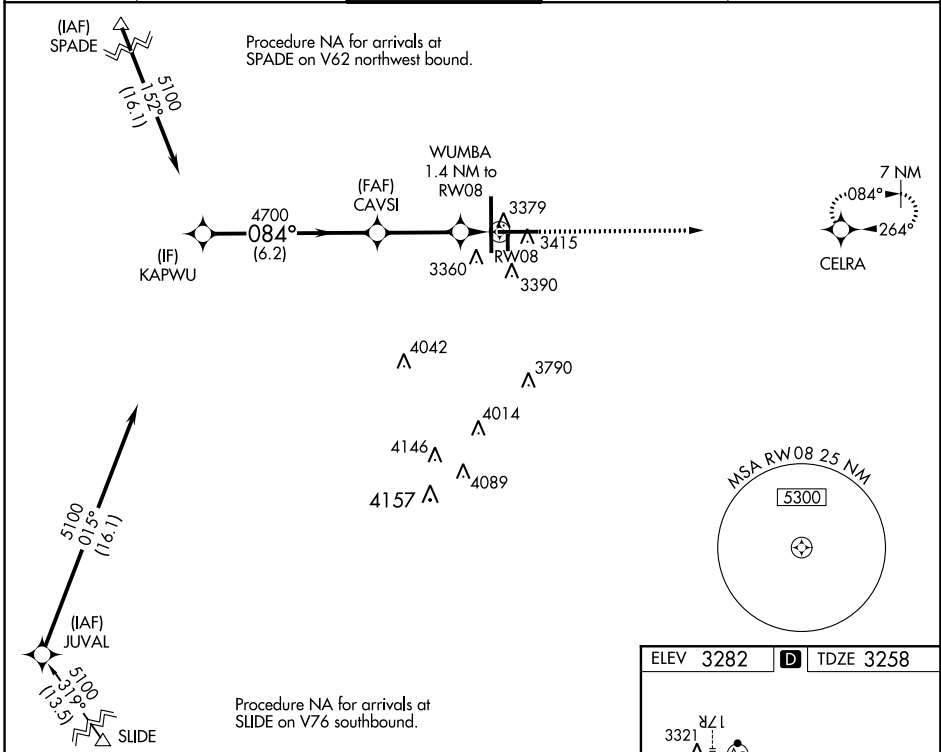
RNAV (GPS) RWY 8

LUBBOCK PRESTON SMITH INTL (LBB)

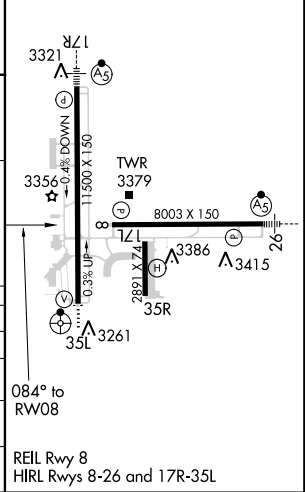
⚠ For uncompensated Baro-VNAV systems, LNAV/VNAV NA below -12°C (11°F) or above 52°C (126°F). DME/DME RNP-0.3 NA.

⚠ MISSED APPROACH: Climb to 5000 direct CELRA and hold.

ATIS 125.3	LUBBOCK APP CON 119.2 351.8	LUBBOCK TOWER 120.5 239.3	GND CON 121.9 348.6	CLNC DEL 125.8 281.55
----------------------	---------------------------------------	-------------------------------------	-------------------------------	---------------------------------



ELEV 3282	D TDZE 3258
-----------	--------------------



CATEGORY	A	B	C	D	E
LPV DA	3458- ³ / ₄		200 (200- ³ / ₄)		
LNAV/VNAV DA	3543- ⁷ / ₈		285 (300- ⁷ / ₈)		
LNAV MDA	3640-1 382 (400-1)		3640-1 ¹ / ₈ 382 (400-1 ¹ / ₈)		
C CIRCLING	3720-1 438 (500-1)	3740-1 458 (500-1)	3880-1 ¹ / ₂ 598 (600-1 ¹ / ₂)	3940-2 658 (700-2)	4100-3 818 (800-3)

SC-2, 24 MAY 2018 to 21 JUN 2018

SC-2, 24 MAY 2018 to 21 JUN 2018