


WAAS CH 45528 W26A	APP CRS 264°	Rwy Idg TDZE Apt Elev	8003 3255 3282
--	------------------------	-----------------------------	---

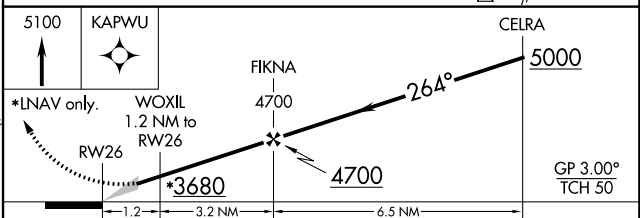
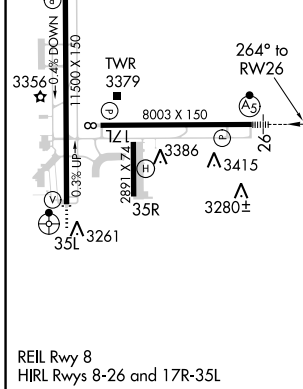
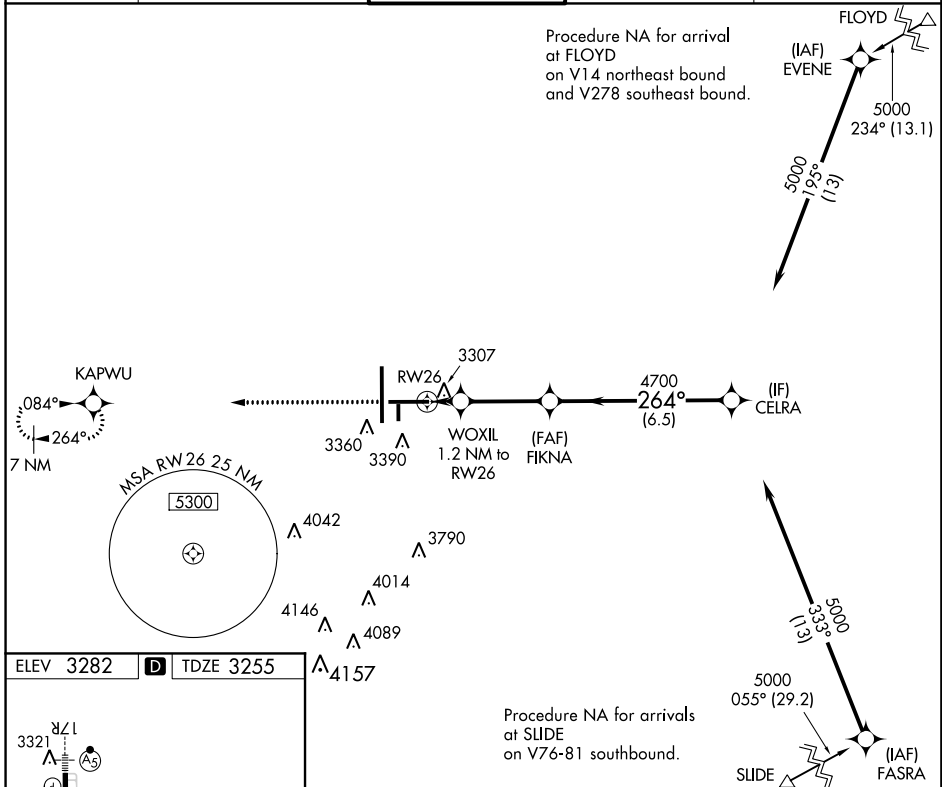
RNAV (GPS) RWY 26

LUBBOCK PRESTON SMITH INTL (LBB)

⚠ For uncompensated Baro-VNAV systems, LNAV/VNAV NA below -12°C (11°F) or above 52°C (126°F). DME/DME RNP-0.3 NA. For inop MALS, increase LNAV/VNAV all Cats visibility to RVR 5000. ** RVR 1800 authorized with use of FD or AP or HUD to DA.

MALS  MISSED APPROACH: Climb to 5100 direct KAPWU and hold.

ATIS 125.3	LUBBOCK APP CON 119.2 351.8	LUBBOCK TOWER 120.5 239.3	GND CON 121.9 348.6	CLNC DEL 125.8 281.55
----------------------	---------------------------------------	-------------------------------------	-------------------------------	---------------------------------



CATEGORY	A	B	C	D	E
LPV DA **		3455/24	200 (200-½)		
LNAV/VNAV DA		3578/30	323 (400-¾)		
LNAV MDA		3560/24	305 (300-½)		
C CIRCLING	3720-1 438 (500-1)	3740-1 458 (500-1)	3880-1½ 598 (600-1½)	3940-2 658 (700-2)	4100-3 818 (900-3)

SC-2, 24 MAY 2018 to 21 JUN 2018

SC-2, 24 MAY 2018 to 21 JUN 2018