

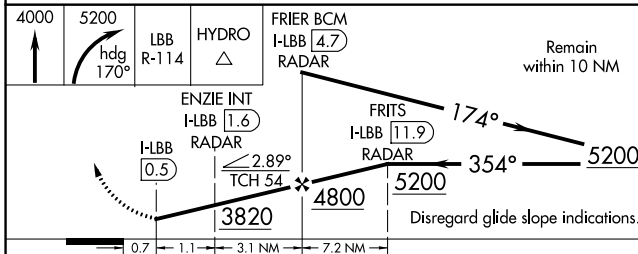
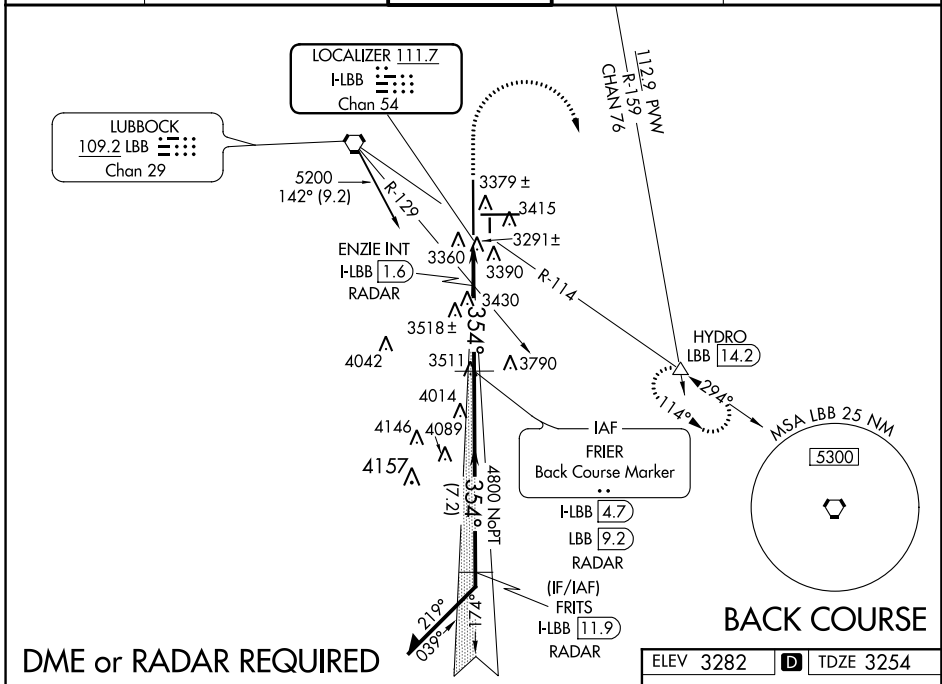
LOC I-LBB 111.7 Chan 54	APP CRS 354°	Rwy Idg 11500 TDZE 3254 Apt Elev 3282
--------------------------------------	------------------------	--

LOC BC RWY 35L
LUBBOCK PRESTON SMITH INTL (LBB)

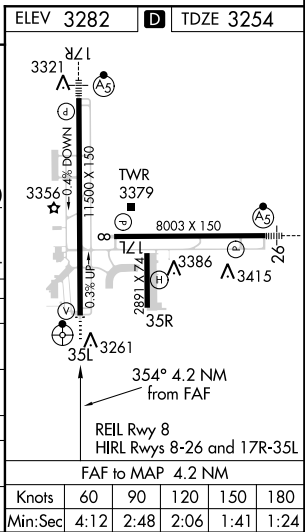
▼ For inop ODALS, increase Cat C/D visibility to 1½ mile. ENZIE Fix Minimums, for inop ODALS, increase Cat C/D visibility to ¾ mile.

ODALS MISSED APPROACH: Climb to 4000 then climbing right turn to 5200 on heading 170° and on LBB VORTAC R-114 to HYDRO INT/LBB 14.2 DME and hold.

ATIS 125.3	LUBBOCK APP CON 119.2 351.8	LUBBOCK TOWER 120.5 239.3	GND CON 121.9 348.6	CLNC DEL 125.8 281.55
----------------------	---------------------------------------	-------------------------------------	-------------------------------	---------------------------------



CATEGORY	A	B	C	D
S-35L	3820-¾ 566 (600-¾)		3820-1½ 566 (600-1½)	
C CIRCLING	3820-1 538 (600-1)		3880-1½ 598 (600-1½)	3940-2 658 (600-2)
ENZIE FIX MINIMUMS				
S-35L	3560-¾ 306 (300-¾)			
C CIRCLING	3720-1 438 (500-1)	3740-1 458 (500-1)	3880-1½ 598 (600-1½)	3940-2 658 (700-2)



SC-2, 24 MAY 2018 to 21 JUN 2018

SC-2, 24 MAY 2018 to 21 JUN 2018