

LOC I-DLT 111.9	APP CRS 264°	Rwy Idg 8003
		TDZE 3255
		Apt Elev 3282

ILS or LOC RWY 26

LUBBOCK PRESTON SMITH INTL (LBB)

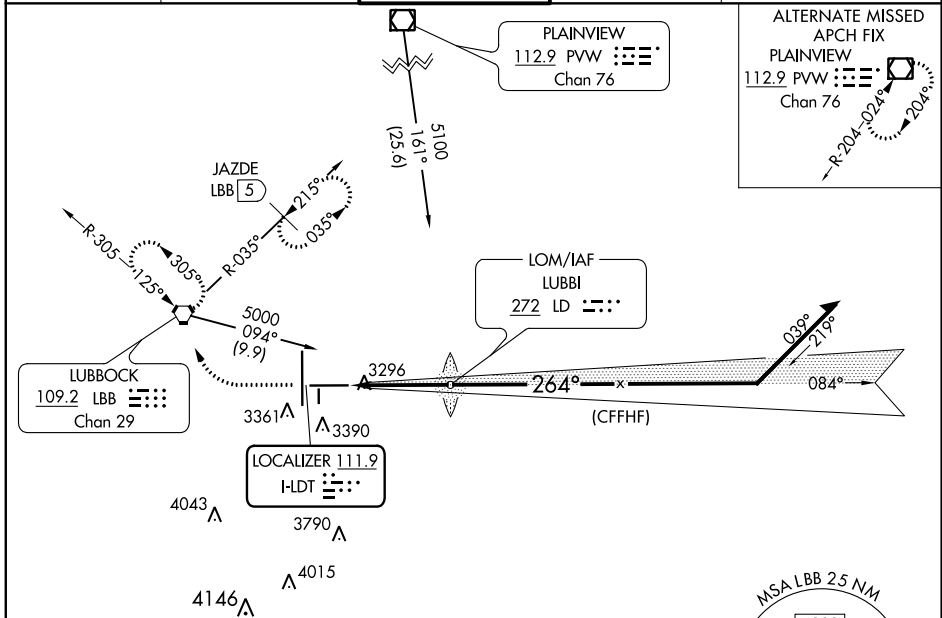
▽ For inop MALSR, increase S-ILS 26 Cat E visibility to RVR 4000 and increase S-LOC 26 Cat C/D/E visibility to RVR 4500.
▲ #RVR 1800 authorized with use of FD or AP or HUD to DA.

MALSR



MISSED APPROACH: Climb to 3800 then climbing right turn to 4800 direct LBB VORTAC and hold (TACAN aircraft climb to 3800 then climbing right turn to 5100 on heading 300° and on LBB VORTAC R-035 to JAZDE/LBB 5 DME and hold northeast left turn 215° inbound).

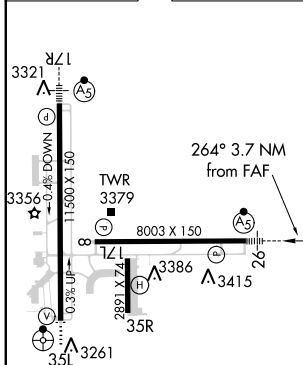
ATIS 125.3	LUBBOCK APP CON 119.2 351.8	LUBBOCK TOWER 120.5 239.3	GND CON 121.9 348.6	CLNC DEL 125.8 281.55
----------------------	---------------------------------------	-------------------------------------	-------------------------------	---------------------------------



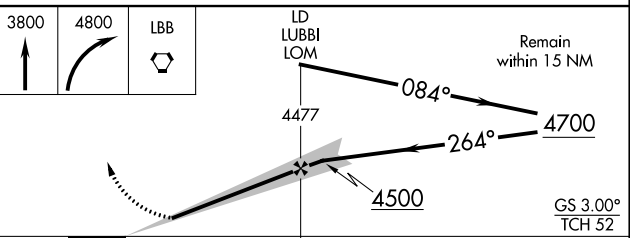
SC-2, 24 MAY 2018 to 21 JUN 2018

SC-2, 24 MAY 2018 to 21 JUN 2018

ELEV 3282	D	TDZE 3255
-----------	----------	-----------



ADF OR RADAR REQUIRED



REIL Rwy 8	HIRL Rws 8-26 and 17R-35L	FAF to MAP 3.7 NM					
Knots	60	90	120	150	180		
Min:Sec	3:42	2:28	1:51	1:29	1:14		
C CIRCLING	3720-1 438 (500-1)	3740-1 458 (500-1)	3880-1½ 598 (600-1½)	3940-2 658 (700-2)	4100-3 818 (900-3)		