

# HI-VOR/DME or TACAN RWY 26

VORTAC LBB <b>109.2</b> Chan <b>29</b>	APCH CRS <b>282°</b>	Rwy Ldg THRE Arpt Elev <b>8003</b> <b>3253</b> <b>3282</b>
--	-------------------------	---

JAL-241 [USAF]

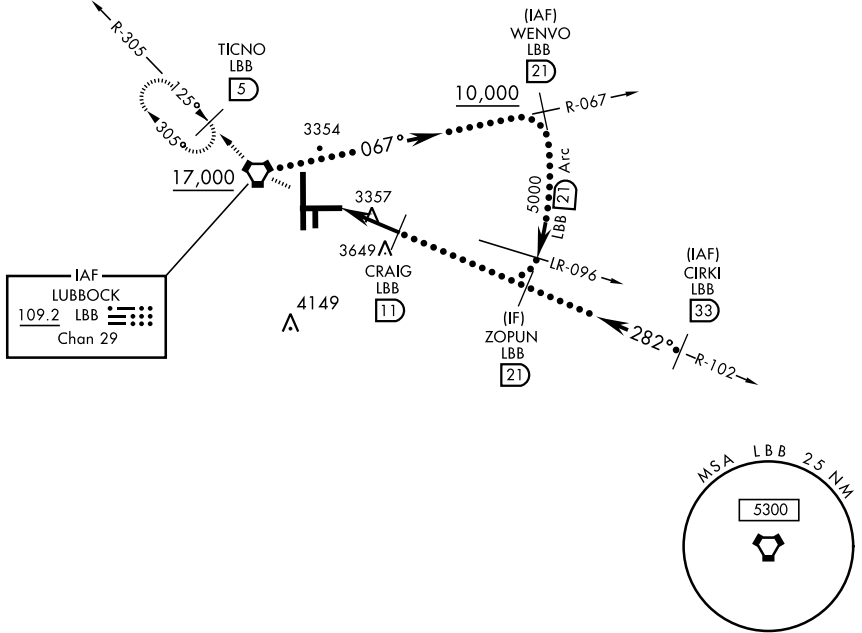
LUBBOCK PRESTON SMITH INTL (KLBB)

▼ \* Inoperative Table does not apply.



MISSED APPROACH: Climb and maintain 5100 direct LBB VORTAC and via LBB R-305 to TICNO (LBB 5 DME) and hold.

ATIS <b>125.3</b>	LUBBOCK APP CON <b>119.2 351.8</b>	LUBBOCK TOWER <b>120.5 239.3</b>	GND CON <b>121.9 348.6</b>	CLNC DEL <b>125.8 281.55</b>
----------------------	---------------------------------------	-------------------------------------	-------------------------------	---------------------------------



IAF  
LUBBOCK  
109.2 LBB  
Chan 29

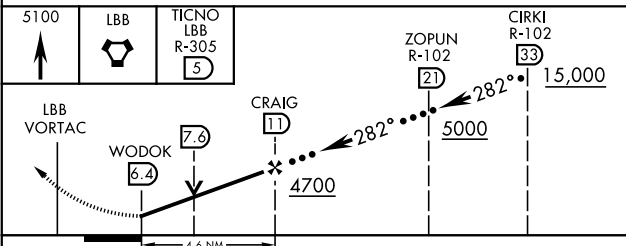
SC-2, 24 MAY 2018 to 21 JUN 2018

SC-2, 24 MAY 2018 to 21 JUN 2018

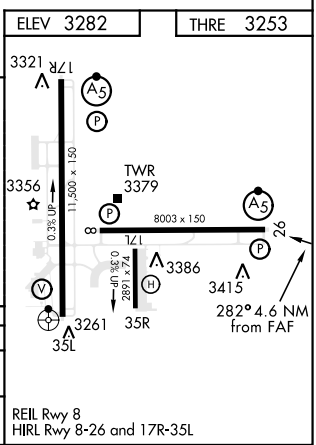
## RADAR REQUIRED

(For entry at CIRKI)

EMERG SAFE ALT 100 NM 7300



CATEGORY	C	D	E
S-26 *	3680-1¼	427	(400-1¼)
CIRCLING	3740-1½ 458 (500-1½)	3840-2 558 (600-2)	3980-2½ 698 (700-2½)



# HI-VOR/DME or TACAN RWY 26