

HI-LOC/DME BC RWY 35L

LOC I-LBB 111.7 Chan 54	APCH CRS 354°	Rwy Idg 11,500 TDZE 3254 Arprt Elev 3282
---	-------------------------	---

JAL-241 [USAF]

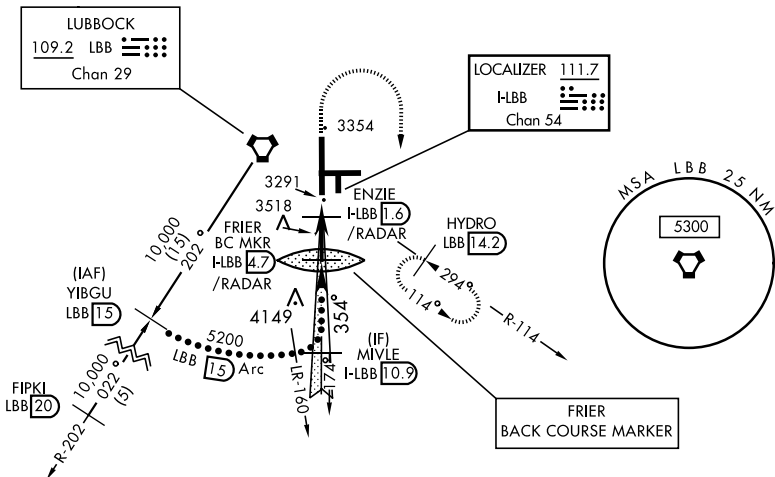
LUBBOCK PRESTON SMITH INTL (KLBB)

▼ * When ALS inop, increase all CAT vis to 7/8 mile.
▲ Use I-LBB DME when on Localizer course



MISSED APPROACH: Climb to 4000, then climbing right turn to 5200 on Hdg 170° and on LBB VORTAC R-114 to HYDRO INT/LBB 14.2 DME and hold.

ATIS 125.3	LUBBOCK APP CON 119.2 351.8	LUBBOCK TOWER 120.5 239.3	GND CON 121.9 348.6	CLNC DEL 125.8 281.55
----------------------	---------------------------------------	-------------------------------------	-------------------------------	---------------------------------

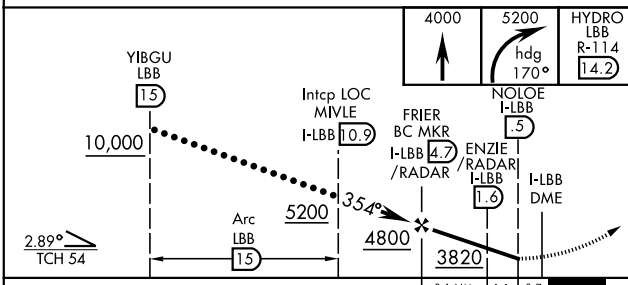


SC-2, 24 MAY 2018 to 21 JUN 2018

SC-2, 24 MAY 2018 to 21 JUN 2018

BACKCOURSE

EMERG SAFE ALT 100 NM 7300



ELEV 3282	TDZE 3254
	REIL Rwy 8 HIRL Rwy 8-26 and 17R-35L
3321 3356 3261 335L	8003 x 150 3386 3415 35R
354° 5 NM from FAF FAF to MAP 4.2 NM	354° 5 NM from FAF FAF to MAP 4.2 NM
Knots	120 150 160 180 200
Min:Sec	2:06 1:41 1:35 1:24 1:16

CATEGORY	C	D	E
S-35L *	3560-3/4	306 (300-3/4)	
CIRCLING	3880-1 1/2 598 (600-1 1/2)	3940-2 658 (700-2)	4100-3 818 (900-3)

HI-LOC/DME BC RWY 35L