

LUBBOCK, TEXAS

HI-ILS or LOC RWY 17R

LOC I-LBB 111.7 Chan 54	APCH CRS 174°	Rwy ldg 11,500 TDZE 3282 Arprt Elev 3282
---	-------------------------	---

JAL-241 [USAF]

LUBBOCK PRESTON SMITH INTL (KLBB)

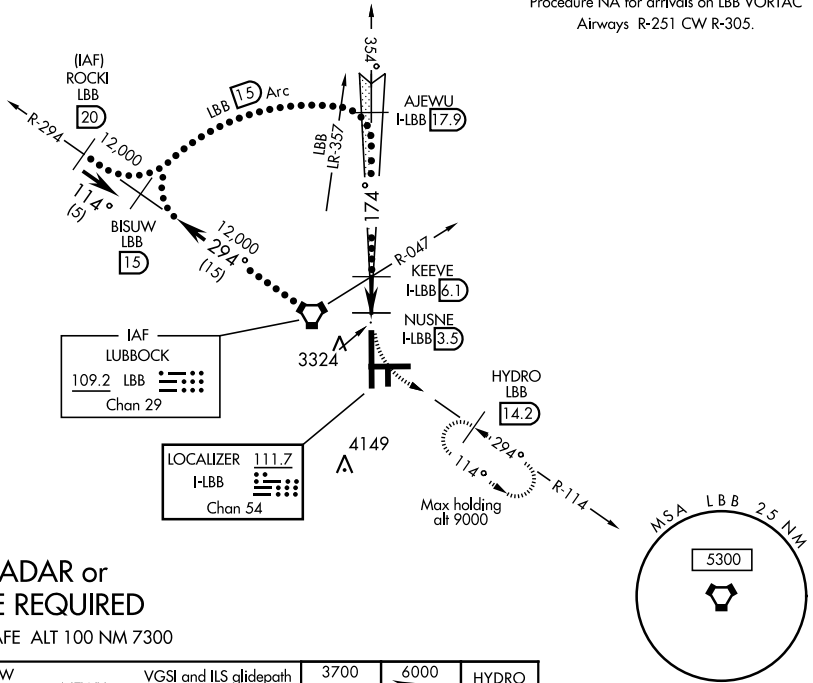
- ▼ * When ALS inop, increase CAT E RVR to 40.
- ** When ALS inop, increase CAT CDE vis to 1 3/8 mile.
- ▲ *** When ALS inop, increase CAT CDE RVR to 50.



MISSED APPROACH: Climb to 3700, then climbing left turn to 6000 via LBB VORTAC R-114 to HYDRO (LBB 14.2 DME) and hold, continue climb in hold to 6000.

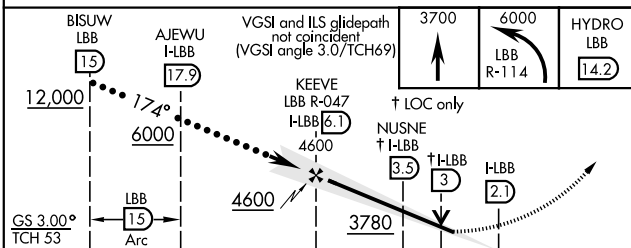
ATIS 125.3	LUBBOCK APP CON 119.2 351.8	LUBBOCK TOWER 120.5 239.3	GND CON 121.9 348.6	CLNC DEL 125.8 281.55
----------------------	---------------------------------------	-------------------------------------	-------------------------------	---------------------------------

Procedure NA for arrivals on LBB VORTAC Airways R-251 CW R-305.



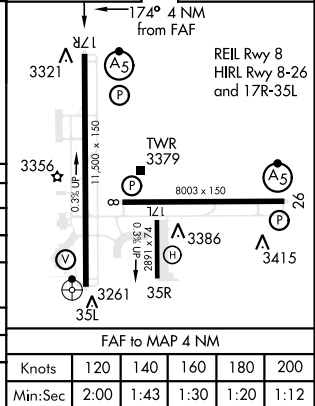
RADAR or DME REQUIRED

EMERG SAFE ALT 100 NM 7300



ELEV 3282	TDZE 3282
------------------	------------------

CATEGORY	C	D	E
S-ILS 17R *	3482/24	200 (200-1/2)	
S-LOC 17R **	3780/50	498 (500-1)	
CIRCLING	3880-1 1/2 598 (600-1 1/2)	3940-2 658 (700-2)	4100-3 818 (900-3)
	NUSNE DME FIX MINIMUMS		
S-LOC 17R ***	3620/26	338 (400-3/4)	
CIRCLING	3880-1 1/2 598 (600-1 1/2)	3940-2 658 (700-2)	4100-3 818 (900-3)



LUBBOCK, TEXAS
Amdt 2 02FEB17

33°40'N-101°49'W

LUBBOCK PRESTON SMITH INTL (KLBB)

HI-ILS or LOC RWY 17R

SC-2, 24 MAY 2018 to 21 JUN 2018

SC-2, 24 MAY 2018 to 21 JUN 2018