

# WYLSN FIVE DEPARTURE (RNAV)

ATIS  
 135.575 269.9  
 GND CON  
 121.6 275.8  
 ELLINGTON TOWER  
 126.05 253.5  
 HOUSTON DEP CON  
 134.45 284.0

**TOP ALTITUDE:  
 ASSIGNED BY ATC**

NOTE: RADAR required.  
 NOTE: DME/DME/IRU or GPS required.  
 NOTE: RNAV 1.

### TAKEOFF MINIMUMS

Rwys 4, 17L/R, 22, 35L/R: Standard with minimum climb of 500' per NM to 540.

### DEPARTURE ROUTE DESCRIPTION

TAKEOFF RWY 4: Climb on heading 039° to 540, expect RADAR vectors to WYLSN, thence. . . .

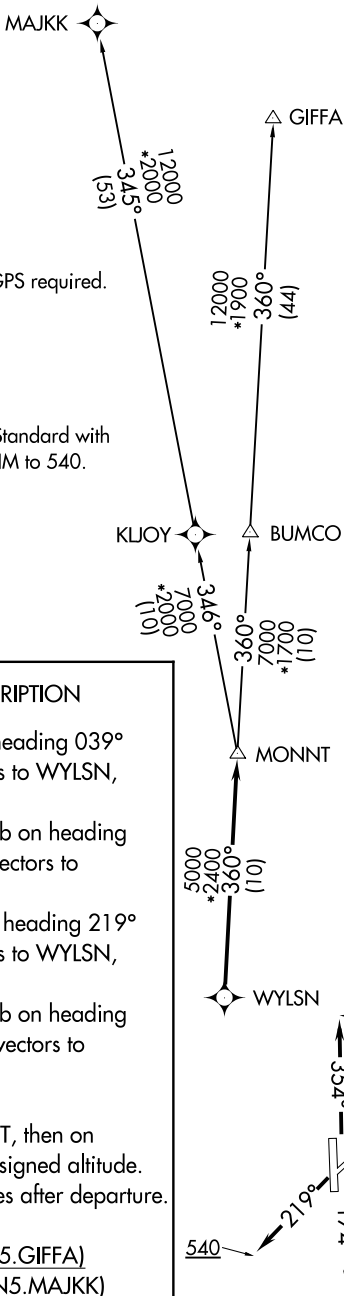
TAKEOFF RWYS 17L/R: Climb on heading 174° to 540, expect RADAR vectors to WYLSN, thence. . . .

TAKEOFF RWY 22: Climb on heading 219° to 540, expect RADAR vectors to WYLSN, thence. . . .

TAKEOFF RWYS 35L/R: Climb on heading 354° to 540, expect RADAR vectors to WYLSN, thence. . . .

. . . .on track 360° to MONNT, then on (transition). Maintain ATC assigned altitude. Expect filed altitude 10 minutes after departure.

GIFFA TRANSITION (WYLSN5.GIFFA)  
MAJJK TRANSITION (WYLSN5.MAJJK)



SC-5, 24 MAY 2018 to 21 JUN 2018

SC-5, 24 MAY 2018 to 21 JUN 2018

# WYLSN FIVE DEPARTURE (RNAV)