

# TRUAX SEVEN DEPARTURE

ATIS  
135.575 269.9  
GND CON  
121.6 275.8  
ELLINGTON TOWER  
126.05 253.5  
HOUSTON DEP CON  
134.45 284.0

**TOP ALTITUDE:  
4000**

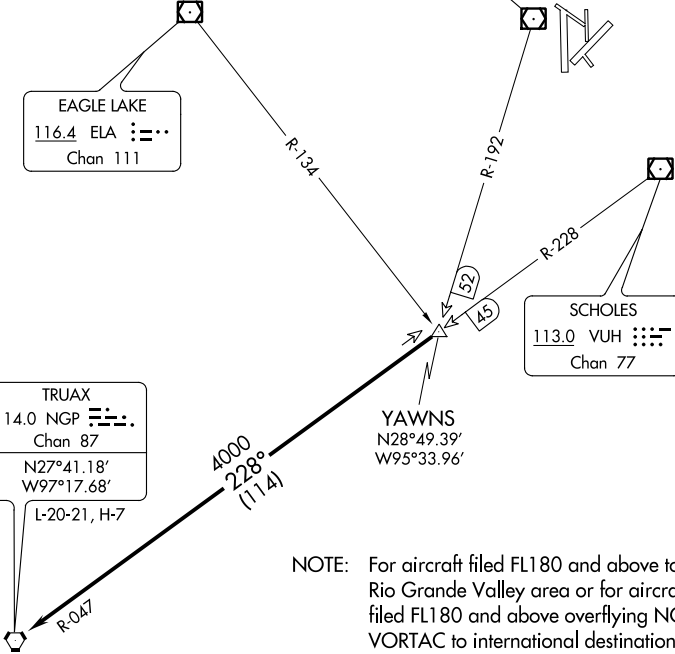
HOBBY  
117.1 HUB   
Chan 118

EAGLE LAKE  
116.4 ELA   
Chan 111

SCHOLES  
113.0 VUH   
Chan 77

TRUAX  
114.0 NGP   
Chan 87  
N27°41.18'  
W97°17.68'  
L-20-21, H-7

YAWNS  
N28°49.39'  
W95°33.96'



NOTE: For aircraft filed FL180 and above to Rio Grande Valley area or for aircraft filed FL180 and above overflying NGP VORTAC to international destinations.  
NOTE: RADAR required.

**TAKEOFF MINIMUMS**  
Rwys 4, 17L/R, 35L/R: Standard.  
Rwy 22: 200-1¼ or standard with minimum climb of 214' per NM to 300 or alternatively with standard takeoff minimums and a normal 200' per NM climb gradient, takeoff must occur no later than 1400' prior to DER.

NOTE: Chart not to scale.

## DEPARTURE ROUTE DESCRIPTION

TAKEOFF ALL RWYS: Climb on assigned heading for RADAR vectors to YAWNS INT, maintain 4000. Expect filed altitude 10 minutes after departure, thence. . . .  
. . . .on VUH R-228 and NGP R-047 to NGP VORTAC.

SC-5, 24 MAY 2018 to 21 JUN 2018

SC-5, 24 MAY 2018 to 21 JUN 2018