

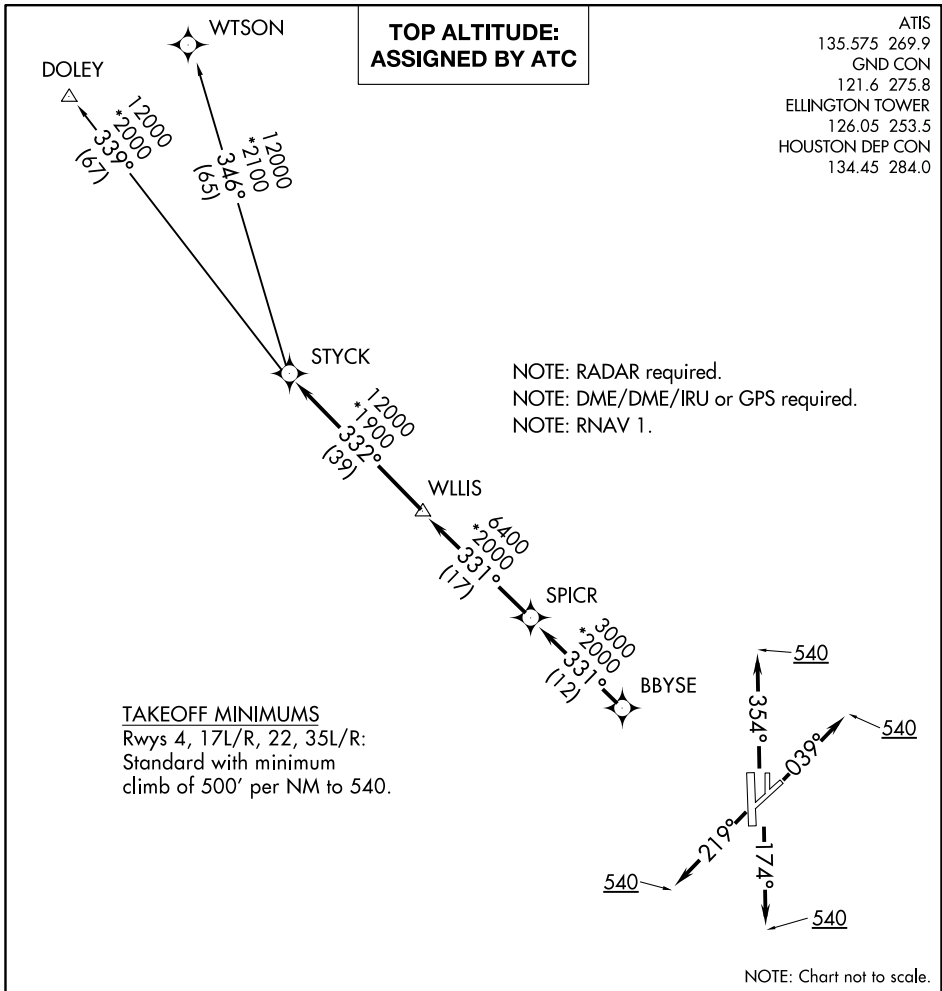
(STYCK5.STYCK) 18032

AL-197 (FAA)

ELLINGTON (EFD)

STYCK FIVE DEPARTURE (RNAV)

HOUSTON, TEXAS



SC-5, 24 MAY 2018 to 21 JUN 2018

SC-5, 24 MAY 2018 to 21 JUN 2018



DEPARTURE ROUTE DESCRIPTION

- TAKEOFF RWY 4: Climb heading 039° to 540, expect RADAR vectors to BBYSE, thence. . .
- TAKEOFF RWYS 17L/R: Climb heading 174° to 540, expect RADAR vectors to BBYSE, thence. . .
- TAKEOFF RWY 22: Climb heading 219° to 540, expect RADAR vectors to BBYSE, thence. . .
- TAKEOFF RWYS 35L/R: Climb heading 354° to 540, expect RADAR vectors to BBYSE, thence. . .

. . . on track 331° to SPICR, then on track 331° to WLLIS, then on track 332° to STYCK, then on (transition). Maintain ATC assigned altitude. Expect filed altitude 10 minutes after departure.

- DOLEY TRANSITION (STYCK5.DOLEY)
- WTSON TRANSITION (STYCK5.WTSON)

STYCK FIVE DEPARTURE (RNAV)

(STYCK5.STYCK) 22JUN17

HOUSTON, TEXAS
ELLINGTON (EFD)