

WAAS CH 61111 W22A	APP CRS 219°	Rwy Idg TDZE Apt Elev	8001 31 33
--	------------------------	-----------------------------	---------------------------------------

RNAV (GPS) RWY 22

ELLINGTON (EFD)

▼ For uncompensated Baro-VNAV systems, LNAV/VNAV NA below -15°C (5°F) or above 54°C (130°F). DME/DME RNP-0.3 NA. Circling NA west of Rwy 17R-35L.
▲ For inop MALS, increase LPV Cat E visibility to RVR 4000, LNAV/VNAV Cat E visibility to RVR 5000 and LNAV Cats C, D and E visibility to RVR 5000.

MALS

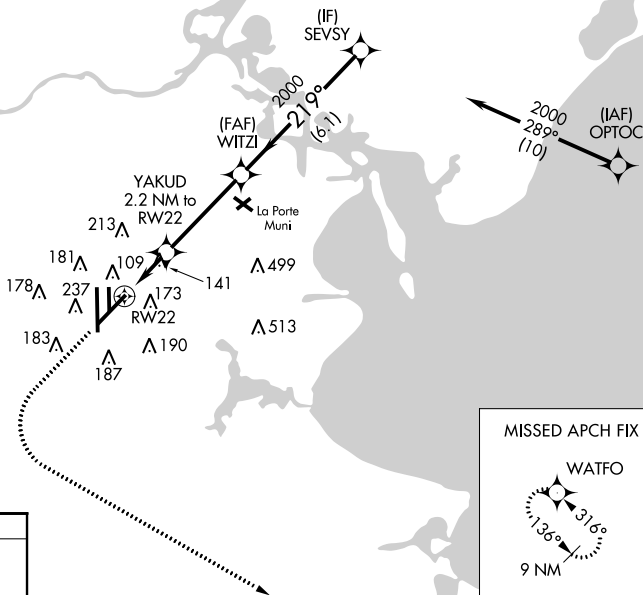
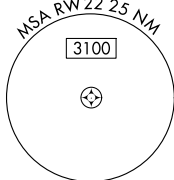


MISSED APPROACH:
 Climb to 500 then climbing left turn to 3100 direct WATFO and hold.

ATIS 135.575 269.9	HOUSTON APP CON 134.45 284.0	ELLINGTON TOWER 126.05 253.5	GND CON 121.6 275.8
------------------------------	--	--	-------------------------------

RADAR REQUIRED

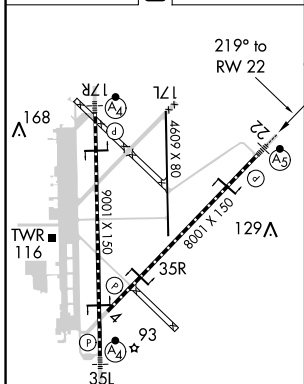
1049 1049



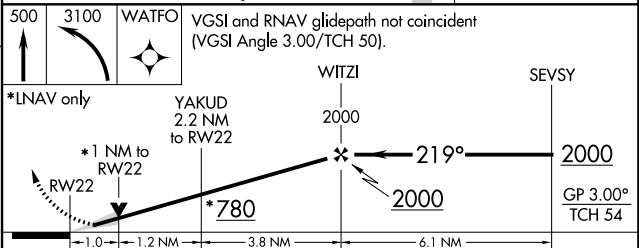
SC-5, 24 MAY 2018 to 21 JUN 2018

SC-5, 24 MAY 2018 to 21 JUN 2018

ELEV 33	D	TDZE 31
---------	----------	---------



HIRL Rwy 4-22 and 17R-35L
 TDZ/CL Rwy 17R, 22 and 35L



CATEGORY	A	B	C	D	E
LPV DA		231/18	200 (200-½)		
LNAV/VNAV DA		341/24	310 (400-½)		
LNAV MDA	400/24	369 (400-½)	400/35	369 (400-¾)	
CIRCLING	500-1	467 (500-1)	500-1½ 467 (500-1½)	600-2 567 (600-2)	660-2½ 627 (700-2½)