

WAAS CH 70625 W17A	APP CRS 174°	Rwy Idg TDZE Apt Elev	9001 32 33
--	------------------------	-----------------------------	---------------------------------------

RNAV (GPS) RWY 17R

ELLINGTON (EFD)

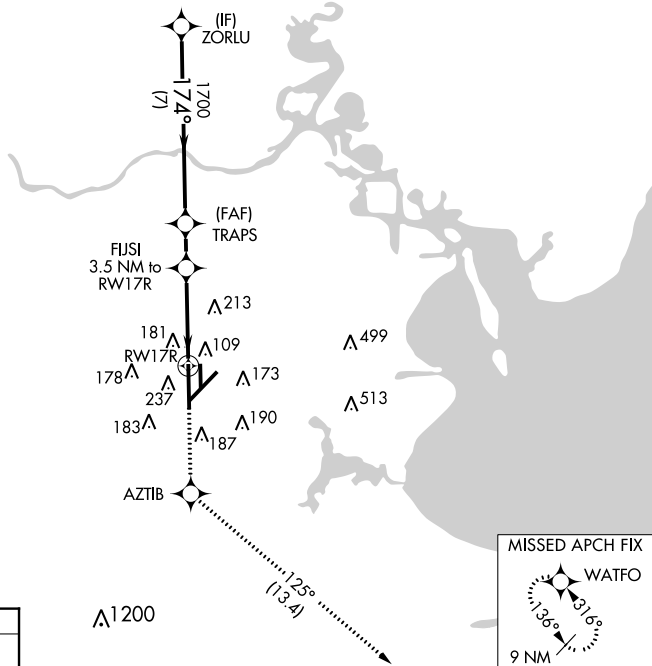
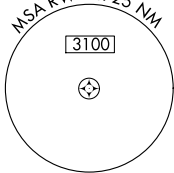
⚠ For uncompensated Baro-VNAV systems, LNAV/VNAV NA below -15°C (5°F) or above 43°C (109°F). DME/DME RNP-0.3 NA. Inop table does not apply to LPV DA. For inop MALSF, increase LNAV/VNAV all Cats and LNAV Cats A and B visibility to RVR 5500 and Cats C/D/E visibility to 1½ miles. Circling NA west of Rwy 17R-35L.



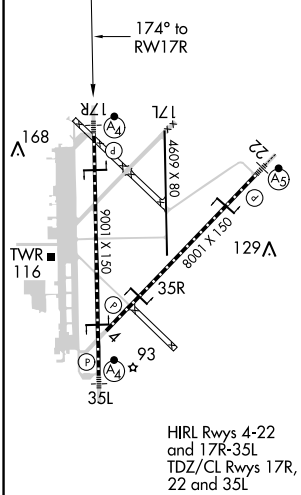
MISSED APPROACH: Climb to 3100 direct AZTIB and on track 125° to WATFO and hold.

ATIS 135.575 269.9	HOUSTON APP CON 134.45 284.0	ELLINGTON TOWER 126.05 253.5	GND CON 121.6 275.8
------------------------------	--	--	-------------------------------

RADAR REQUIRED



ELEV 33	D	TDZE 32
---------	----------	---------



VGSi and RNAV glidepath not coincident (VGSi Angle 3.00/TCH 48).		3100	AZTIB	tr 125°	WATFO
ZORLU		TRAPS	FUJI	*LNAV only	
2000		1700	3.5 NM to RWY17R	*1.4 NM to RWY17R	
GP 3.00° TCH 52		1700	*1180	7 NM, 1.6 NM, 2.2 NM, 1.4 NM	
CATEGORY	A	B	C	D	E
LPV DA	232/40		200 (200-¾)		
LNAV/VNAV DA	363/40		331 (400-¾)		
LNAV MDA	500/40	468 (500-¾)	500/60 468 (500-1¼)		
CIRCLING	500-1	467 (500-1)	500-1½ 467 (500-1½)	600-2 567 (600-2)	660-2 ¼ 627 (700-2¼)