

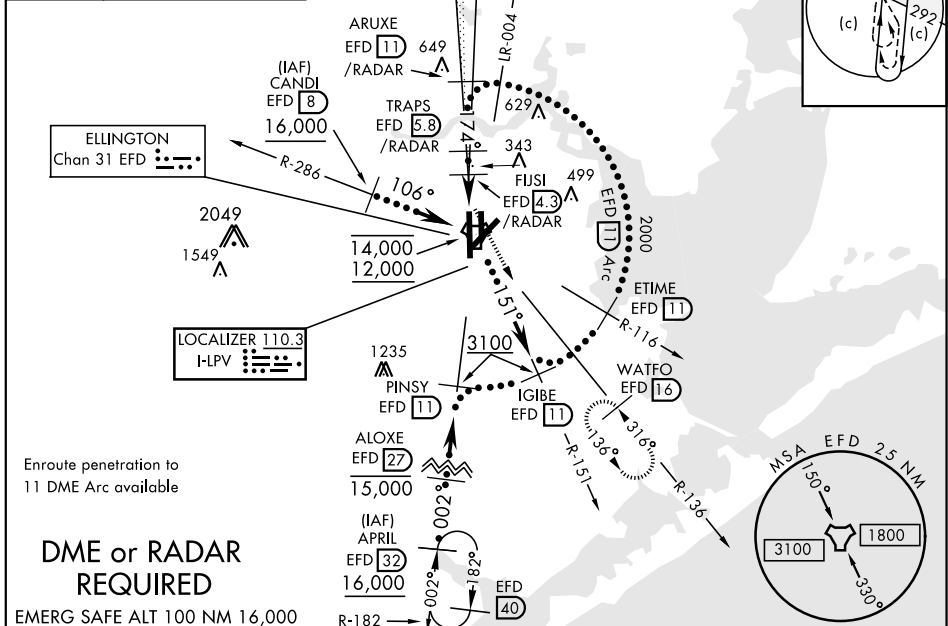
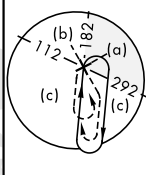
HOUSTON, TEXAS

HI-ILS or LOC/DME RWY 17R

LOC I-LPV 110.3	APCH CRS 174°	Rwy Idg THRE Arprt Elev 9001 31 33	JAL-197 [USAF]	HOUSTON/ELLINGTON (KEFD)
▼ * When ALS inop, increase CAT CDE RVR to 60 and vis to 1 1/4 miles. ** Circling not authorized W of Rwy 17R-35L.			MALSF A4	MISSED APPROACH: Climb to 700 then climbing left turn to 3100 on EFD R-136 to WATFO/EFD 16 DME and hold.

ATIS 135.575 269.9	HOUSTON APP CON 134.45 284.0	ELLINGTON TOWER 126.05 253.5	GND CON 121.6 275.8
------------------------------	--	--	-------------------------------

EFD TACAN N29°36.36' W95°09.58'	
CANDI N29°39.24' W95°18.17'	
APRIL N29°04.53' W95°14.05'	
WATFO N29°23.90' W94°58.07'	

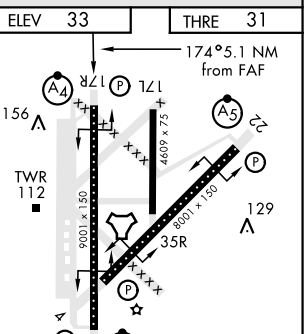
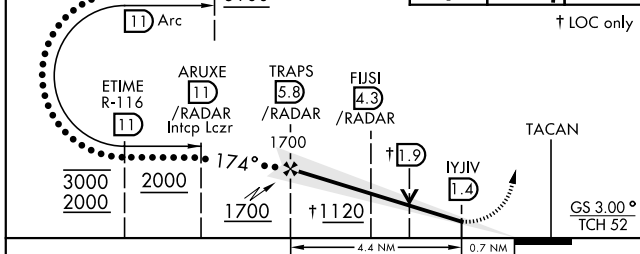


Enroute penetration to 11 DME Arc available

DME or RADAR REQUIRED

EMERG SAFE ALT 100 NM 16,000

IGIBE R-151 (11)	VGSI and ILS GP not coincident	700	3100	WATFO EFD (16)	ELEV 33	THRE 31
				† LOC only	174° 5.1 NM from FAF	



CATEGORY	C	D	E
S-ILS 17R	231/40	200	(200-3/4)
S-LOC 17R*	440/50	409	(500-1)
CIRCLING**	500-1 1/2 467 (500-1 1/2)	600-2 567 (600-2)	660-2 1/4 627 (700-2 1/4)

HIRL Rwy 4-22 and 17R-35L
TDZL/CL Rwy 17R, 22 and 35L

HOUSTON, TEXAS 29° 37' N-95° 10' W HOUSTON/ELLINGTON (KEFD)

Amdt 4A 06FEB14

HI-ILS or LOC/DME RWY 17R

SC-5, 24 MAY 2018 to 21 JUN 2018

SC-5, 24 MAY 2018 to 21 JUN 2018