

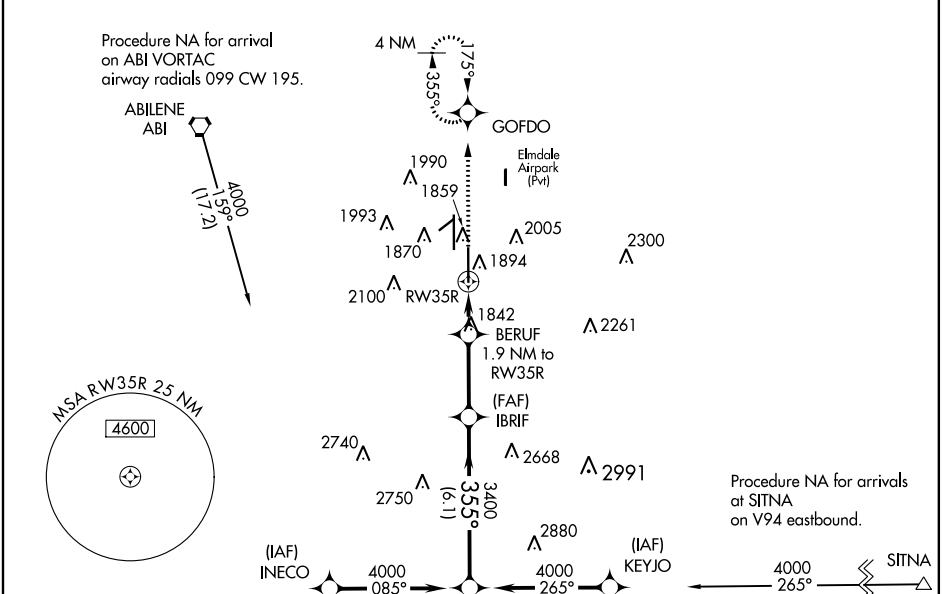
WAAS CH 97517 W35A	APP CRS 355°	Rwy Idg TDZE Apt Elev	7198 1776 1791
--	------------------------	-----------------------------	---

RNAV (GPS) RWY 35R

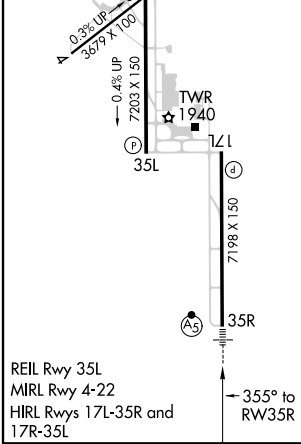
ABILENE RGNL (ABI)

<p>⚠ For uncompensated Baro-VNAV systems, LNAV/VNAV NA below -18°C (0°F) or above 45°C (113°F). DME/DME RNP-0.3 NA. For inop ALS, increase LPV Cat E visibility to RVR 4000, increase LNAV/VNAV and LNAV Cat E visibility ½ SM. ** RVR 1800 authorized with use of FD or AP or HUD to DA.</p>	<p>MALSRS </p>	<p>MISSED APPROACH: Climb to 4000 direct GOFDO and hold, continue climb-in-hold to 4000.</p>
		<p>ASR</p>

<p>ATIS 118.25</p>	<p>ABILENE APP CON 125.0 338.3 (EAST) 127.2 282.3 (WEST)</p>	<p>ABILENE TOWER 120.1 257.8</p>	<p>GND CON 121.7 348.6</p>
-------------------------------	--	---	---------------------------------------



ELEV 1791	D	TDZE 1776
-----------	----------	-----------



4000	GOFDO	IBRIF	NILSE		
*LNAV only.		BERUF 1.9 NM to RW35R	4000		
*1.3 NM to RW35R		*2440	GP 3.00° TCH 58		
-1.3 NM X 0.6		3 NM	6.1 NM		
CATEGORY	A	B	C	D	E
LPV DA**	1976/24 200 (200-½)				
LNAV/VNAV DA	2189/50 413 (400-1)				
LNAV MDA	2260/24 484 (500-½)		2260/50 484 (500-1)		
C CIRCLING	2300-1 509 (600-1)	2320-1 529 (600-1)	2420-1¾ 629 (700-1¾)	2460-2 669 (700-2)	2620-3 829 (900-3)

SC-2, 24 MAY 2018 to 21 JUN 2018

SC-2, 24 MAY 2018 to 21 JUN 2018