

WAAS CH 50317 W17A	APP CRS 175°	Rwy ldg TDZE Apt Elev	7198 1791 1791
--	------------------------	-----------------------------	---

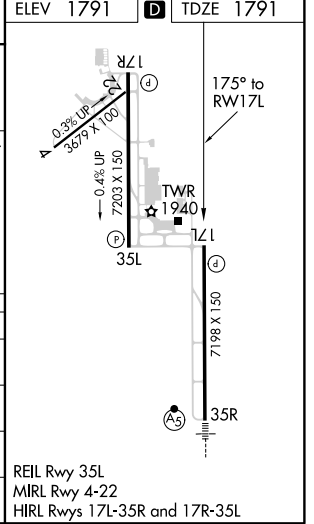
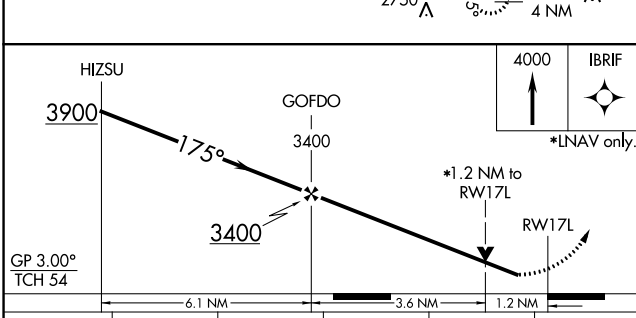
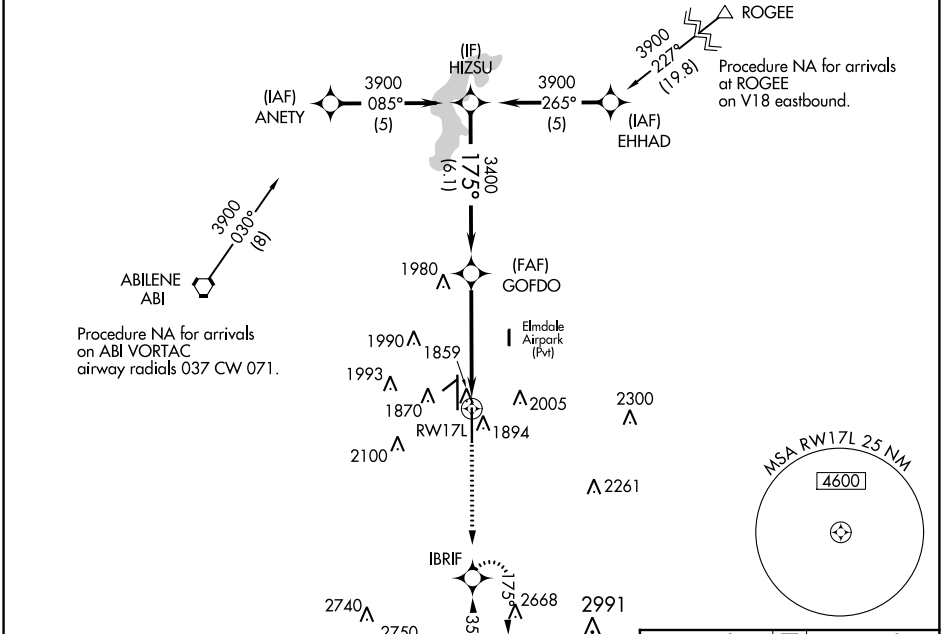
RNAV (GPS) RWY 17L

ABILENE RGNL (ABI)

⚠ For uncompensated Baro-VNAV systems, LNAV/VNAV NA below -18°C (0°F) or above 45°C (113°F). DME/DME RNP-0.3 NA.
⚠ ASR Rwy 17L helicopter visibility reduction below 3/4 SM NA.

MISSED APPROACH: Climb to 4000 direct IBRIF and hold, continue climb-in-hold to 4000.

ATIS 118.25	ABILENE APP CON 125.0 338.3 (EAST) 127.2 282.3 (WEST)	ABILENE TOWER 120.1 257.8	GND CON 121.7 348.6
-----------------------	---	-------------------------------------	-------------------------------



CATEGORY	A	B	C	D	E
LPV DA	2041-3/4		250 (300-3/4)		
LNAV/VNAV DA	2171-1 1/4		380 (400-1 1/4)		
LNAV MDA	2240-1 449 (500-1)		2240-1 3/8 449 (500-1 3/8)		
C CIRCLING	2300-1 509 (600-1)	2320-1 529 (600-1)	2420-1 3/4 629 (700-1 3/4)	2460-2 669 (700-2)	2620-3 829 (900-3)

SC-2, 24 MAY 2018 to 21 JUN 2018

SC-2, 24 MAY 2018 to 21 JUN 2018