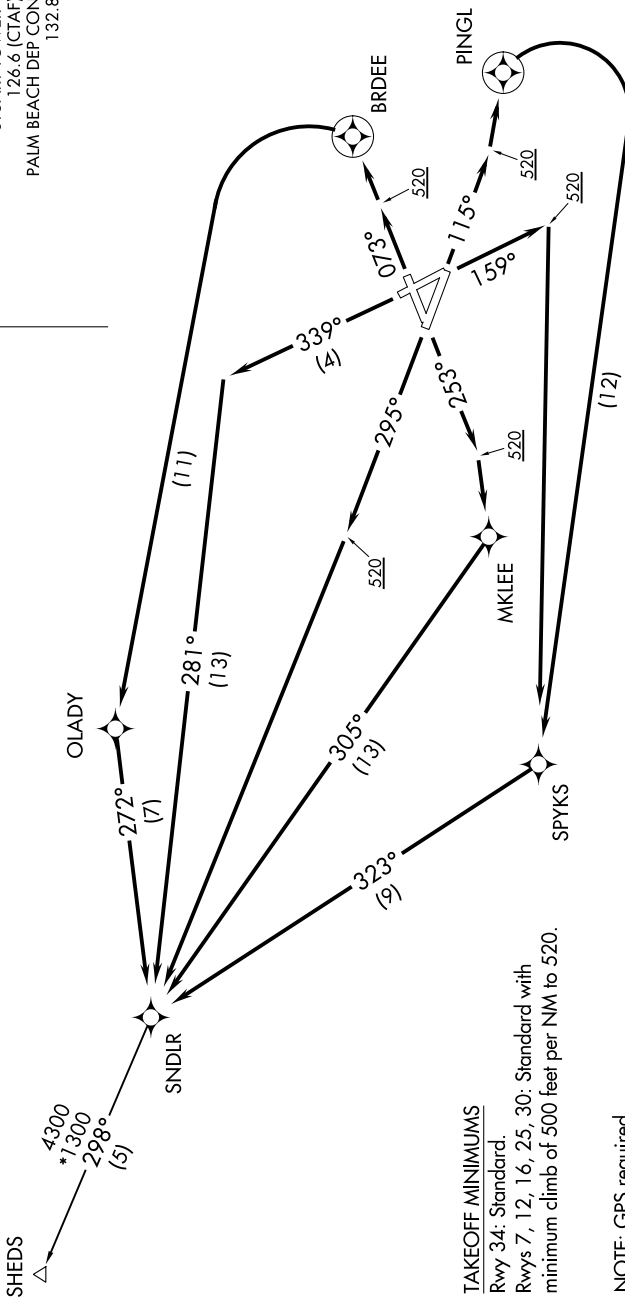


SNDLR TWO DEPARTURE (RNAV)

ATIS
134.475
GND CON
121.7
STUART TOWER*
126.6 (CTAF)
PALM BEACH DEP CON
132.8



**TOP ALTITUDE:
3000**



TAKEOFF MINIMUMS

Rwy 34: Standard.
Rwys 7, 12, 16, 25, 30: Standard with
minimum climb of 500 feet per NM to 520.

- NOTE: GPS required.
- NOTE: RADAR required.
- NOTE: RNAV 1.
- NOTE: For turbojet/turbo-prop aircraft only.
- NOTE: Transponder code will be issued via SUA ground control or PBI APP CON when tower closed.

(NARRATIVE CONTINUED ON FOLLOWING PAGE)

NOTE: Chart not to scale.

SE-3, 26 APR 2018 to 24 MAY 2018

SE-3, 26 APR 2018 to 24 MAY 2018

SNDLR TWO DEPARTURE (RNAV)